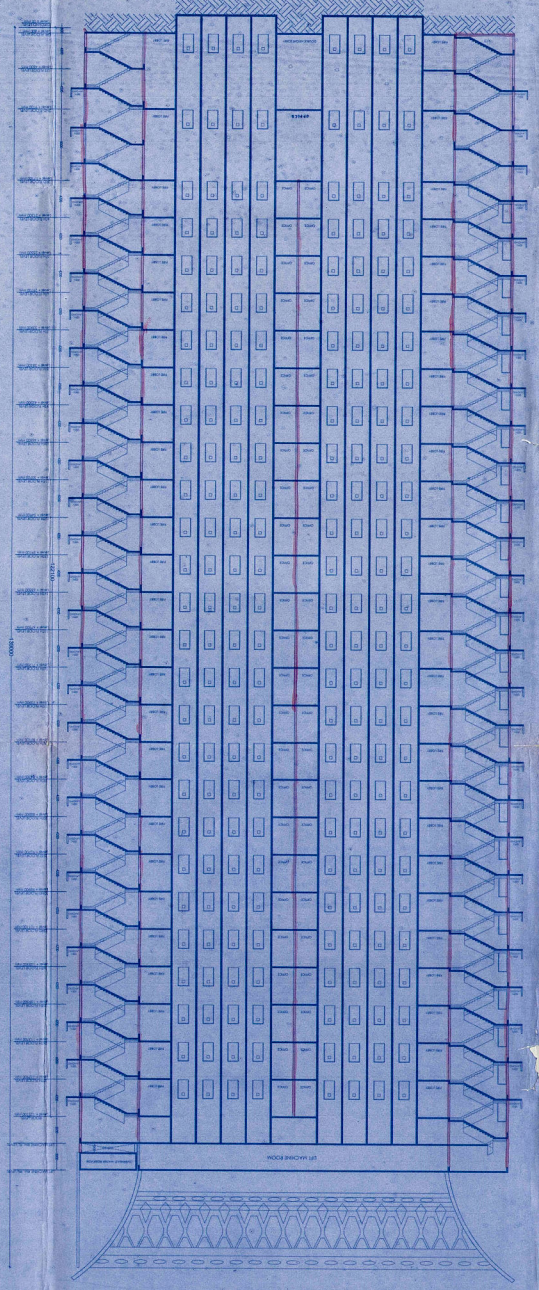
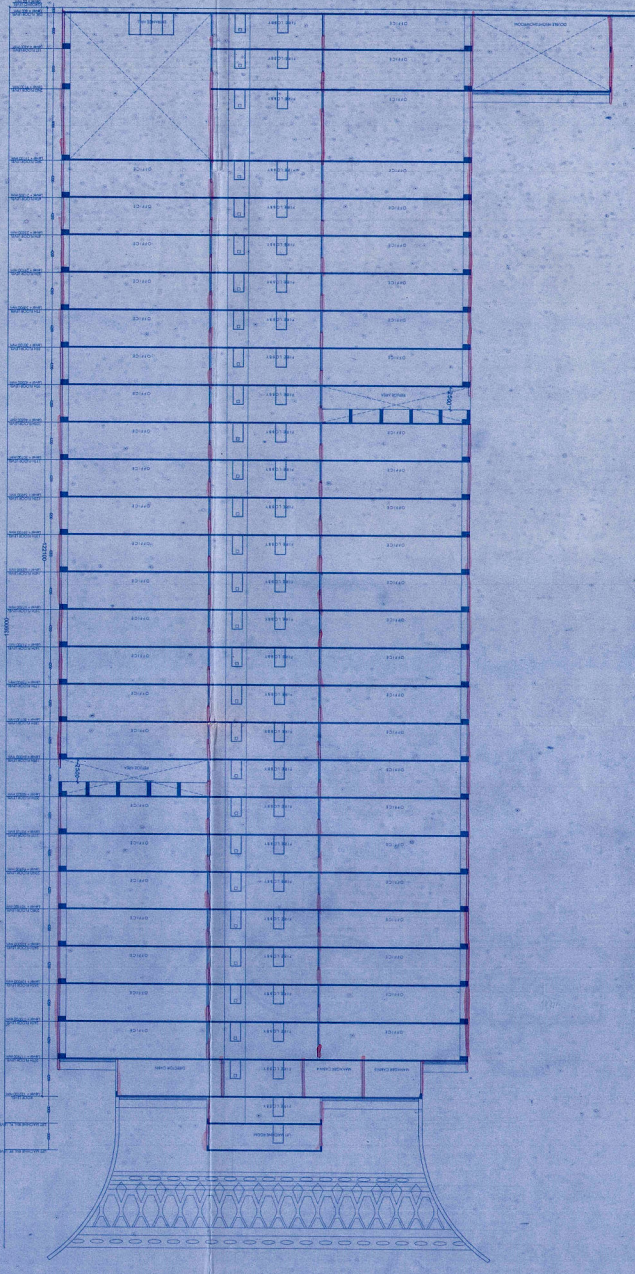




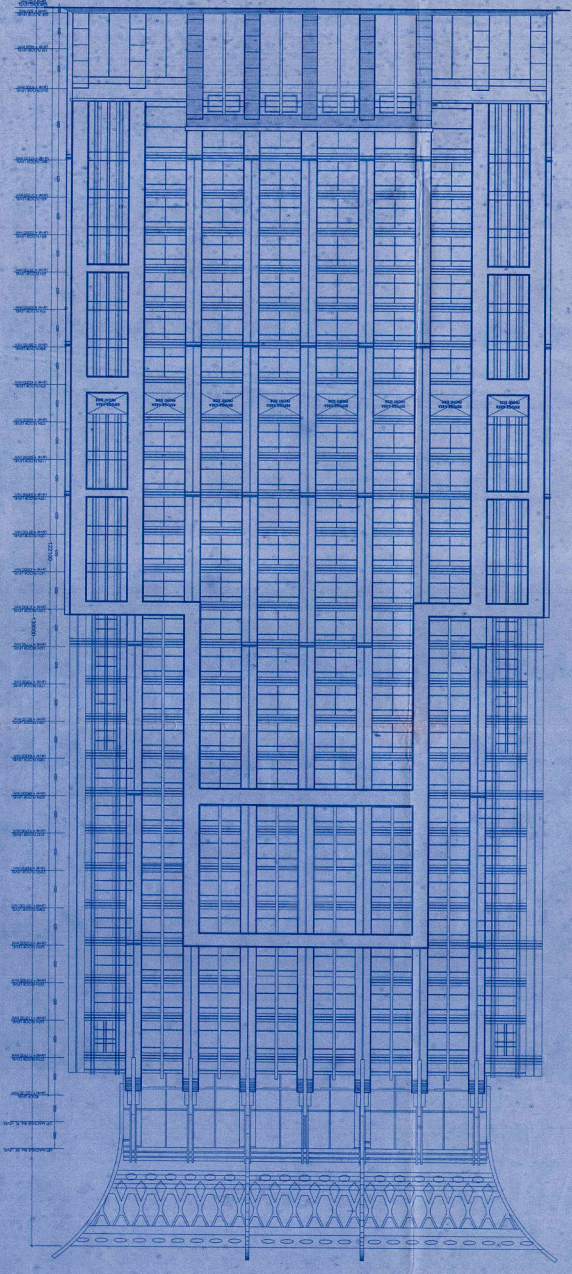
SECTION-AA
SCALE-1:200



SECTION-BB
SCALE-1:200



FRONT ELEVATION
SCALE-1:200



PROJECT: PLAN PROPOSAL OF 6-7 STORED COMMERCIAL BUILDING AT KOLKATA - 700 046		JOB NO.: 670	
SECTION-AA, SECTION-BB & DRG. NO. CA/KM/C/06		DATE: 06.07.2011	
SCALE: 1:200		DEALT BY: Mourinjo	
CHECKED BY:		DATE:	
DESIGNER: SANNON SEN & ASSOCIATES (P) LTD. ARCHITECTS, ENGINEERS & INTERIORS DESIGNERS 5, RUSSELL STREET, KOLKATA-700 071 PHONE: 91-33-22645179, 22172505, 22254402 FAX: 2228 8911 EMAIL: sannon@skva.com		CLIENT: SANNON SEN & ASSOCIATES (P) LTD. ARCHITECTS, ENGINEERS & INTERIORS DESIGNERS 5, RUSSELL STREET, KOLKATA-700 071 PHONE: 91-33-22645179, 22172505, 22254402 FAX: 2228 8911 EMAIL: sannon@skva.com	
PROF.: S. S. Srinivasan		SCALE: 1:200	
DATE: 06.07.2011		CHECKED BY: Mourinjo	
DESIGNER: SANNON SEN & ASSOCIATES (P) LTD. ARCHITECTS, ENGINEERS & INTERIORS DESIGNERS 5, RUSSELL STREET, KOLKATA-700 071 PHONE: 91-33-22645179, 22172505, 22254402 FAX: 2228 8911 EMAIL: sannon@skva.com		CLIENT: SANNON SEN & ASSOCIATES (P) LTD. ARCHITECTS, ENGINEERS & INTERIORS DESIGNERS 5, RUSSELL STREET, KOLKATA-700 071 PHONE: 91-33-22645179, 22172505, 22254402 FAX: 2228 8911 EMAIL: sannon@skva.com	