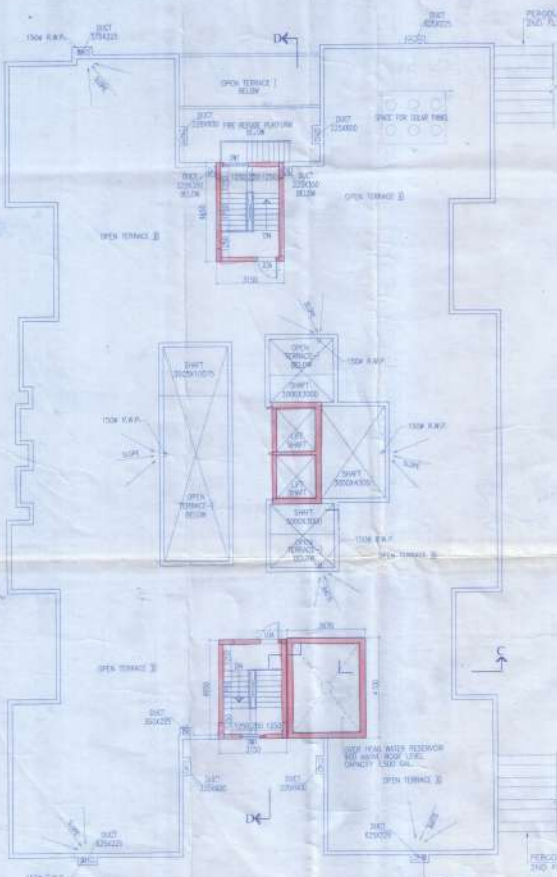


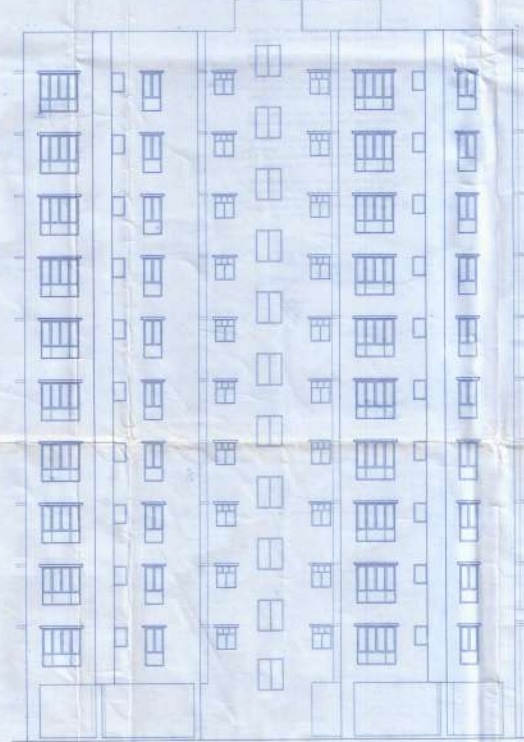


SCHEDULE OF DOORS & WINDOWS

NO.	REL.	LA/TLE	SIZE
DW1	2150	1800 X 2150	
DW2	2150	1800 X 2150	
DW3	2150	1800 X 2150	
DW4	2150	1800 X 2150	
DW5	2150	1800 X 2150	
DW6	2150	1800 X 2150	
DW7	2150	1800 X 2150	
DW8	2150	1800 X 2150	
DW9	2150	1800 X 2150	
DW10	2150	1800 X 2150	
DW11	2150	1800 X 2150	
DW12	2150	1800 X 2150	
DW13	2150	1800 X 2150	
DW14	2150	1800 X 2150	
DW15	2150	1800 X 2150	
DW16	2150	1800 X 2150	
DW17	2150	1800 X 2150	
DW18	2150	1800 X 2150	
DW19	2150	1800 X 2150	
DW20	2150	1800 X 2150	
DW21	2150	1800 X 2150	
DW22	2150	1800 X 2150	
DW23	2150	1800 X 2150	
DW24	2150	1800 X 2150	
DW25	2150	1800 X 2150	
DW26	2150	1800 X 2150	
DW27	2150	1800 X 2150	
DW28	2150	1800 X 2150	
DW29	2150	1800 X 2150	
DW30	2150	1800 X 2150	
DW31	2150	1800 X 2150	
DW32	2150	1800 X 2150	
DW33	2150	1800 X 2150	
DW34	2150	1800 X 2150	
DW35	2150	1800 X 2150	
DW36	2150	1800 X 2150	
DW37	2150	1800 X 2150	
DW38	2150	1800 X 2150	
DW39	2150	1800 X 2150	
DW40	2150	1800 X 2150	
DW41	2150	1800 X 2150	
DW42	2150	1800 X 2150	
DW43	2150	1800 X 2150	
DW44	2150	1800 X 2150	
DW45	2150	1800 X 2150	
DW46	2150	1800 X 2150	
DW47	2150	1800 X 2150	
DW48	2150	1800 X 2150	
DW49	2150	1800 X 2150	
DW50	2150	1800 X 2150	
DW51	2150	1800 X 2150	
DW52	2150	1800 X 2150	
DW53	2150	1800 X 2150	
DW54	2150	1800 X 2150	
DW55	2150	1800 X 2150	
DW56	2150	1800 X 2150	
DW57	2150	1800 X 2150	
DW58	2150	1800 X 2150	
DW59	2150	1800 X 2150	
DW60	2150	1800 X 2150	
DW61	2150	1800 X 2150	
DW62	2150	1800 X 2150	
DW63	2150	1800 X 2150	
DW64	2150	1800 X 2150	
DW65	2150	1800 X 2150	
DW66	2150	1800 X 2150	
DW67	2150	1800 X 2150	
DW68	2150	1800 X 2150	
DW69	2150	1800 X 2150	
DW70	2150	1800 X 2150	
DW71	2150	1800 X 2150	
DW72	2150	1800 X 2150	
DW73	2150	1800 X 2150	
DW74	2150	1800 X 2150	
DW75	2150	1800 X 2150	
DW76	2150	1800 X 2150	
DW77	2150	1800 X 2150	
DW78	2150	1800 X 2150	
DW79	2150	1800 X 2150	
DW80	2150	1800 X 2150	
DW81	2150	1800 X 2150	
DW82	2150	1800 X 2150	
DW83	2150	1800 X 2150	
DW84	2150	1800 X 2150	
DW85	2150	1800 X 2150	
DW86	2150	1800 X 2150	
DW87	2150	1800 X 2150	
DW88	2150	1800 X 2150	
DW89	2150	1800 X 2150	
DW90	2150	1800 X 2150	
DW91	2150	1800 X 2150	
DW92	2150	1800 X 2150	
DW93	2150	1800 X 2150	
DW94	2150	1800 X 2150	
DW95	2150	1800 X 2150	
DW96	2150	1800 X 2150	
DW97	2150	1800 X 2150	
DW98	2150	1800 X 2150	
DW99	2150	1800 X 2150	
DW100	2150	1800 X 2150	



ROOF PLAN



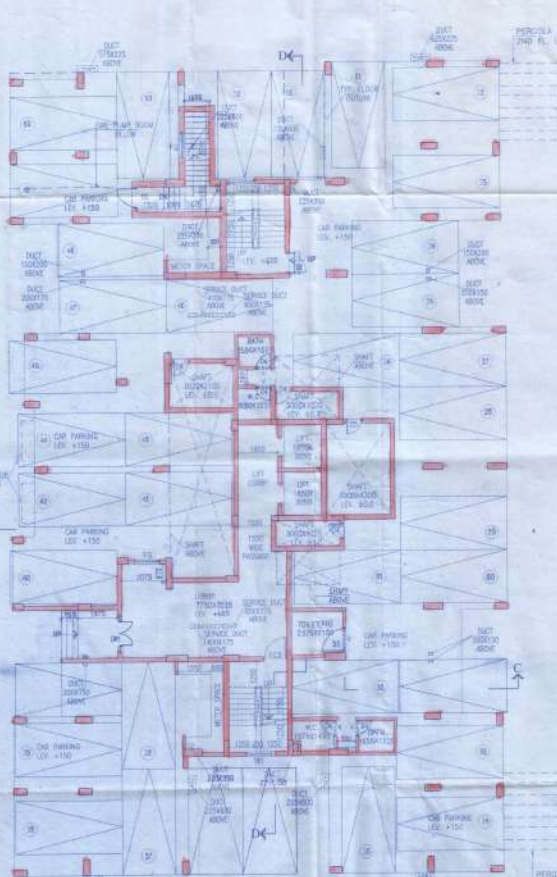
FRONT ELEVATION

DISPLAY WINDOW PVT. LTD.

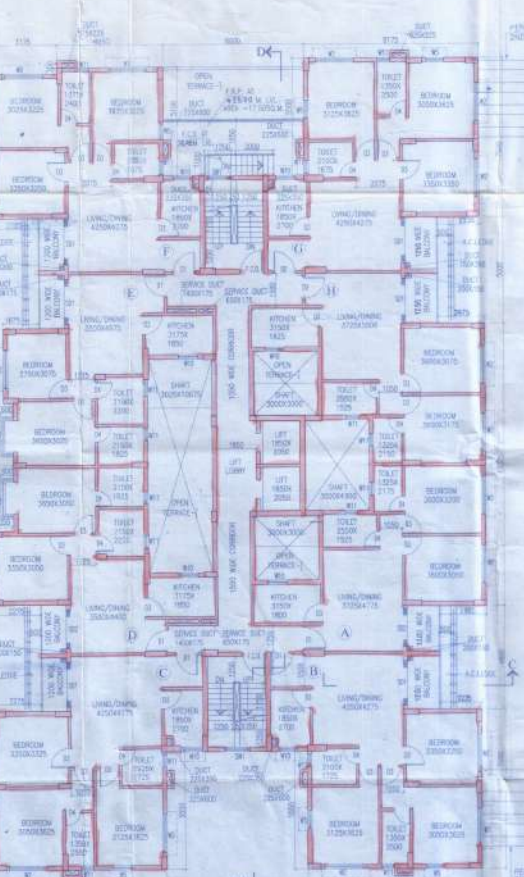
DESIGNER / AUTHORIZED SIGNATURE

CERTIFICATE OF OWNER

CERTIFIED THAT I HAVE GONE THROUGH THE BUILDING RULES FOR RAJAHMATH GOLAPUR MUNICIPALITY AND ALSO UNDER TAKE TO ABIDE BY THOSE RULES DURING AND AFTER CONSTRUCTION OF THE BUILDING



GROUND FLOOR PLAN



TYPICAL FLOOR PLAN (1ST TO 10TH FLOOR)

DISPLAY WINDOW PVT. LTD.

DESIGNER / AUTHORIZED SIGNATURE

SIGNATURE OF OWNER

CERTIFICATE OF STRUCTURAL STABILITY
WE HEREBY CERTIFIED THAT THE FOUNDATION AND THE SUPERSTRUCTURE OF THE BUILDING PROPOSED FOR CONSTRUCTION ON R.S.L.R. (DAG NO. 444 444 882 448 448 447 P. 448 P. 447) 407 TO 488, 508 TO 511, 518, 527 TO 551, 551 - 865, 582 TO 584, 598 - 884, 886, 707 TO 711 & 720 TO 724, CONTAINED IN L.R. KHATHAN NO. 1427 TO 1489, 1593 TO 1622, 1615 TO 1618, 1627 TO 1843, 1845 TO 1848, 1982, 1985, 1989 TO 1995 & 1997 TO 2004, 2204 TO 2206, 2211, 2212 & 2214 TO 2218 P.S. - BANGALATI, DIST. - RAJAHMATH AT MOUKA, ATCHAHARA J.L. NO. 10, HAVE BEEN SO DESIGNED BY US WILL MAKE SUCH FOUNDATION & SUPER STRUCTURE SAFE IN ALL RESPECTS INCLUDING THE CONSIDERATION OF BEARING CAPACITY OF SOIL E.T.C.

Signature of S. J. BARAK

J. J. PRADEEP ENGINEERING
B. ARCH., A.I.A.
REG. NO. 123456
PROJECT NO. 1234
SIGN OF ARCHITECT

CERTIFICATE OF LAND

I HAVE PERSONALLY VISITED THE SITE AND FOUND IT IS BUILDABLE AND TO BE REGULATED BY R.O.P. & P.L.D. OF P.A.D.

Signature of J. J. PRADEEP ENGINEERING

PROPOSED ADDITIONAL ONE FLOOR ON SANCTIONED (B-G-VII) STORED RESIDENTIAL BUILDING BLOCK NO. 18-B IN ALONG WITH TWO FLOORS ON SANCTIONED (B-G-VIII) STORED RESIDENTIAL BUILDING OF BLOCK NO. 18-A, 18-B, 18-C, 18-D, 18-E, 18-F, 18-G & 18-H STORED BLOCK VEEE SANCTIONED BY N.O. 1984-18 DATED 18.06.2018, AT R.S. DAG NO. 444 444 882 448 448 447 P. 448 P. 447, 407 TO 488, 508 TO 511, 518, 527 TO 551, 551 - 865, 582 TO 584, 598 - 884, 886, 707 TO 711 & 720 TO 724, L.R. KHATHAN NO. 1427 TO 1489, 1593 TO 1622, 1615 TO 1618, 1627 TO 1843, 1845 TO 1848, 1982, 1985, 1989 TO 1995 & 1997 TO 2004, 2204 TO 2206, 2211, 2212 & 2214 TO 2218 P.S. - BANGALATI, DIST. - RAJAHMATH AT MOUKA, ATCHAHARA J.L. NO. 10, AT MOUKA, ATCHAHARA P.S. - BANGALATI, DIST. - NORTH 24 PARGANAS IN WARD NO. - 12 (NEW) 9 COLONY UNDER BICHAMMANGAL MUNICIPAL CORPORATION, ARCH-1812

AGRAWAL & AGRAWAL
BARODA
KOLKATA

SCALE: 1/8" = 1'-0" (VERT. 1/4" = 1'-0")
DATE: 18.06.2018