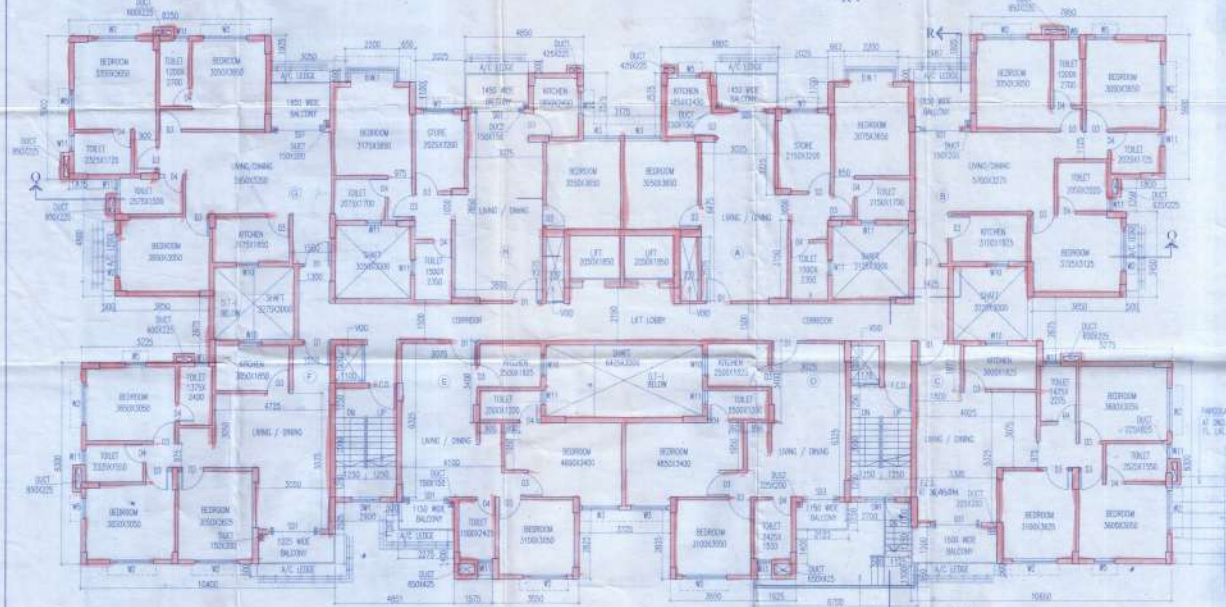
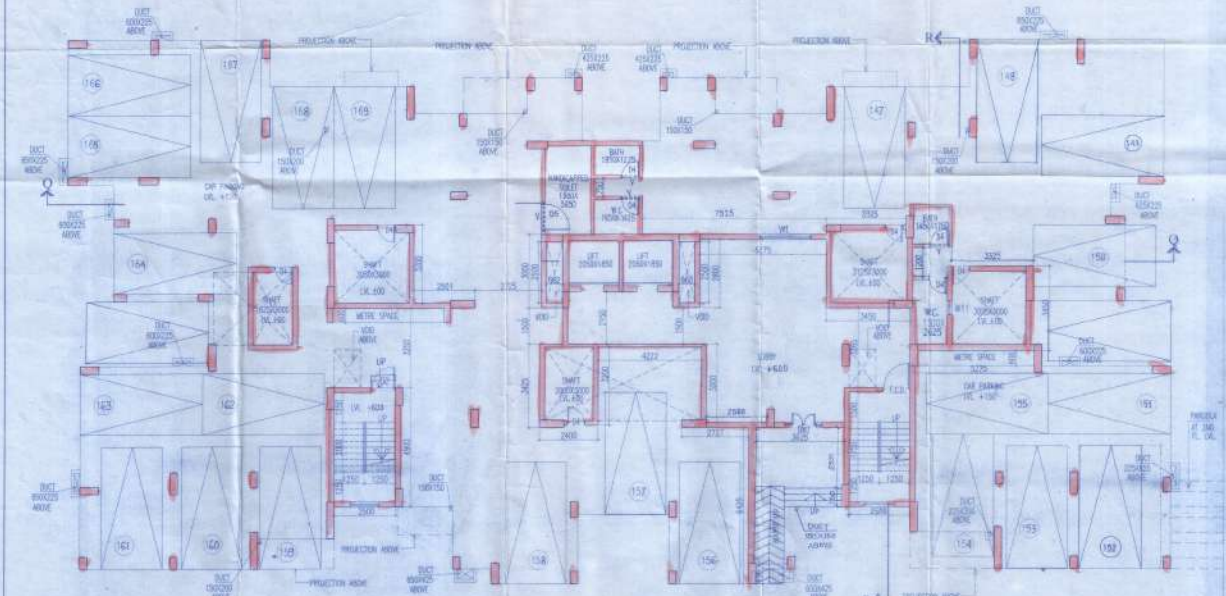


SCHEDULE OF DOORS & WINDOWS

| NO. | SIZE | TYPE | QTY |
|-------|------|-----------|-----|
| DW1 | 2150 | 1000X2150 | 2 |
| DW2 | 2150 | 2000X2150 | 2 |
| DW3 | 2150 | 1700X2150 | 2 |
| DW4 | 2150 | 2400X2150 | 2 |
| DW5 | 2150 | 2700X2150 | 2 |
| DW6 | 2150 | 3000X2150 | 2 |
| DW7 | 2150 | 1800X2150 | 2 |
| DW8 | 2150 | 1500X2150 | 2 |
| DW9 | 2150 | 1000X2150 | 2 |
| DW10 | 2150 | 1000X2150 | 2 |
| DW11 | 2150 | 1000X2150 | 2 |
| DW12 | 2150 | 1000X2150 | 2 |
| DW13 | 2150 | 1000X2150 | 2 |
| DW14 | 2150 | 1000X2150 | 2 |
| DW15 | 2150 | 1000X2150 | 2 |
| DW16 | 2150 | 1000X2150 | 2 |
| DW17 | 2150 | 1000X2150 | 2 |
| DW18 | 2150 | 1000X2150 | 2 |
| DW19 | 2150 | 1000X2150 | 2 |
| DW20 | 2150 | 1000X2150 | 2 |
| DW21 | 2150 | 1000X2150 | 2 |
| DW22 | 2150 | 1000X2150 | 2 |
| DW23 | 2150 | 1000X2150 | 2 |
| DW24 | 2150 | 1000X2150 | 2 |
| DW25 | 2150 | 1000X2150 | 2 |
| DW26 | 2150 | 1000X2150 | 2 |
| DW27 | 2150 | 1000X2150 | 2 |
| DW28 | 2150 | 1000X2150 | 2 |
| DW29 | 2150 | 1000X2150 | 2 |
| DW30 | 2150 | 1000X2150 | 2 |
| DW31 | 2150 | 1000X2150 | 2 |
| DW32 | 2150 | 1000X2150 | 2 |
| DW33 | 2150 | 1000X2150 | 2 |
| DW34 | 2150 | 1000X2150 | 2 |
| DW35 | 2150 | 1000X2150 | 2 |
| DW36 | 2150 | 1000X2150 | 2 |
| DW37 | 2150 | 1000X2150 | 2 |
| DW38 | 2150 | 1000X2150 | 2 |
| DW39 | 2150 | 1000X2150 | 2 |
| DW40 | 2150 | 1000X2150 | 2 |
| DW41 | 2150 | 1000X2150 | 2 |
| DW42 | 2150 | 1000X2150 | 2 |
| DW43 | 2150 | 1000X2150 | 2 |
| DW44 | 2150 | 1000X2150 | 2 |
| DW45 | 2150 | 1000X2150 | 2 |
| DW46 | 2150 | 1000X2150 | 2 |
| DW47 | 2150 | 1000X2150 | 2 |
| DW48 | 2150 | 1000X2150 | 2 |
| DW49 | 2150 | 1000X2150 | 2 |
| DW50 | 2150 | 1000X2150 | 2 |
| DW51 | 2150 | 1000X2150 | 2 |
| DW52 | 2150 | 1000X2150 | 2 |
| DW53 | 2150 | 1000X2150 | 2 |
| DW54 | 2150 | 1000X2150 | 2 |
| DW55 | 2150 | 1000X2150 | 2 |
| DW56 | 2150 | 1000X2150 | 2 |
| DW57 | 2150 | 1000X2150 | 2 |
| DW58 | 2150 | 1000X2150 | 2 |
| DW59 | 2150 | 1000X2150 | 2 |
| DW60 | 2150 | 1000X2150 | 2 |
| DW61 | 2150 | 1000X2150 | 2 |
| DW62 | 2150 | 1000X2150 | 2 |
| DW63 | 2150 | 1000X2150 | 2 |
| DW64 | 2150 | 1000X2150 | 2 |
| DW65 | 2150 | 1000X2150 | 2 |
| DW66 | 2150 | 1000X2150 | 2 |
| DW67 | 2150 | 1000X2150 | 2 |
| DW68 | 2150 | 1000X2150 | 2 |
| DW69 | 2150 | 1000X2150 | 2 |
| DW70 | 2150 | 1000X2150 | 2 |
| DW71 | 2150 | 1000X2150 | 2 |
| DW72 | 2150 | 1000X2150 | 2 |
| DW73 | 2150 | 1000X2150 | 2 |
| DW74 | 2150 | 1000X2150 | 2 |
| DW75 | 2150 | 1000X2150 | 2 |
| DW76 | 2150 | 1000X2150 | 2 |
| DW77 | 2150 | 1000X2150 | 2 |
| DW78 | 2150 | 1000X2150 | 2 |
| DW79 | 2150 | 1000X2150 | 2 |
| DW80 | 2150 | 1000X2150 | 2 |
| DW81 | 2150 | 1000X2150 | 2 |
| DW82 | 2150 | 1000X2150 | 2 |
| DW83 | 2150 | 1000X2150 | 2 |
| DW84 | 2150 | 1000X2150 | 2 |
| DW85 | 2150 | 1000X2150 | 2 |
| DW86 | 2150 | 1000X2150 | 2 |
| DW87 | 2150 | 1000X2150 | 2 |
| DW88 | 2150 | 1000X2150 | 2 |
| DW89 | 2150 | 1000X2150 | 2 |
| DW90 | 2150 | 1000X2150 | 2 |
| DW91 | 2150 | 1000X2150 | 2 |
| DW92 | 2150 | 1000X2150 | 2 |
| DW93 | 2150 | 1000X2150 | 2 |
| DW94 | 2150 | 1000X2150 | 2 |
| DW95 | 2150 | 1000X2150 | 2 |
| DW96 | 2150 | 1000X2150 | 2 |
| DW97 | 2150 | 1000X2150 | 2 |
| DW98 | 2150 | 1000X2150 | 2 |
| DW99 | 2150 | 1000X2150 | 2 |
| DW100 | 2150 | 1000X2150 | 2 |



TYPICAL FLOOR PLAN (1ST. FLOOR TO 9TH. FLOOR)



GROUND FLOOR PLAN

DISPLAY WAYWAY PVT LTD
 Director / Authorised Signatory

CERTIFICATE OF OWNER
 I HEREBY CERTIFY THAT I HAVE DONE THROUGH THE BUILDING...
 DISPLAY WAYWAY PVT LTD
 Director / Authorised Signatory

CERTIFICATE OF STRUCTURAL STABILITY
 WE HEREBY CERTIFY THAT THE FOUNDATION AND THE SUPERSTRUCTURE OF THE BUILDING PROPOSED FOR CONSTRUCTION ON...
 SULOY SARKAR
 B.E. M.C.E. (H.A. WARE)
 TECHNICAL ENGINEER
 REG. NO. CA/187/1928
 ARCHITECT (R.S. 204)

SEET PRATEE OF LAND
 I HAVE PERSONALLY VERIFIED THE SITE AND FOUND IT IS SUITABLE AND TO MY KNOWLEDGE IT IS NOT A TANK OR FILLED UP TANK.
 AT PRALABH BHAYAT KHAR ASHARA
 B. Arch., A.I.A.
 REG. NO. CA/187/1928
 ARCHITECT (R.S. 204)

TITLE: GROUND FLOOR PLAN, TYPICAL FLOOR PLAN (1ST. TO 9TH) & ROOF PLAN BLOCK 1K
 PROJECT: PROPOSED ADDITIONAL ONE FLOOR ON SANCTIONED (B-G-44) STORED RESIDENTIAL BUILDING BLOCK NO. 1 & 1A ALONG WITH TWO FLOORS ON SANCTIONED (B-G-44) STORED RESIDENTIAL BUILDING OF BLOCK NO. 1A, 1B, 1C, 1D, 1E, 1F, 1G, 1H & (B-G-44) STORED M/C/F BLOCK WIDE SANCTIONED (B.P. NO. 130414) IS DATED 18.06.2015. AT R.S. DAG NO. - 444, 444 / 862, 448, 446, 447(P), 448(P), 457 TO 460, 506 TO 513, 516(P), 517 TO 518, 521 / 862, 502 TO 506, 508 / 864, 505, 707 TO 711 & 720 TO 724, CONTAINED IN L.R. 451494, 451495, 451496, 451497, 451498, 451499, 451500, 451501, 451502, 451503, 451504, 451505, 451506, 451507, 451508, 451509, 451510, 451511, 451512, 451513, 451514, 451515, 451516, 451517, 451518, 451519, 451520, 451521, 451522, 451523, 451524, 451525, 451526, 451527, 451528, 451529, 451530, 451531, 451532, 451533, 451534, 451535, 451536, 451537, 451538, 451539, 451540, 451541, 451542, 451543, 451544, 451545, 451546, 451547, 451548, 451549, 451550, 451551, 451552, 451553, 451554, 451555, 451556, 451557, 451558, 451559, 451560, 451561, 451562, 451563, 451564, 451565, 451566, 451567, 451568, 451569, 451570, 451571, 451572, 451573, 451574, 451575, 451576, 451577, 451578, 451579, 451580, 451581, 451582, 451583, 451584, 451585, 451586, 451587, 451588, 451589, 451590, 451591, 451592, 451593, 451594, 451595, 451596, 451597, 451598, 451599, 451600, 451601, 451602, 451603, 451604, 451605, 451606, 451607, 451608, 451609, 451610, 451611, 451612, 451613, 451614, 451615, 451616, 451617, 451618, 451619, 451620, 451621, 451622, 451623, 451624, 451625, 451626, 451627, 451628, 451629, 451630, 451631, 451632, 451633, 451634, 451635, 451636, 451637, 451638, 451639, 451640, 451641, 451642, 451643, 451644, 451645, 451646, 451647, 451648, 451649, 451650, 451651, 451652, 451653, 451654, 451655, 451656, 451657, 451658, 451659, 451660, 451661, 451662, 451663, 451664, 451665, 451666, 451667, 451668, 451669, 451670, 451671, 451672, 451673, 451674, 451675, 451676, 451677, 451678, 451679, 451680, 451681, 451682, 451683, 451684, 451685, 451686, 451687, 451688, 451689, 451690, 451691, 451692, 451693, 451694, 451695, 451696, 451697, 451698, 451699, 451700, 451701, 451702, 451703, 451704, 451705, 451706, 451707, 451708, 451709, 451710, 451711, 451712, 451713, 451714, 451715, 451716, 451717, 451718, 451719, 451720, 451721, 451722, 451723, 451724, 451725, 451726, 451727, 451728, 451729, 451730, 451731, 451732, 451733, 451734, 451735, 451736, 451737, 451738, 451739, 451740, 451741, 451742, 451743, 451744, 451745, 451746, 451747, 451748, 451749, 451750, 451751, 451752, 451753, 451754, 451755, 451756, 451757, 451758, 451759, 451760, 451761, 451762, 451763, 451764, 451765, 451766, 451767, 451768, 451769, 451770, 451771, 451772, 451773, 451774, 451775, 451776, 451777, 451778, 451779, 451780, 451781, 451782, 451783, 451784, 451785, 451786, 451787, 451788, 451789, 451790, 451791, 451792, 451793, 451794, 451795, 451796, 451797, 451798, 451799, 451800, 451801, 451802, 451803, 451804, 451805, 451806, 451807, 451808, 451809, 451810, 451811, 451812, 451813, 451814, 451815, 451816, 451817, 451818, 451819, 451820, 451821, 451822, 451823, 451824, 451825, 451826, 451827, 451828, 451829, 451830, 451831, 451832, 451833, 451834, 451835, 451836, 451837, 451838, 451839, 451840, 451841, 451842, 451843, 451844, 451845, 451846, 451847, 451848, 451849, 451850, 451851, 451852, 451853, 451854, 451855, 451856, 451857, 451858, 451859, 451860, 451861, 451862, 451863, 451864, 451865, 451866, 451867, 451868, 451869, 451870, 451871, 451872, 451873, 451874, 451875, 451876, 451877, 451878, 451879, 451880, 451881, 451882, 451883, 451884, 451885, 451886, 451887, 451888, 451889, 451890, 451891, 451892, 451893, 451894, 451895, 451896, 451897, 451898, 451899, 451900, 451901, 451902, 451903, 451904, 451905, 451906, 451907, 451908, 451909, 451910, 451911, 451912, 451913, 451914, 451915, 451916, 451917, 451918, 451919, 451920, 451921, 451922, 451923, 451924, 451925, 451926, 451927, 451928, 451929, 451930, 451931, 451932, 451933, 451934, 451935, 451936, 451937, 451938, 451939, 451940, 451941, 451942, 451943, 451944, 451945, 451946, 451947, 451948, 451949, 451950, 451951, 451952, 451953, 451954, 451955, 451956, 451957, 451958, 451959, 451960, 451961, 451962, 451963, 451964, 451965, 451966, 451967, 451968, 451969, 451970, 451971, 451972, 451973, 451974, 451975, 451976, 451977, 451978, 451979, 451980, 451981, 451982, 451983, 451984, 451985, 451986, 451987, 451988, 451989, 451990, 451991, 451992, 451993, 451994, 451995, 451996, 451997, 451998, 451999, 452000, 452001, 452002, 452003, 452004, 452005, 452006, 452007, 452008, 452009, 452010, 452011, 452012, 452013, 452014, 452015, 452016, 452017, 452018, 452019, 452020, 452021, 452022, 452023, 452024, 452025, 452026, 452027, 452028, 452029, 452030, 452031, 452032, 452033, 452034, 452035, 452036, 452037, 452038, 452039, 452040, 452041, 452042, 452043, 452044, 452045, 452046, 452047, 452048, 452049, 452050, 452051, 452052, 452053, 452054, 452055, 452056, 452057, 452058, 452059, 452060, 452061, 452062, 452063, 452064, 452065, 452066, 452067, 452068, 452069, 452070, 452071, 452072, 452073, 452074, 452075, 452076, 452077, 452078, 452079, 452080, 452081, 452082, 452083, 452084, 452085, 452086, 452087, 452088, 452089, 452090, 452091, 452092, 452093, 452094, 452095, 452096, 452097, 452098, 452099, 452100, 452101, 452102, 452103, 452104, 452105, 452106, 452107, 452108, 452109, 452110, 452111, 452112, 452113, 452114, 452115, 452116, 452117, 452118, 452119, 452120, 452121, 452122, 452123, 452124, 452125, 452126, 452127, 452128, 452129, 452130, 452131, 452132, 452133, 452134, 452135, 452136, 452137, 452138, 452139, 452140, 452141, 452142, 452143, 452144, 452145, 452146, 452147, 452148, 452149, 452150, 452151, 452152, 452153, 452154, 452155, 452156, 452157, 452158, 452159, 452160, 452161, 452162, 452163, 452164, 452165, 452166, 452167, 452168, 452169, 452170, 452171, 452172, 452173, 452174, 452175, 452176, 452177, 452178, 452179, 452180, 452181, 452182, 452183, 452184, 452185, 452186, 452187, 452188, 452189, 452190, 452191, 452192, 452193, 452194, 452195, 452196, 452197, 452198, 452199, 452200, 452201, 452202, 452203, 452204, 452205, 452206, 452207, 452208, 452209, 452210, 452211, 452212, 452213, 452214, 452215, 452216, 452217, 452218, 452219, 452220, 452221, 452222, 452223, 452224, 452225, 452226, 452227, 452228, 452229, 452230, 452231, 452232, 452233, 452234, 452235, 452236, 452237, 452238, 452239, 452240, 452241, 452242, 452243, 452244, 452245, 452246, 452247, 452248, 452249, 452250, 452251, 452252, 452253, 452254, 452255, 452256, 452257, 452258, 452259, 452260, 452261, 452262, 452263, 452264, 452265, 452266, 452267, 452268, 452269, 452270, 452271, 452272, 452273, 452274, 452275, 452276, 452277, 452278, 452279, 452280, 452281, 452282, 452283, 452284, 452285, 452286, 452287, 452288, 452289, 452290, 452291, 452292, 452293, 452294, 452295, 452296, 452297, 452298, 452299, 452300, 452301, 452302, 452303, 452304, 452305, 452306, 452307, 452308, 452309, 452310, 452311, 452312, 452313, 452314, 452315, 452316, 452317, 452318, 452319, 452320, 452321, 452322, 452323, 452324, 452325, 452326, 452327, 452328, 452329, 452330, 452331, 452332, 452333, 452334, 452335, 452336, 452337, 452338, 452339, 452340, 452341, 452342, 452343, 452344, 452345, 452346, 452347, 452348, 452349, 452350, 452351, 452352, 452353, 452354, 452355, 452356, 452357, 452358, 452359, 452360, 452361, 452362, 452363, 452364, 452365, 452366, 4523