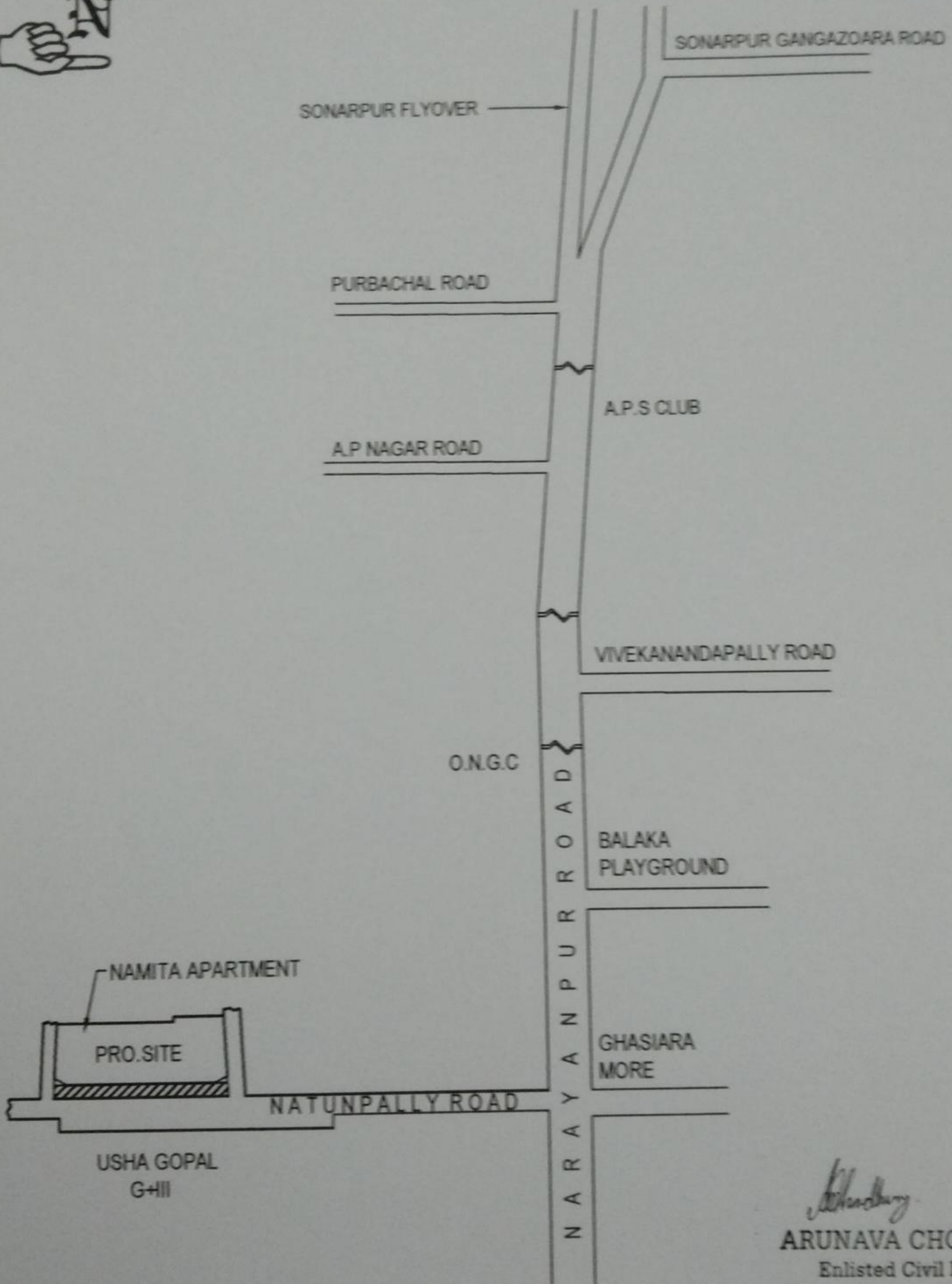
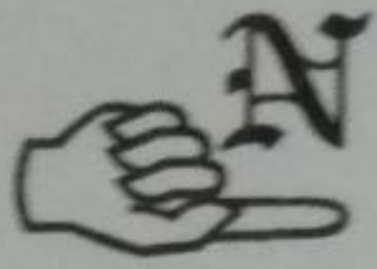


LOCATION PLAN OF NAMITA APARTMENT AT MOUZA - SONARPUR, J.L NO.- 39,
R.S DAG NO.- 1692, R.S KHATIAN NO.- 460, HOLDING NO.- 260 NATUNPALLY
(PASCHIM), WARD NO.- 12 UNDER RAJPUR - SONARPUR MUNICIPALITY ,
SOUTH 24 PARGANAS, KOL.- 700150. SCALE - N.T.S



Arunava Chowdhury
ARUNAVA CHOWDHURY
Enlisted Civil Engineer
Rajpur-Sonarpur Municipality
LIC No.-EBS095
Deshbandhupark Sonarpur
Kolkata-700150

SIGNATURE OF E.B.S