

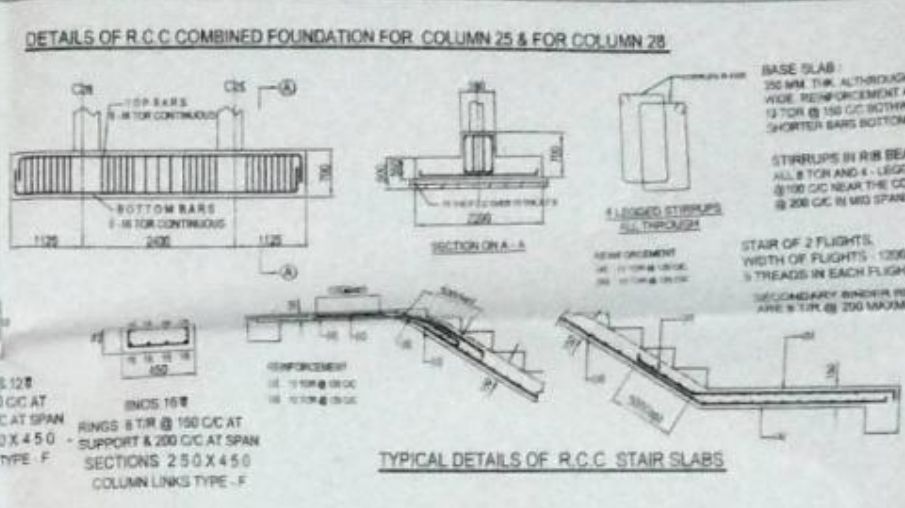
SCHEDULE FOR R.C.C. COMBINED COLUMN FOUNDATIONS										
COLUMN NO.	AREA OF SLAB	THICKNESS OF SLAB	REINFORCEMENT OF BASE SLAB		WIDTH	DEPTH TOTAL	HORIZONTAL REINF. BARS			STIRRUPS
			NUMBER (LENGTH) / (WIDTH)	LENGTH (WIDTH)			CONTINUOUS BARS	EXTRA SHORT BARS	STIRRUPS	
CC-1	4.50 X 2.00	150	12# @ 150 CC	12# @ 150 CC	550	700	2NOS 16#	2NOS 16#	X	X

SCHEDULE OF ISOLATED COLUMN FOOTINGS						
COLUMN NO.	NOTE	AREA OF BASE SLAB	REINFORCEMENT OF BASE SLAB		THICKNESS	PEDESTAL SECTION
			AT TOE	AT HEEL		
CC-1	1 NOS	2200 X 2200	12# @ 150 CC	12# @ 150 CC	200	400 X 400
CC-2	1 NOS	2400 X 2400	12# @ 150 CC	12# @ 150 CC	200	400 X 400
CC-3	1 NOS	2600 X 2600	12# @ 150 CC	12# @ 150 CC	200	400 X 400
CC-4	1 NOS	2700 X 2700	12# @ 125 CC	12# @ 125 CC	200	400 X 400
CC-5	1 NOS	2800 X 2800	12# @ 125 CC	12# @ 125 CC	200	400 X 400
CC-6	1 NOS	3350 X 2000	12# @ 125 CC	12# @ 125 CC	200	400 X 400
CC-7	1 NOS	3350 X 2000	12# @ 125 CC	12# @ 125 CC	200	400 X 400
CC-8	1 NOS	3300 X 2200	12# @ 125 CC	12# @ 125 CC	200	400 X 400
CC-9	1 NOS	3000 X 2400	12# @ 125 CC	12# @ 125 CC	200	400 X 400

SCHEDULE OF R.C.C. COLUMNS						
COLUMN NO.	NOTE	COLUMN SECTION	REINFORCEMENT FOR COLUMN SECTION			STIRRUPS
			IN FLOOR, 1ST & 2ND FLOOR	IN 3RD FLOOR	ABOVE ROOF OF 3RD FLOOR	
CC-1	1 COLS	250 X 400	1NOS 16# SECT. TYPE A	2NOS 16# SECT. TYPE B		X
CC-2	1 COLS	250 X 400	1NOS 16# SECT. TYPE C	1NOS 16# SECT. TYPE A		X
CC-3	1 COLS	250 X 400	1NOS 16# SECT. TYPE D	1NOS 16# + 2NOS 12# SECT. TYPE C		X
CC-4	1 COLS	250 X 450	1NOS 16# + 2NOS 12# SECT. TYPE E	1NOS 16# SECT. TYPE F	SECTION 250 X 400 WITH 16# @ 200	X

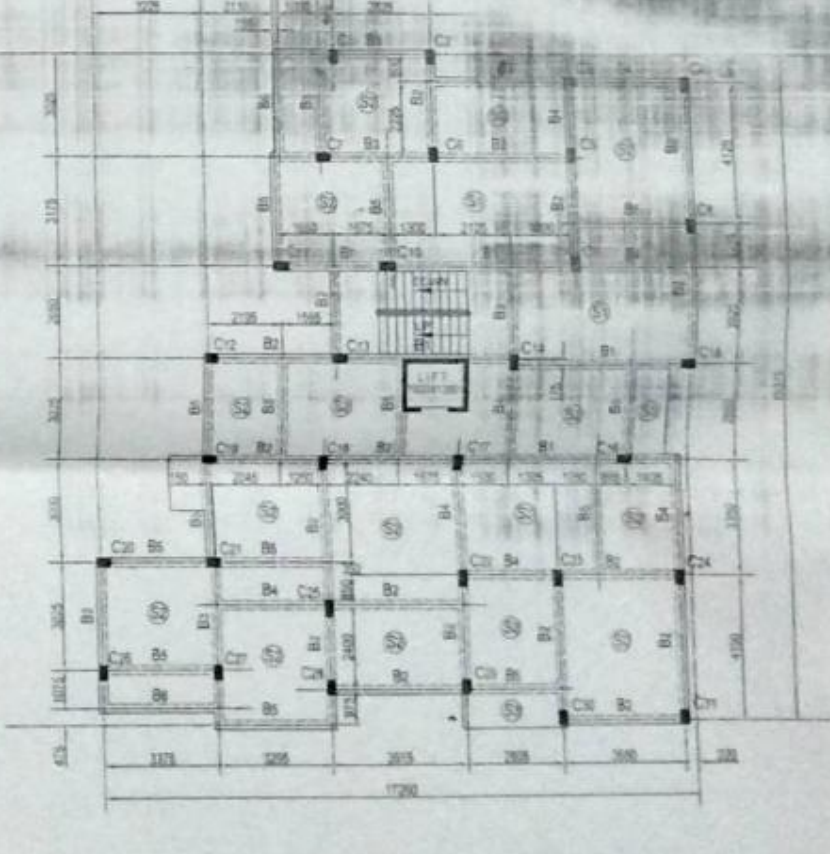
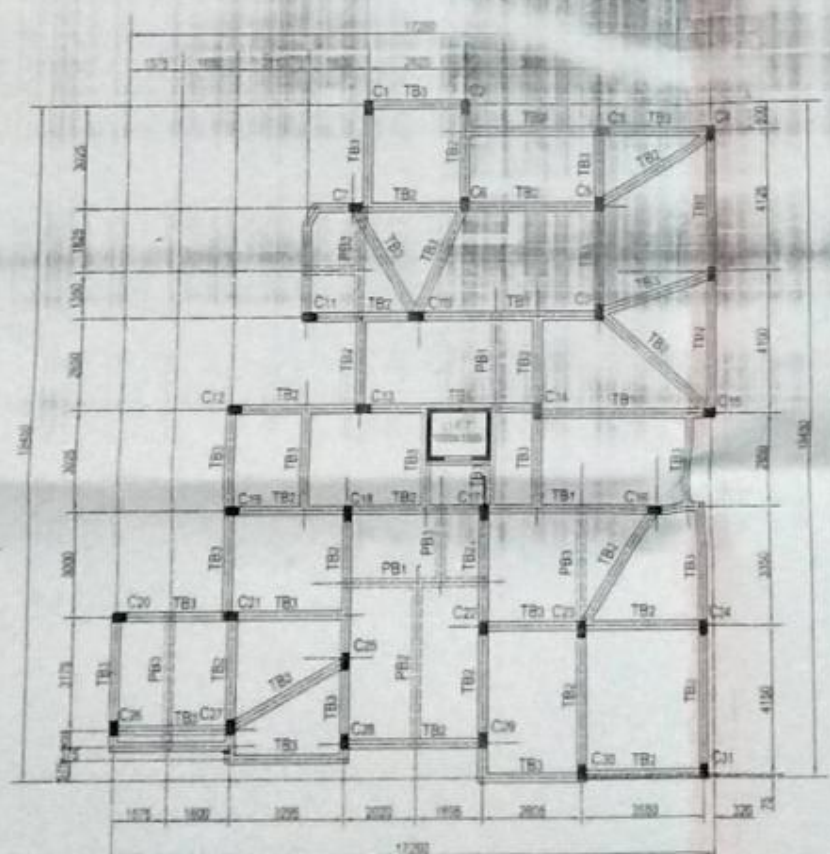
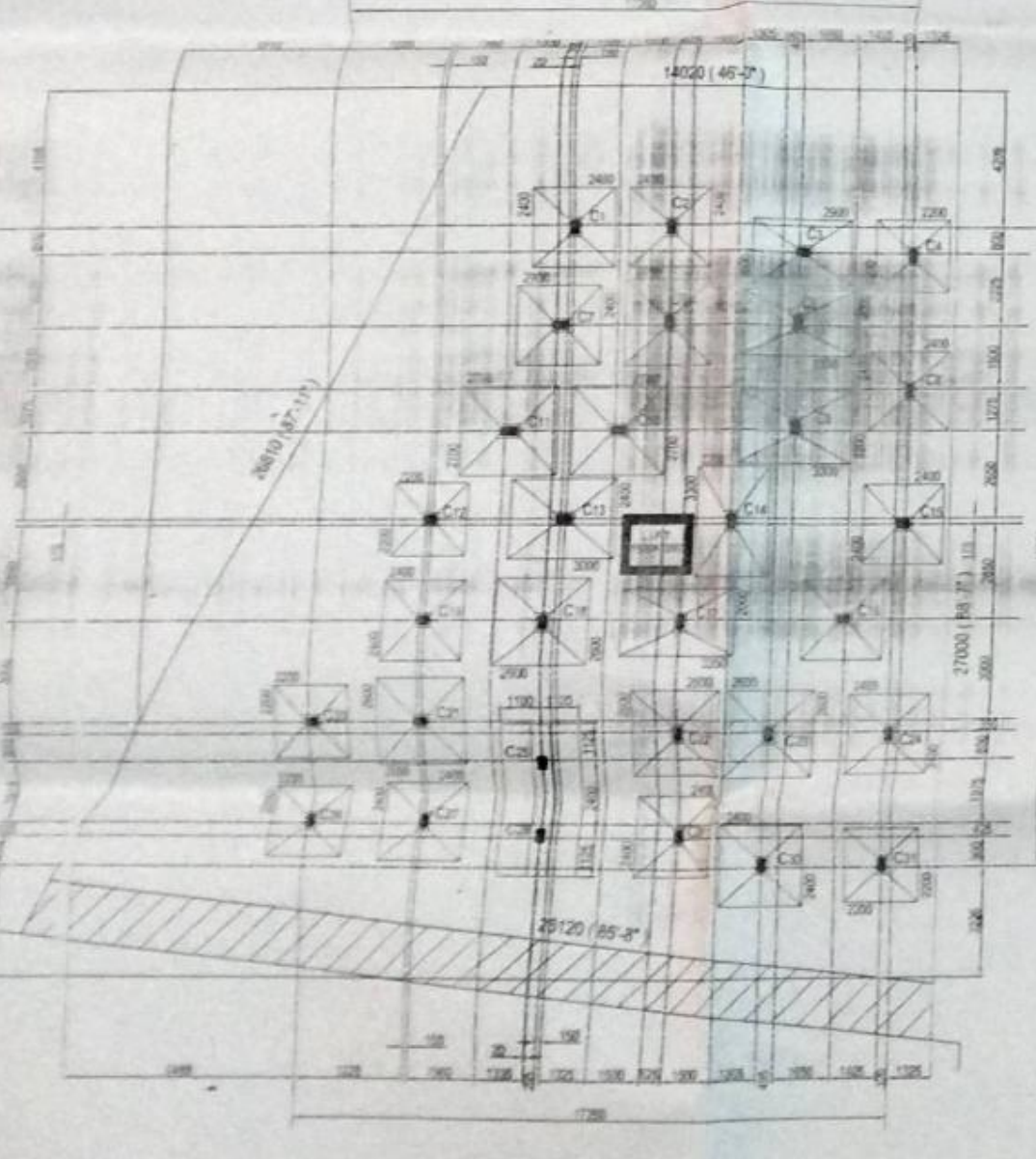
SCHEDULE OF R.C.C. TIE BEAMS AT GROUND							
TIE BEAM MARKED	SECTION	WIDTH	DEPTH	HORIZONTAL REINFORCEMENT BARS			STIRRUPS
				CONTINUOUS BARS	EXTRA SHORT BARS	STIRRUPS	
TB-1	250 X 350	250	350	1NOS 16#	2NOS 16#	2NOS 16#	ALL 8# 2-LEGGED @ 150 CC NEAR SUPPORT
TB-2	250 X 350	250	350	2NOS 16#	2NOS 16#	2NOS 16#	ALL 8# 2-LEGGED @ 150 CC NEAR SUPPORT
TB-3	250 X 350	250	350	2NOS 16#	2NOS 16#	1NOS 16#	ALL 8# 2-LEGGED @ 200 CC

R.C.C. PLINTH BEAMS PLACED ON TOP OF TIE BEAMS							
PLINTH BEAM MARKED	SECTION	WIDTH	DEPTH	HORIZONTAL REINFORCEMENT BARS			STIRRUPS
				CONTINUOUS BARS	EXTRA SHORT BARS	STIRRUPS	
PB-1	250 X 350	250	350	2NOS 16#	2NOS 16#	2NOS 16#	ALL 8# 2-LEGGED @ 200 CC
PB-2	250 X 350	250	350	1NOS 12#	2NOS 12#	X	ALL 8# 2-LEGGED @ 200 CC
PB-3	250 X 350	250	350	2NOS 12#	2NOS 12#	X	ALL 8# 2-LEGGED @ 200 CC



SCHEDULE OF R.C.C. FLOOR SLABS								
SLAB PANEL NO.	NOTE	OVERALL THICKNESS	REINFORCEMENT FOR MAIN SPAN			REINFORCEMENT FOR DISTRIBUTION SPAN		
			AT BOTTOM	AT TOP	AT BOTTOM	AT TOP	AT BOTTOM	AT TOP
S1	THICKER	125 MM	12# @ 150 CC	12# @ 150 CC	12# @ 150 CC	12# @ 150 CC	12# @ 150 CC	12# @ 150 CC
S2	GENERAL	100 MM	12# @ 150 CC	12# @ 150 CC	12# @ 150 CC	12# @ 150 CC	12# @ 150 CC	12# @ 150 CC
S3	CANTILEVER	100 MM	12# @ 150 CC	12# @ 150 CC	12# @ 150 CC	12# @ 150 CC	12# @ 150 CC	12# @ 150 CC

SCHEDULE OF R.C.C. FLOOR BEAMS							
BEAM NO.	SECTION	WIDTH	DEPTH	HORIZONTAL REINF. BARS			STIRRUPS
				CONTINUOUS BARS	EXTRA TOP BARS	EXTRA AT BOTTOM	
B1	250 X 450	250	450	1NOS 16#	1NOS 16#	2NOS 16#	8# @ 150 CC
B2	250 X 450	250	450	2NOS 16#	2NOS 16#	2NOS 16#	8# @ 150 CC
B3	250 X 450	250	450	2NOS 16#	2NOS 16#	2NOS 16#	8# @ 150 CC
B4	250 X 400	250	400	1NOS 16#	1NOS 16#	1NOS 16#	8# @ 150 CC
B5	250 X 350	250	350	1NOS 16#	1NOS 16#	1NOS 16#	8# @ 150 CC



STRUCTURAL PLAN OF PROPOSED G+3 STORED RESIDENTIAL BUILDING OF CHATTERJEE CONSTRUCTION AT MOUZA - SONARPUR, J.L. NO. 39, R.S. DAG NO. 1532, R.S. KHATIAN NO. 498, HOLDING NO. 186 RADHAGOBINDAPALLY, WARD NO. 12, UNDER RAJPUR - SONARPUR MUNICIPALITY, P.S. - SONARPUR, DIST. - SOUTH 24 PARGANAS, KOL. - 195.

GENERAL NOTES AND SPECIFICATIONS
UNLESS OTHERWISE MENTIONED ALL DIMENSIONS ARE IN MILLIMETERS.
THIS DRAWING SHOULD BE READ IN CONJUNCTION WITH THE ARCHITECTURAL DRAWING.
ALL R.C.C. WORK SHALL BE WITH REINFORCEMENT BARS OF 10MM FOR STEEL. CATEGORY.
ALL R.C.C. WORK SHALL BE WITH 20 GRADE M-20 CONCRETE.
PROPER ANCHORAGES AND DEVELOPMENT LENGTHS WILL BE PROVIDED TO THE REINFORCEMENT BARS WHERE REQUIRED.
REINFORCEMENT CLEARANCE TO BE MAINTAINED AS PER IS 456:2000.
STRUCTURAL SAFETY CERTIFIED:
CERTIFIED THAT FOUNDATIONS AND SUPERSTRUCTURES OF THIS PROPOSED G+3 STORED BUILDING HAVE BEEN DESIGNED BY ME AS TO BE SAFE AND STABLE UNDER ALL PROBABLE LOAD CONDITIONS INCLUDING SEISMIC LOADS PER IS 456:2000.

SIGNATURE OF ENGINEER

SIGNATURE OF ARCHITECT

CONTRACTED

REFERENCE NO. 100/2019/1000

DRAWING NO. 11/20/2019

SCALE: 1/100

DATE: 10/10/2019

PROJECT: RESIDENTIAL BUILDING AT MOUZA - SONARPUR, J.L. NO. 39, R.S. DAG NO. 1532, R.S. KHATIAN NO. 498, HOLDING NO. 186 RADHAGOBINDAPALLY, WARD NO. 12, UNDER RAJPUR - SONARPUR MUNICIPALITY, P.S. - SONARPUR, DIST. - SOUTH 24 PARGANAS, KOL. - 195.