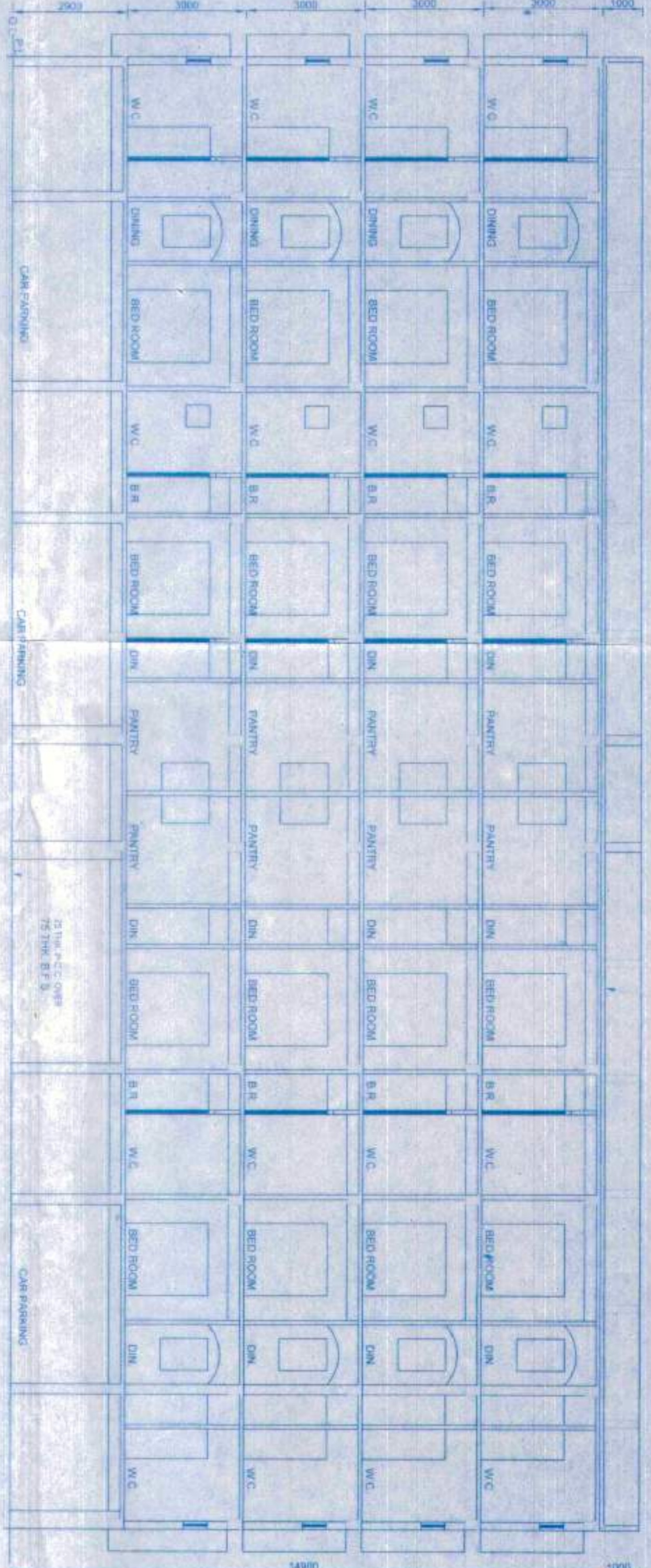
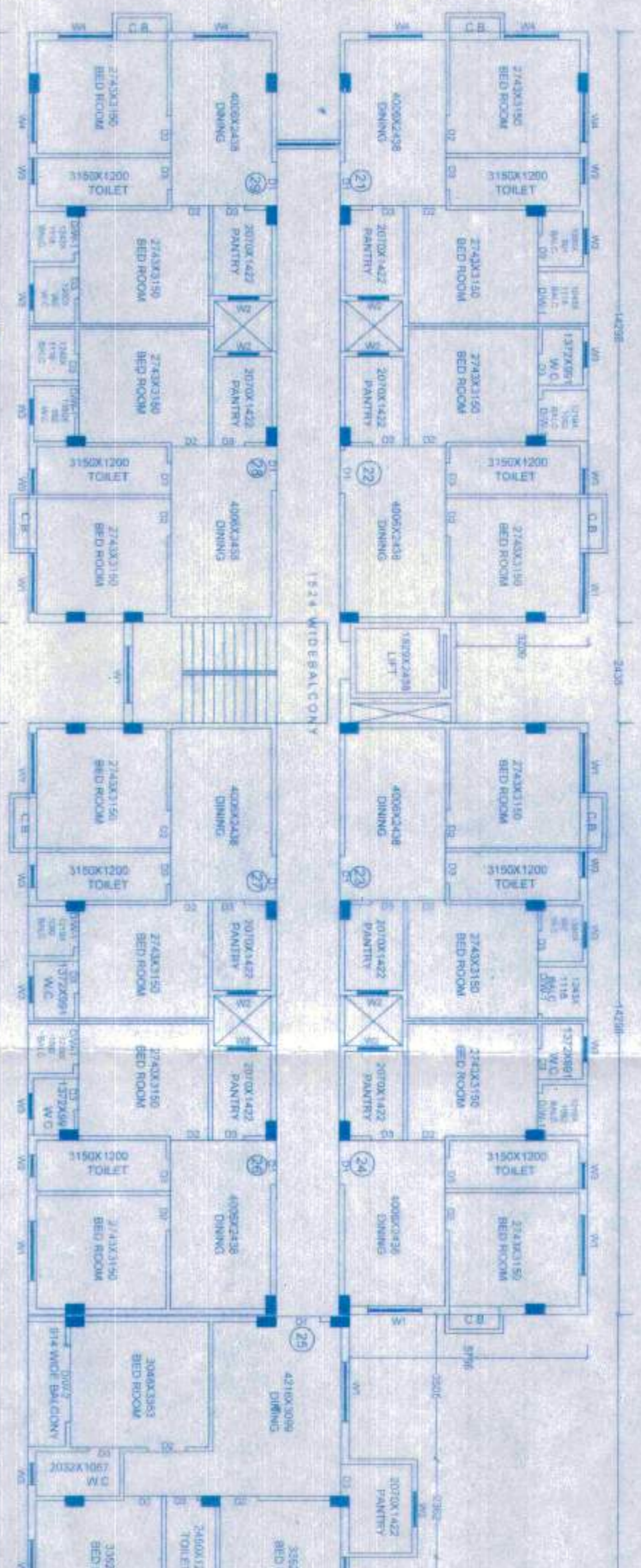


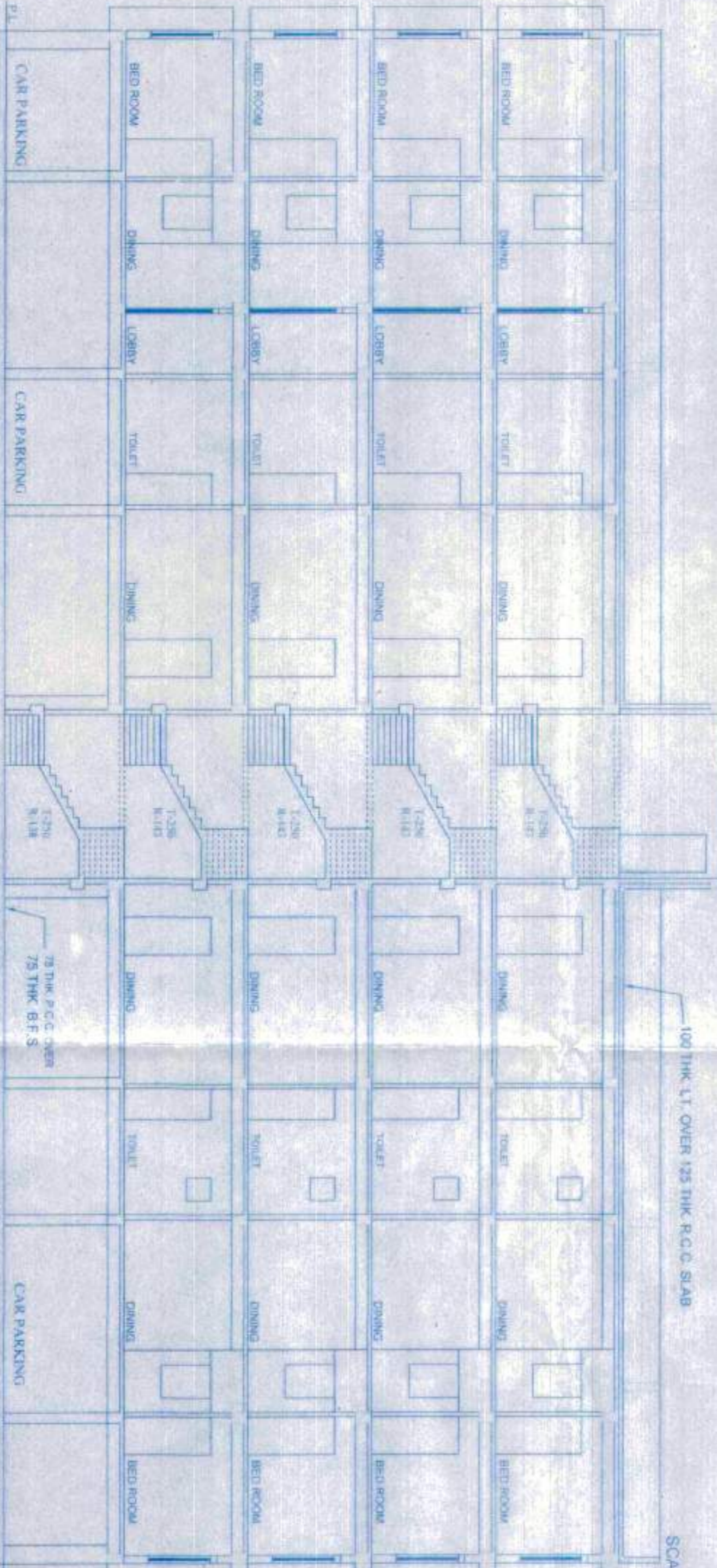
FRONT ELEVATION (BLOCK-A & B)



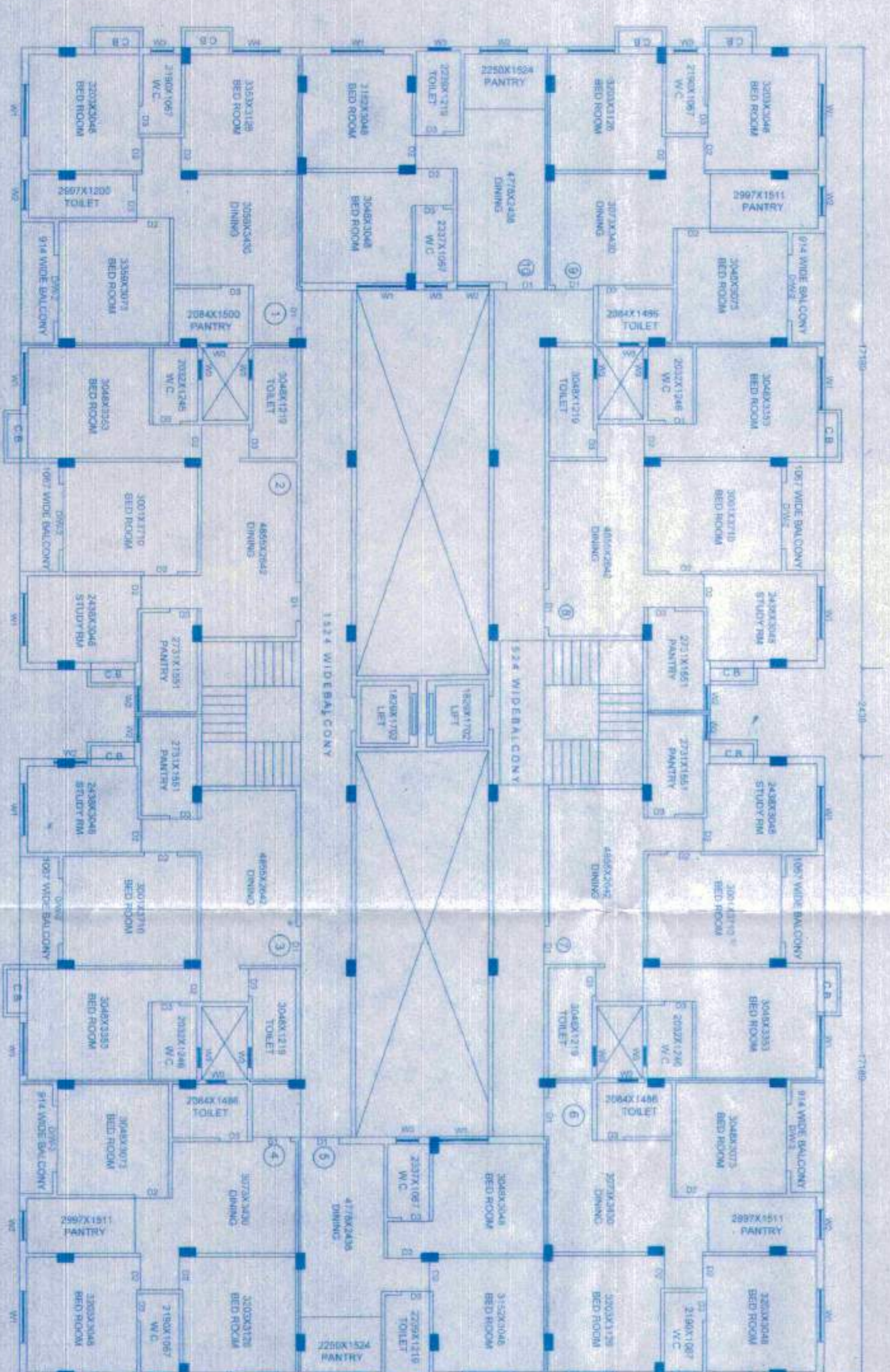
SECTION ON-B-B' (BLOCK-A&B)



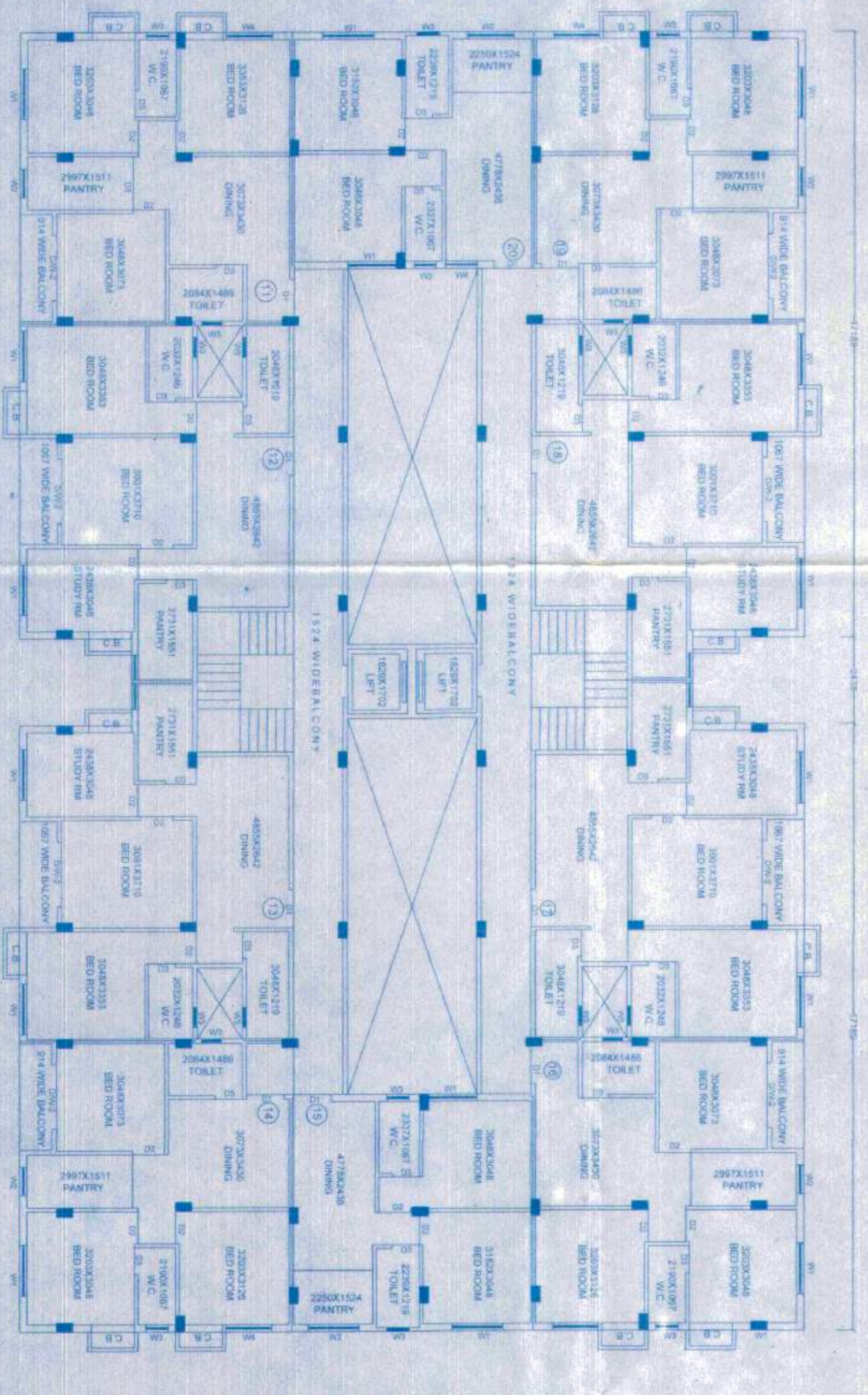
TYPICAL FLOOR PLAN BOLCK-C



SECTION ON-B-B' (BLOCK-A&B)



TYPICAL FLOOR PLAN BOLCK-A



TYPICAL FLOOR PLAN BOLCK-B



Manoj K. Saha  
 Dipanwita Chatterjee  
 Architects

**PROPOSED G+IV STORED RESIDENTIAL BUILDING PLAN OF KANTA RAM SARDER @ KANTA SARDER, ANNAPURNA SARDER, SITUATED AT RS./LR. DAG NOS: 686, 687, 688, & 689. L.R. KHATIAN NOS: 128, 1141, MOUZA: KALIKAPUR**  
**JL NO: 40, POLICE STATION-RAJARHAT, DIST- NORTH 24 PARGANAS, UNDER PATHARGHATA GRAMPANCHAYET.**

**AREA STATEMENT:**  
 AREA OF LAND= 58K-12CH-14 SFT (6998.00 SQM)  
 PERMISSIBLE F.A.R= 2.25 (6995.50 SQM)  
 PROPOSED F.A.R= 2.243(869.56 SQM)

- 1) COVERED AREA OF GROUND FLOOR = 183.45 SQM (48.86%)  
 (BLOCK-A=615.446 SQM + BLOCK-B=415.446 SQM + BLOCK-C=792.595 SQM)
- 2) COVERED AREA OF TYPICAL FLOOR = 2352.17 SQM  
 (BLOCK-A=716.005 SQM + BLOCK-B=716.005 SQM + BLOCK-C=920.16 SQM)
- 3) LEFT OPEN AREA = 2004.55 SQM
- 4) PROPOSED CAR PARKING = 84 NOS

**TENEMENT AREA:**  
 7-42.63 SQM, 2-49.71 SQM, 3-67.17 SQM, 4-83.87 SQM, 5-46.31 SQM, 6-64.93 SQM, 7-42.63 SQM, 8-49.71 SQM, 9-67.17 SQM, 10-83.87 SQM, 11-46.31 SQM, 12-64.93 SQM, 13-42.63 SQM, 14-49.71 SQM, 15-67.17 SQM, 16-83.87 SQM, 17-46.31 SQM, 18-64.93 SQM, 19-42.63 SQM, 20-49.71 SQM, 21-67.17 SQM, 22-83.87 SQM, 23-46.31 SQM, 24-64.93 SQM, 25-42.63 SQM, 26-49.71 SQM, 27-67.17 SQM, 28-83.87 SQM, 29-46.31 SQM, 30-64.93 SQM, 31-42.63 SQM, 32-49.71 SQM, 33-67.17 SQM, 34-83.87 SQM, 35-46.31 SQM, 36-64.93 SQM, 37-42.63 SQM, 38-49.71 SQM, 39-67.17 SQM, 40-83.87 SQM, 41-46.31 SQM, 42-64.93 SQM, 43-42.63 SQM, 44-49.71 SQM, 45-67.17 SQM, 46-83.87 SQM, 47-46.31 SQM, 48-64.93 SQM, 49-42.63 SQM, 50-49.71 SQM, 51-67.17 SQM, 52-83.87 SQM, 53-46.31 SQM, 54-64.93 SQM, 55-42.63 SQM, 56-49.71 SQM, 57-67.17 SQM, 58-83.87 SQM, 59-46.31 SQM, 60-64.93 SQM, 61-42.63 SQM, 62-49.71 SQM, 63-67.17 SQM, 64-83.87 SQM, 65-46.31 SQM, 66-64.93 SQM, 67-42.63 SQM, 68-49.71 SQM, 69-67.17 SQM, 70-83.87 SQM, 71-46.31 SQM, 72-64.93 SQM, 73-42.63 SQM, 74-49.71 SQM, 75-67.17 SQM, 76-83.87 SQM, 77-46.31 SQM, 78-64.93 SQM, 79-42.63 SQM, 80-49.71 SQM, 81-67.17 SQM, 82-83.87 SQM, 83-46.31 SQM, 84-64.93 SQM, 85-42.63 SQM, 86-49.71 SQM, 87-67.17 SQM, 88-83.87 SQM, 89-46.31 SQM, 90-64.93 SQM, 91-42.63 SQM, 92-49.71 SQM, 93-67.17 SQM, 94-83.87 SQM, 95-46.31 SQM, 96-64.93 SQM, 97-42.63 SQM, 98-49.71 SQM, 99-67.17 SQM, 100-83.87 SQM, 101-46.31 SQM, 102-64.93 SQM, 103-42.63 SQM, 104-49.71 SQM, 105-67.17 SQM, 106-83.87 SQM, 107-46.31 SQM, 108-64.93 SQM, 109-42.63 SQM, 110-49.71 SQM, 111-67.17 SQM, 112-83.87 SQM, 113-46.31 SQM, 114-64.93 SQM, 115-42.63 SQM, 116-49.71 SQM, 117-67.17 SQM, 118-83.87 SQM, 119-46.31 SQM, 120-64.93 SQM, 121-42.63 SQM, 122-49.71 SQM, 123-67.17 SQM, 124-83.87 SQM, 125-46.31 SQM, 126-64.93 SQM, 127-42.63 SQM, 128-49.71 SQM, 129-67.17 SQM, 130-83.87 SQM, 131-46.31 SQM, 132-64.93 SQM, 133-42.63 SQM, 134-49.71 SQM, 135-67.17 SQM, 136-83.87 SQM, 137-46.31 SQM, 138-64.93 SQM, 139-42.63 SQM, 140-49.71 SQM, 141-67.17 SQM, 142-83.87 SQM, 143-46.31 SQM, 144-64.93 SQM, 145-42.63 SQM, 146-49.71 SQM, 147-67.17 SQM, 148-83.87 SQM, 149-46.31 SQM, 150-64.93 SQM, 151-42.63 SQM, 152-49.71 SQM, 153-67.17 SQM, 154-83.87 SQM, 155-46.31 SQM, 156-64.93 SQM, 157-42.63 SQM, 158-49.71 SQM, 159-67.17 SQM, 160-83.87 SQM, 161-46.31 SQM, 162-64.93 SQM, 163-42.63 SQM, 164-49.71 SQM, 165-67.17 SQM, 166-83.87 SQM, 167-46.31 SQM, 168-64.93 SQM, 169-42.63 SQM, 170-49.71 SQM, 171-67.17 SQM, 172-83.87 SQM, 173-46.31 SQM, 174-64.93 SQM, 175-42.63 SQM, 176-49.71 SQM, 177-67.17 SQM, 178-83.87 SQM, 179-46.31 SQM, 180-64.93 SQM, 181-42.63 SQM, 182-49.71 SQM, 183-67.17 SQM, 184-83.87 SQM, 185-46.31 SQM, 186-64.93 SQM, 187-42.63 SQM, 188-49.71 SQM, 189-67.17 SQM, 190-83.87 SQM, 191-46.31 SQM, 192-64.93 SQM, 193-42.63 SQM, 194-49.71 SQM, 195-67.17 SQM, 196-83.87 SQM, 197-46.31 SQM, 198-64.93 SQM, 199-42.63 SQM, 200-49.71 SQM, 201-67.17 SQM, 202-83.87 SQM, 203-46.31 SQM, 204-64.93 SQM, 205-42.63 SQM, 206-49.71 SQM, 207-67.17 SQM, 208-83.87 SQM, 209-46.31 SQM, 210-64.93 SQM, 211-42.63 SQM, 212-49.71 SQM, 213-67.17 SQM, 214-83.87 SQM, 215-46.31 SQM, 216-64.93 SQM, 217-42.63 SQM, 218-49.71 SQM, 219-67.17 SQM, 220-83.87 SQM, 221-46.31 SQM, 222-64.93 SQM, 223-42.63 SQM, 224-49.71 SQM, 225-67.17 SQM, 226-83.87 SQM, 227-46.31 SQM, 228-64.93 SQM, 229-42.63 SQM, 230-49.71 SQM, 231-67.17 SQM, 232-83.87 SQM, 233-46.31 SQM, 234-64.93 SQM, 235-42.63 SQM, 236-49.71 SQM, 237-67.17 SQM, 238-83.87 SQM, 239-46.31 SQM, 240-64.93 SQM, 241-42.63 SQM, 242-49.71 SQM, 243-67.17 SQM, 244-83.87 SQM, 245-46.31 SQM, 246-64.93 SQM, 247-42.63 SQM, 248-49.71 SQM, 249-67.17 SQM, 250-83.87 SQM, 251-46.31 SQM, 252-64.93 SQM, 253-42.63 SQM, 254-49.71 SQM, 255-67.17 SQM, 256-83.87 SQM, 257-46.31 SQM, 258-64.93 SQM, 259-42.63 SQM, 260-49.71 SQM, 261-67.17 SQM, 262-83.87 SQM, 263-46.31 SQM, 264-64.93 SQM, 265-42.63 SQM, 266-49.71 SQM, 267-67.17 SQM, 268-83.87 SQM, 269-46.31 SQM, 270-64.93 SQM, 271-42.63 SQM, 272-49.71 SQM, 273-67.17 SQM, 274-83.87 SQM, 275-46.31 SQM, 276-64.93 SQM, 277-42.63 SQM, 278-49.71 SQM, 279-67.17 SQM, 280-83.87 SQM, 281-46.31 SQM, 282-64.93 SQM, 283-42.63 SQM, 284-49.71 SQM, 285-67.17 SQM, 286-83.87 SQM, 287-46.31 SQM, 288-64.93 SQM, 289-42.63 SQM, 290-49.71 SQM, 291-67.17 SQM, 292-83.87 SQM, 293-46.31 SQM, 294-64.93 SQM, 295-42.63 SQM, 296-49.71 SQM, 297-67.17 SQM, 298-83.87 SQM, 299-46.31 SQM, 300-64.93 SQM, 301-42.63 SQM, 302-49.71 SQM, 303-67.17 SQM, 304-83.87 SQM, 305-46.31 SQM, 306-64.93 SQM, 307-42.63 SQM, 308-49.71 SQM, 309-67.17 SQM, 310-83.87 SQM, 311-46.31 SQM, 312-64.93 SQM, 313-42.63 SQM, 314-49.71 SQM, 315-67.17 SQM, 316-83.87 SQM, 317-46.31 SQM, 318-64.93 SQM, 319-42.63 SQM, 320-49.71 SQM, 321-67.17 SQM, 322-83.87 SQM, 323-46.31 SQM, 324-64.93 SQM, 325-42.63 SQM, 326-49.71 SQM, 327-67.17 SQM, 328-83.87 SQM, 329-46.31 SQM, 330-64.93 SQM, 331-42.63 SQM, 332-49.71 SQM, 333-67.17 SQM, 334-83.87 SQM, 335-46.31 SQM, 336-64.93 SQM, 337-42.63 SQM, 338-49.71 SQM, 339-67.17 SQM, 340-83.87 SQM, 341-46.31 SQM, 342-64.93 SQM, 343-42.63 SQM, 344-49.71 SQM, 345-67.17 SQM, 346-83.87 SQM, 347-46.31 SQM, 348-64.93 SQM, 349-42.63 SQM, 350-49.71 SQM, 351-67.17 SQM, 352-83.87 SQM, 353-46.31 SQM, 354-64.93 SQM, 355-42.63 SQM, 356-49.71 SQM, 357-67.17 SQM, 358-83.87 SQM, 359-46.31 SQM, 360-64.93 SQM, 361-42.63 SQM, 362-49.71 SQM, 363-67.17 SQM, 364-83.87 SQM, 365-46.31 SQM, 366-64.93 SQM, 367-42.63 SQM, 368-49.71 SQM, 369-67.17 SQM, 370-83.87 SQM, 371-46.31 SQM, 372-64.93 SQM, 373-42.63 SQM, 374-49.71 SQM, 375-67.17 SQM, 376-83.87 SQM, 377-46.31 SQM, 378-64.93 SQM, 379-42.63 SQM, 380-49.71 SQM, 381-67.17 SQM, 382-83.87 SQM, 383-46.31 SQM, 384-64.93 SQM, 385-42.63 SQM, 386-49.71 SQM, 387-67.17 SQM, 388-83.87 SQM, 389-46.31 SQM, 390-64.93 SQM, 391-42.63 SQM, 392-49.71 SQM, 393-67.17 SQM, 394-83.87 SQM, 395-46.31 SQM, 396-64.93 SQM, 397-42.63 SQM, 398-49.71 SQM, 399-67.17 SQM, 400-83.87 SQM, 401-46.31 SQM, 402-64.93 SQM, 403-42.63 SQM, 404-49.71 SQM, 405-67.17 SQM, 406-83.87 SQM, 407-46.31 SQM, 408-64.93 SQM, 409-42.63 SQM, 410-49.71 SQM, 411-67.17 SQM, 412-83.87 SQM, 413-46.31 SQM, 414-64.93 SQM, 415-42.63 SQM, 416-49.71 SQM, 417-67.17 SQM, 418-83.87 SQM, 419-46.31 SQM, 420-64.93 SQM, 421-42.63 SQM, 422-49.71 SQM, 423-67.17 SQM, 424-83.87 SQM, 425-46.31 SQM, 426-64.93 SQM, 427-42.63 SQM, 428-49.71 SQM, 429-67.17 SQM, 430-83.87 SQM, 431-46.31 SQM, 432-64.93 SQM, 433-42.63 SQM, 434-49.71 SQM, 435-67.17 SQM, 436-83.87 SQM, 437-46.31 SQM, 438-64.93 SQM, 439-42.63 SQM, 440-49.71 SQM, 441-67.17 SQM, 442-83.87 SQM, 443-46.31 SQM, 444-64.93 SQM, 445-42.63 SQM, 446-49.71 SQM, 447-67.17 SQM, 448-83.87 SQM, 449-46.31 SQM, 450-64.93 SQM, 451-42.63 SQM, 452-49.71 SQM, 453-67.17 SQM, 454-83.87 SQM, 455-46.31 SQM, 456-64.93 SQM, 457-42.63 SQM, 458-49.71 SQM, 459-67.17 SQM, 460-83.87 SQM, 461-46.31 SQM, 462-64.93 SQM, 463-42.63 SQM, 464-49.71 SQM, 465-67.17 SQM, 466-83.87 SQM, 467-46.31 SQM, 468-64.93 SQM, 469-42.63 SQM, 470-49.71 SQM, 471-67.17 SQM, 472-83.87 SQM, 473-46.31 SQM, 474-64.93 SQM, 475-42.63 SQM, 476-49.71 SQM, 477-67.17 SQM, 478-83.87 SQM, 479-46.31 SQM, 480-64.93 SQM, 481-42.63 SQM, 482-49.71 SQM, 483-67.17 SQM, 484-83.87 SQM, 485-46.31 SQM, 486-64.93 SQM, 487-42.63 SQM, 488-49.71 SQM, 489-67.17 SQM, 490-83.87 SQM, 491-46.31 SQM, 492-64.93 SQM, 493-42.63 SQM, 494-49.71 SQM, 495-67.17 SQM, 496-83.87 SQM, 497-46.31 SQM, 498-64.93 SQM, 499-42.63 SQM, 500-49.71 SQM, 501-67.17 SQM, 502-83.87 SQM, 503-46.31 SQM, 504-64.93 SQM, 505-42.63 SQM, 506-49.71 SQM, 507-67.17 SQM, 508-83.87 SQM, 509-46.31 SQM, 510-64.93 SQM, 511-42.63 SQM, 512-49.71 SQM, 513-67.17 SQM, 514-83.87 SQM, 515-46.31 SQM, 516-64.93 SQM, 517-42.63 SQM, 518-49.71 SQM, 519-67.17 SQM, 520-83.87 SQM, 521-46.31 SQM, 522-64.93 SQM, 523-42.63 SQM, 524-49.71 SQM, 525-67.17 SQM, 526-83.87 SQM, 527-46.31 SQM, 528-64.93 SQM, 529-42.63 SQM, 530-49.71 SQM, 531-67.17 SQM, 532-83.87 SQM, 533-46.31 SQM, 534-64.93 SQM, 535-42.63 SQM, 536-49.71 SQM, 537-67.17 SQM, 538-83.87 SQM, 539-46.31 SQM, 540-64.93 SQM, 541-42.63 SQM, 542-49.71 SQM, 543-67.17 SQM, 544-83.87 SQM, 545-46.31 SQM, 546-64.93 SQM, 547-42.63 SQM, 548-49.71 SQM, 549-67.17 SQM, 550-83.87 SQM, 551-46.31 SQM, 552-64.93 SQM, 553-42.63 SQM, 554-49.71 SQM, 555-67.17 SQM, 556-83.87 SQM, 557-46.31 SQM, 558-64.93 SQM, 559-42.63 SQM, 560-49.71 SQM, 561-67.17 SQM, 562-83.87 SQM, 563-46.31 SQM, 564-64.93 SQM, 565-42.63 SQM, 566-49.71 SQM, 567-67.17 SQM, 568-83.87 SQM, 569-46.31 SQM, 570-64.93 SQM, 571-42.63 SQM, 572-49.71 SQM, 573-67.17 SQM, 574-83.87 SQM, 575-46.31 SQM, 576-64.93 SQM, 577-42.63 SQM, 578-49.71 SQM, 579-67.17 SQM, 580-83.87 SQM, 581-46.31 SQM, 582-64.93 SQM, 583-42.63 SQM, 584-49.71 SQM, 585-67.17 SQM, 586-83.87 SQM, 587-46.31 SQM, 588-64.93 SQM, 589-42.63 SQM, 590-49.71 SQM, 591-67.17 SQM, 592-83.87 SQM, 593-46.31 SQM, 594-64.93 SQM, 595-42.63 SQM, 596-49.71 SQM, 597-67.17 SQM, 598-83.87 SQM, 599-46.31 SQM, 600-64.93 SQM, 601-42.63 SQM, 602-49.71 SQM, 603-67.17 SQM, 604-83.87 SQM, 605-46.31 SQM, 606-64.93 SQM, 607-42.63 SQM, 608-49.71 SQM, 609-67.17 SQM, 610-83.87 SQM, 611-46.31 SQM, 612-64.93 SQM, 613-42.63 SQM, 614-49.71 SQM, 615-67.17 SQM, 616-83.87 SQM, 617-46.31 SQM, 618-64.93 SQM, 619-42.63 SQM, 620-49.71 SQM, 621-67.17 SQM, 622-83.87 SQM, 623-46.31 SQM, 624-64.93 SQM, 625-42.63 SQM, 626-49.71 SQM, 627-67.17 SQM, 628-83.87 SQM, 629-46.31 SQM, 630-64.93 SQM, 631-42.63 SQM, 632-49.71 SQM, 633-67.17 SQM, 634-83.87 SQM, 635-46.31 SQM, 636-64.93 SQM, 637-42.63 SQM, 638-49.71 SQM, 639-67.17 SQM, 640-83.87 SQM, 641-46.31 SQM, 642-64.93 SQM, 643-42.63 SQM, 644-49.71 SQM, 645-67.17 SQM, 646-83.87 SQM, 647-46.31 SQM, 648-64.93 SQM, 649-42.63 SQM, 650-49.71 SQM, 651-67.17 SQM, 652-83.87 SQM, 653-46.31 SQM, 654-64.93 SQM, 655-42.63 SQM, 656-49.71 SQM, 657-67.17 SQM, 658-83.87 SQM, 659-46.31 SQM, 660-64.93 SQM, 661-42.63 SQM, 662-49.71 SQM, 663-67.17 SQM, 664-83.87 SQM, 665-46.31 SQM, 666-64.93 SQM, 667-42.63 SQM, 668-49.71 SQM, 669-67.17 SQM, 670-83.87 SQM, 671-46.31 SQM, 672-64.93 SQM, 673-42.63 SQM, 674-49.71 SQM, 675-67.17 SQM, 676-83.87 SQM, 677-46.31 SQM, 678-64.93 SQM, 679-42.63 SQM, 680-49.71 SQM, 681-67.17 SQM, 682-83.87 SQM, 683-46.31 SQM, 684-64.93 SQM, 685-42.63 SQM, 686-49.71 SQM, 687-67.17 SQM, 688-83.87 SQM, 689-46.31 SQM, 690-64.93 SQM, 691-42.63 SQM, 692-49.71 SQM, 693-67.17 SQM, 694-83.87 SQM, 695-46.31 SQM, 696-64.93 SQM, 697-42.63 SQM, 698-49.71 SQM, 699-67.17 SQM, 700-83.87 SQM, 701-46.31 SQM, 702-64.93 SQM, 703-42.63 SQM, 704-49.71 SQM, 705-67.17 SQM, 706-83.87 SQM, 707-46.31 SQM, 708-64.93 SQM, 709-42.63 SQM, 710-49.71 SQM, 711-67.17 SQM, 712-83.87 SQM, 713-46.31 SQM, 714-64.93 SQM, 715-42.63 SQM, 716-49.71 SQM, 717-67.17 SQM, 718-83.87 SQM, 719-46.31 SQM, 720-64.93 SQM, 721-42.63 SQM, 722-49.71 SQM, 723-67.17 SQM, 724-83.87 SQM, 725-46.31 SQM, 726-64.93 SQM, 727-42.63 SQM, 728-49.71 SQM, 729-67.17 SQM, 730-83.87 SQM, 731-46.31 SQM, 732-64.93 SQM, 733-42.63 SQM, 734-49.71 SQM, 735-67.17 SQM, 736-83.87 SQM, 737-46.31 SQM, 738-64.93 SQM, 739-42.63 SQM, 740-49.71 SQM, 741-67.17 SQM, 742-83.87 SQM, 743-46.31 SQM, 744-64.93 SQM, 745-42.63 SQM, 746-49.71 SQM, 747-67.17 SQM, 748-83.87 SQM, 749-46.31 SQM, 750-64.93 SQM, 751-42.63 SQM, 752-49.71 SQM, 753-67.17 SQM, 754-83.87 SQM, 755-46.31 SQM, 756-64.93 SQM, 757-42.63 SQM, 758-49.71 SQM, 759-67.17 SQM, 760-83.87 SQM, 761-46.31 SQM, 762-64.93 SQM, 763-42.63 SQM, 764-49.71 SQM, 765-67.17 SQM, 766-83.87 SQM, 767-46.31 SQM, 768-64.93 SQM, 769-42.63 SQM, 770-49.71 SQM, 771-67.17 SQM, 772-83.87 SQM, 773-46.31 SQM, 774-64.93 SQM, 775-42.63 SQM, 776-49.71 SQM, 777-67.17 SQM, 778-83.87 SQM, 779-46.31 SQM, 780-64.93 SQM, 781-42.63 SQM, 782-49.71 SQM, 783-67.17 SQM, 784-83.87 SQM, 785-46.31 SQM, 786-64.93 SQM, 787-42.63 SQM, 788-49.71 SQM, 789-67.17 SQM, 790-83.87 SQM, 791-46.31 SQM, 792-64.93 SQM, 793-42.63 SQM, 794-49.71 SQM, 795-67.17 SQM, 796-83.87 SQM, 797-46.31 SQM, 798-64.93 SQM, 799-42.63 SQM, 800-49.71 SQM, 801-67.17 SQM, 802-83.87 SQM, 803-46.31 SQM, 804-64.93 SQM, 805-42.63 SQM, 806-49.71 SQM, 807-67.17 SQM, 808-83.87 SQM, 809-46.31 SQM, 810-64.93 SQM, 811-42.63 SQM, 812-49.71 SQM, 813-67.17 SQM, 814-83.87 SQM, 815-46.31 SQM, 816-64.93 SQM, 817-42.63 SQM, 818-49.71 SQM, 819-67.17 SQM, 820-83.87 SQM, 821-46.31 SQM, 822-64.93 SQM, 823-42.63 SQM, 824-49.71 SQM, 825-67.17 SQM, 826-83.87 SQM, 827-46.31 SQM, 828-64.93 SQM, 829-42.63 SQM, 830-49.71 SQM, 831-67.17 SQM, 832-83.87 SQM, 833-46.31 SQM, 834-64.93 SQM, 835-42.63 SQM, 836-49.71 SQM, 837-67.17 SQM, 838-83.87 SQM, 839-46.31 SQM, 840-64.93 SQM, 841-42.63 SQM, 842-49.71 SQM, 843-67.17 SQM, 844-83.87 SQM, 845-46.31 SQM, 846-64.93 SQM, 847-42.63 SQM, 848-49.71 SQM, 849-67.17 SQM, 850-83.87 SQM, 851-46.31 SQM, 852-64.93 SQM, 853-42.63 SQM, 854-49.71 SQM, 8