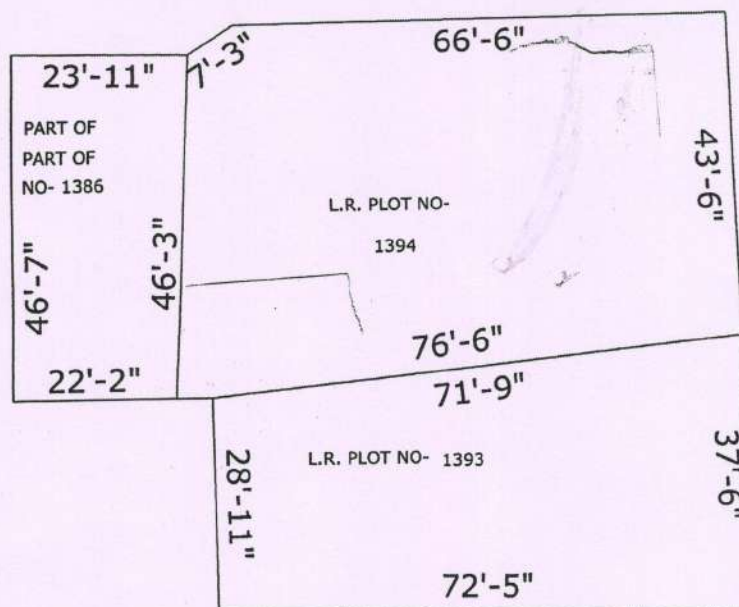


MOUZA- BOLPUR, J.L. NO- 99,  
L.R. PLOT NO -1386 (Part), 1398 & 1393,  
P.S.- BOLPUR, DIST.- BIRBHUM

N

L.R. PLOT NO.	AREA IN SFT.	AREA IN SFT.
1386 (Part)	1068	2.45
1398	3495	8.02
1393	2391	5.48
TOTAL AREA	6954	15.95



*Dayamoy Mondal*  
Civil Engineer (Dip)

Reg. No.- D131492360  
At- Bolpur Super-Market, Stall-73