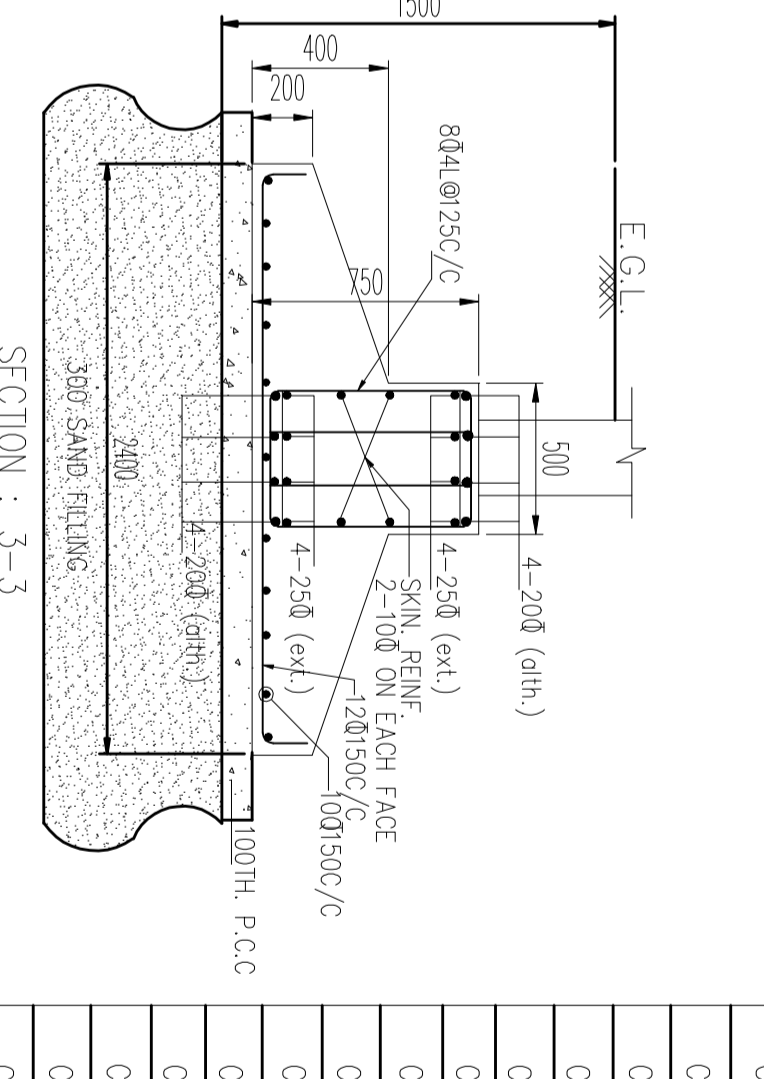
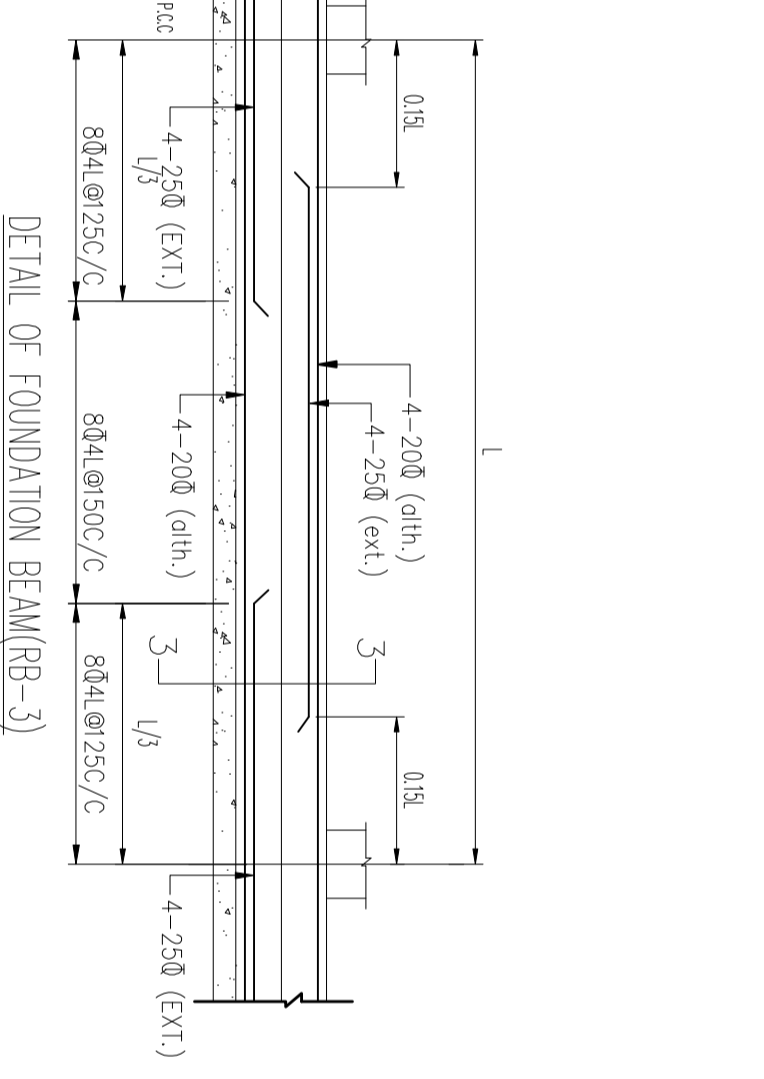
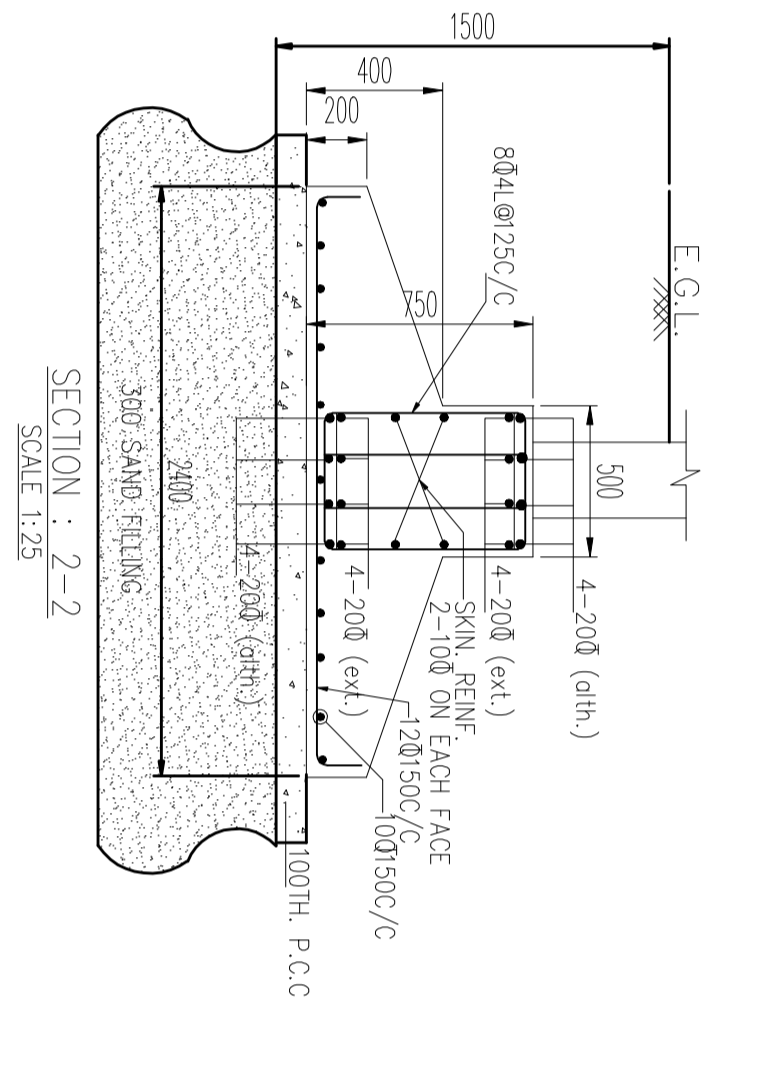
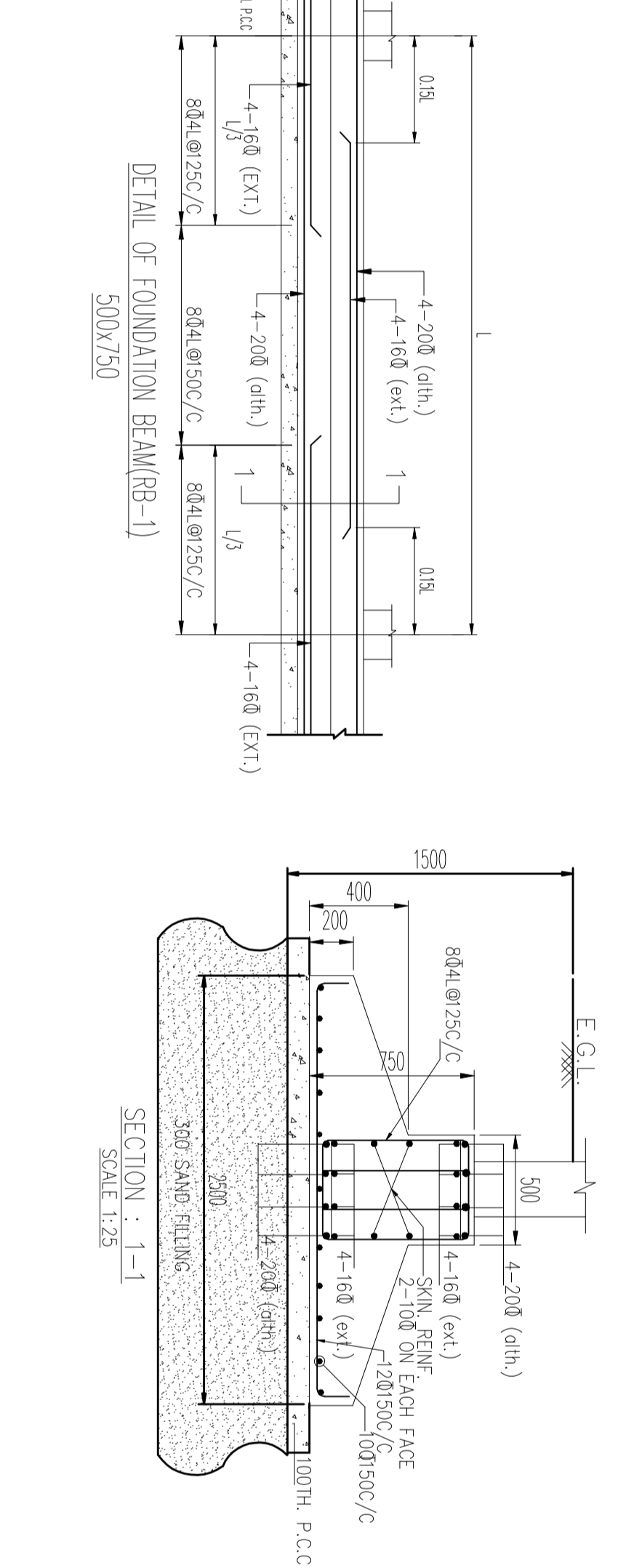
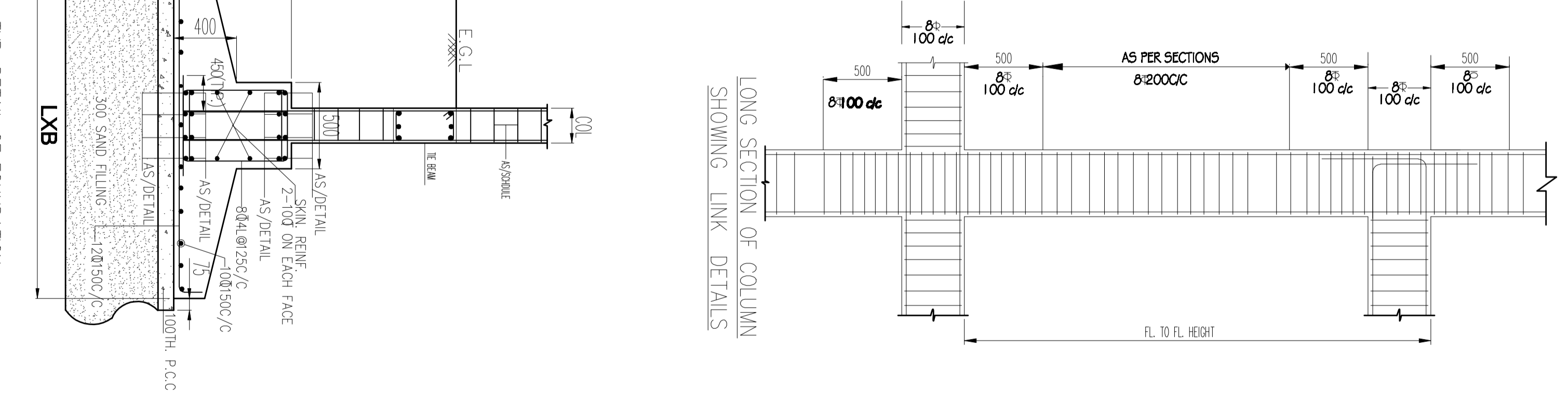
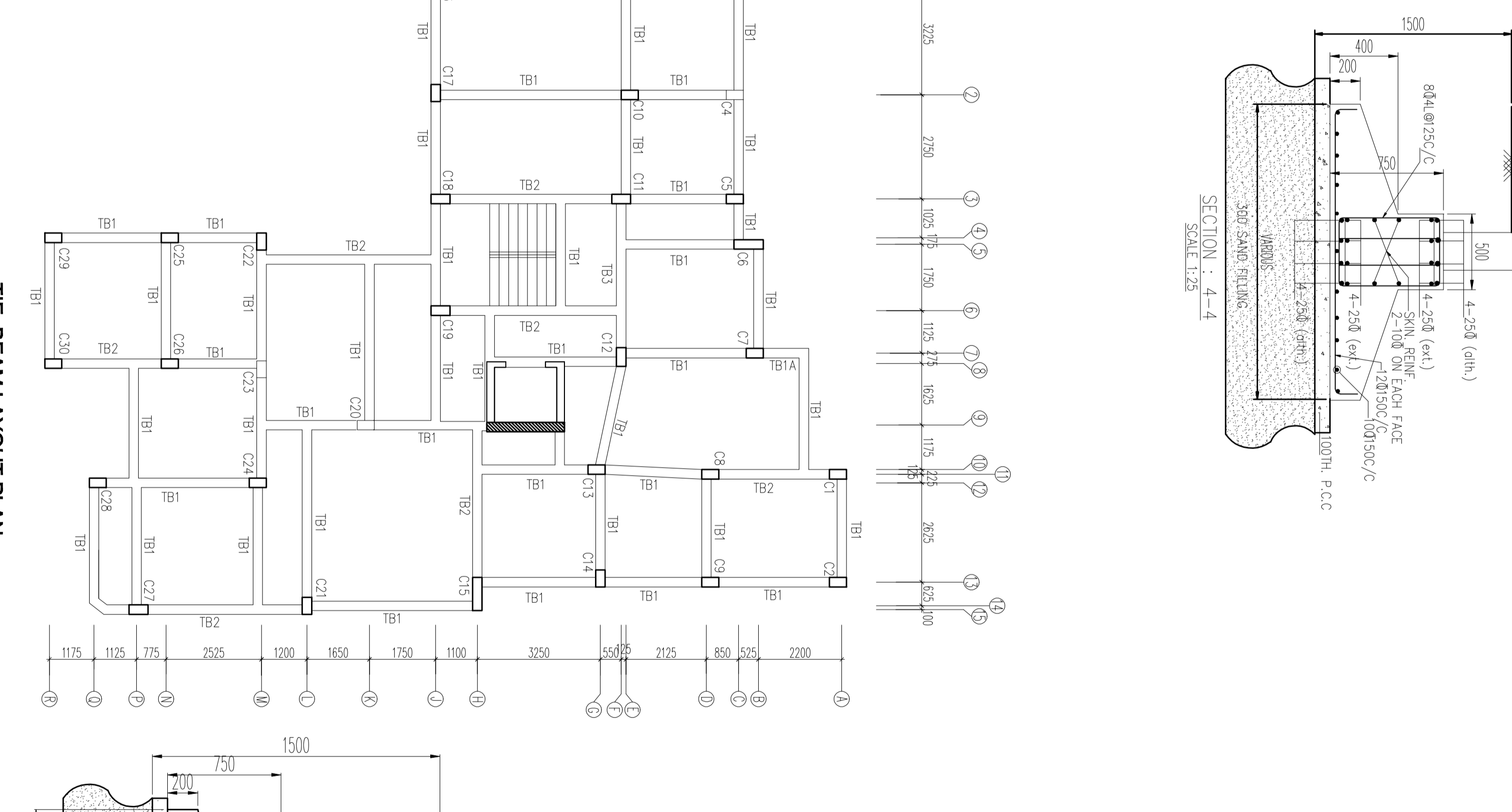
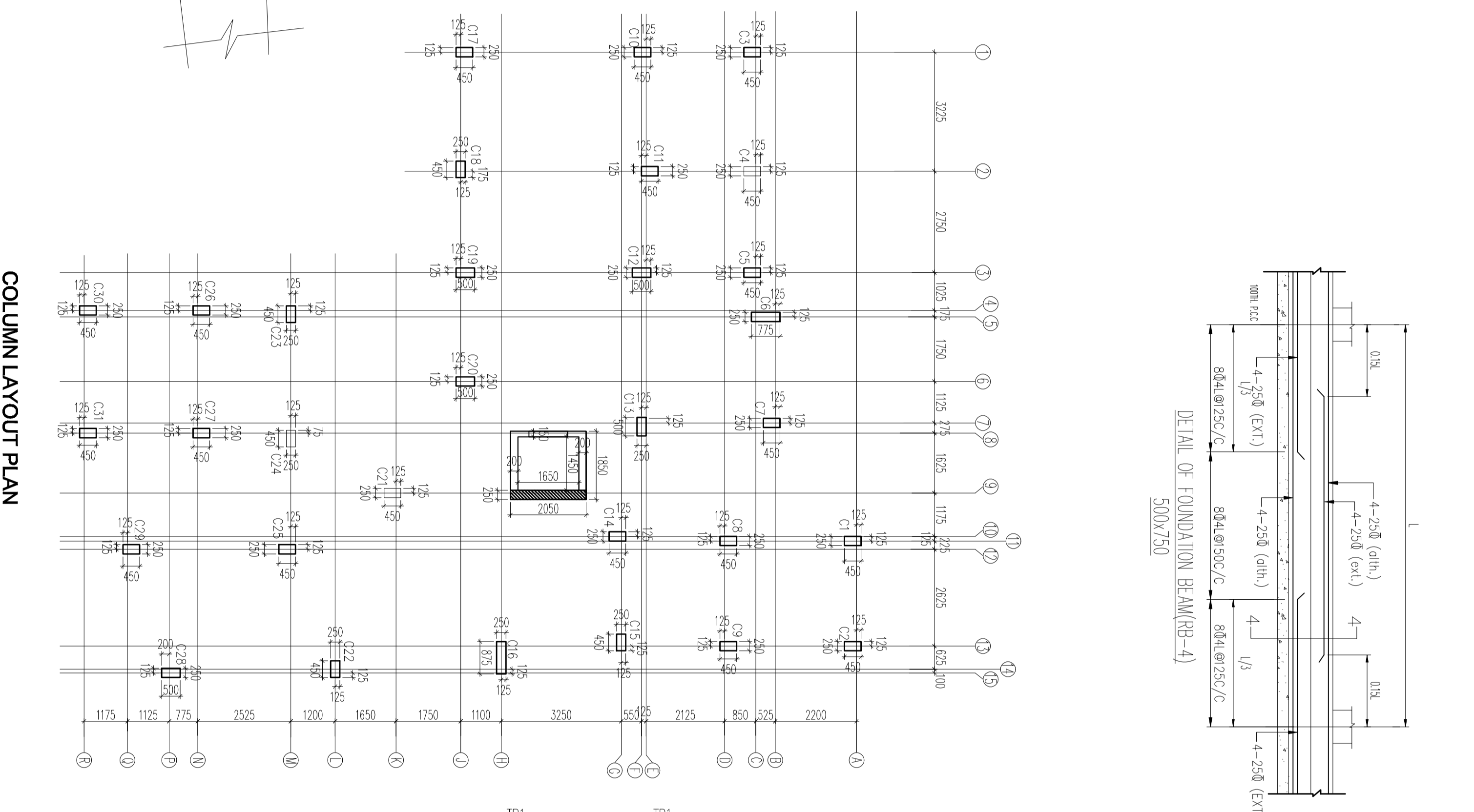
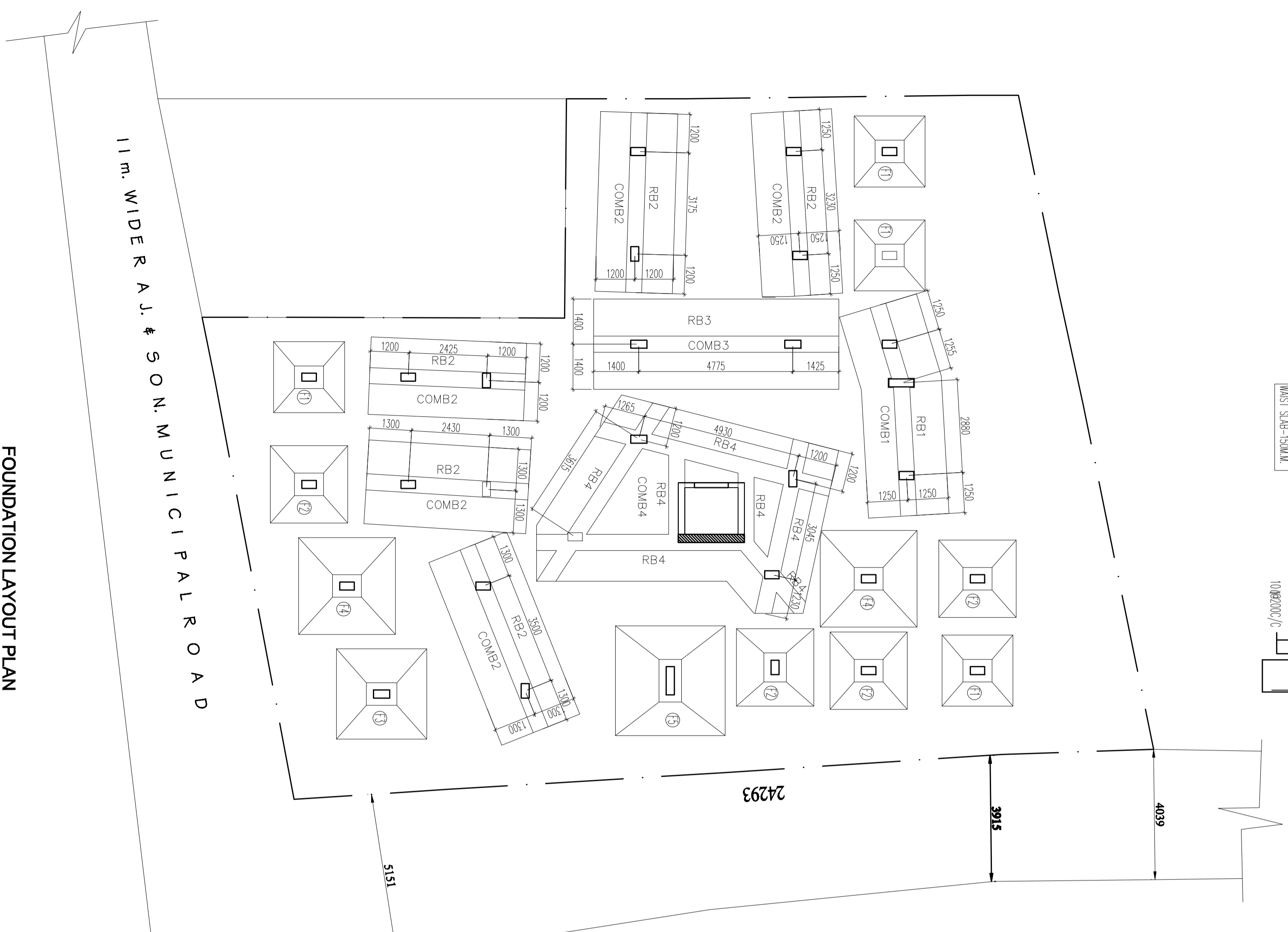


SCHEDULE OF THE BEAM (M20 AND FE 500)		STRUCTURE (E LEVED)	
MEMO SIZE	TOP	BOTT	AT SPAN
TB1 250x450	1-18x2-120T	1-18x2-120T	60T@15mm CC
TB2 250x450	2-180T	2-180T	60T@15mm CC
TB3 250x450	2-18x2-120T	2-18x2-120T	60T@15mm CC

SCHEDULE OF FOUNDATION (M20 AND FE 500)		REINFORCEMENT	
MEMO	SECTION	SECTION	SECTION
F1	2200	2200	2000
F2	2400	2400	2000
F3	2800	2800	2000
F4	3000	3000	2000



SCHEDULE OF COLUMN - (M20 AND FE 500)		FOUNDATION	
MEMO	SECTION	SECTION	SECTION
C1	250x450	6-18x2-124	4-20x4-124
C2	250x450	6-18x2-124	4-20x4-124
C3	250x450	6-18x2-124	4-20x4-124
C4	250x450	6-18x2-124	4-20x4-124
C5	250x450	6-18x2-124	4-20x4-124
C6	250x450	6-18x2-124	4-20x4-124
C7	250x450	6-18x2-124	4-20x4-124
C8	250x450	6-18x2-124	4-20x4-124
C9	250x450	6-18x2-124	4-20x4-124
C10	250x450	6-18x2-124	4-20x4-124
C11	250x450	6-18x2-124	4-20x4-124
C12	250x450	6-18x2-124	4-20x4-124
C13	250x450	6-18x2-124	4-20x4-124
C14	250x450	6-18x2-124	4-20x4-124
C15	250x450	6-18x2-124	4-20x4-124
C16	250x450	6-18x2-124	4-20x4-124
C17	250x450	6-18x2-124	4-20x4-124
C18	250x450	6-18x2-124	4-20x4-124
C19	250x450	6-18x2-124	4-20x4-124
C20	250x450	6-18x2-124	4-20x4-124
C21	250x450	6-18x2-124	4-20x4-124
C22	250x450	6-18x2-124	4-20x4-124
C23	250x450	6-18x2-124	4-20x4-124
C24	250x450	6-18x2-124	4-20x4-124
C25	250x450	6-18x2-124	4-20x4-124
C26	250x450	6-18x2-124	4-20x4-124
C27	250x450	6-18x2-124	4-20x4-124
C28	250x450	6-18x2-124	4-20x4-124
C29	250x450	6-18x2-124	4-20x4-124
C30	250x450	6-18x2-124	4-20x4-124
C31	250x450	6-18x2-124	4-20x4-124



- NOTES: -
1. ALL DIMENSIONS ARE IN MM
 2. CONCRETE GRADE TO BE ADOPTED M20 UNLESS MENTIONED.
 3. USE OF STEEL FE 500
 4. COLUMN TO BE REINFORCED
 5. COLUMN = 30mm, BEAM = 30mm
 6. ALL EXTERNAL WALLS ARE 200mm THK & INTERNAL WALLS ARE 125/75 mm THK.
 7. LEAN CONCRETE (1:3:6) NOMINAL MIX 75 THK SHALL BE PROVIDED OVER FOUNDATION.
 8. EXTERNAL PLASTER 20mm THK IN CONCRETE WATER GRADE (1:4)
 9. INTERNAL PLASTER 20mm THK IN CONCRETE WATER GRADE (1:4)
 10. ALL CEILING PLASTER BEAM THK IN CONCRETE WATER GRADE (1:4)
 11. USE 200MM UP SHEET BELOW P.C.C.
- NOTE: - THE STRUCTURAL DESIGNER IS RESPONSIBLE FOR THE DESIGN ONLY. THE CONSTRUCTION, SUPERVISION FALLS OUTSIDE THE FRAMEWORK OF DESIGNER.