

PROJECT

PLAN PROPOSAL FOR ADDITIONAL ONE FLOOR U/S 394 OF K.M.C. ACT. 1980 OVER AND ABOVE B+G+13 STORIED RESIDENTIAL BUILDING AT PREMISES. NO. - 25, DR. AMBEDKAR SARANI, INCLUDING CHANGES U/R26(2a)(2b); IN MODIFICATION FROM SANCTIONED PLAN VIDE B.P. NO. - 2014070216 DATED - 20.03.2015; P.S. - TOPSIA; UNDER WARD NO. - 059; BR. NO. - VII, KOLKATA-700046.

TITLE:

EXISTING BASEMENT LAYOUT & DETAIL, COLUMN SCHEDULE, TYPICAL DETAIL OF LIFT, TYPICAL DETAIL OF PILE CAP & FOUNDATION BEAM DETAIL & TYPICAL DETAIL OF RETAINING WALL.

NOTES

1. ALL DIMENSIONS ARE IN MM EXCEPT NOTED.
2. GRADE OF CONCRETE M40/M30
3. GRADE OF STEEL Fe500D



SIGNATURE OF OWNER

SHIVMAHIMA DEVELOPERS PVT. LTD.
MANGALDHAM REAL ESTATE PVT. LTD.
SRIDHARA PROPERTIES PVT. LTD.
TILAKRATAN REALTORS PVT. LTD.
SANCHOKI HEIGHTS PVT. LTD.

[Handwritten Signature]

Director

TENTH FLOOR TO TWELVE FLOOR	TWELVE FLOOR TO FOURTEEN FLOOR	FOURTEEN FLOOR TO ROOF
350x650 16-16T (3 SETS+2 OPEN)	350x650 16-16T (3 SETS+2 OPEN)	350x650 16-16T (3 SETS+2 OPEN)
350x750	350x750	350x750
8-20T+8-16T (3 SETS+2 OPEN)	16-16T (3 SETS+2 OPEN)	16-16T (3 SETS+2 OPEN)
400x650	400x650	400x650
16-16T (3 SETS+2 OPEN)	16-16T (3 SETS+2 OPEN)	16-16T (3 SETS+2 OPEN)
400x750	400x750	400x750
16-16T (3 SETS+2 OPEN)	16-16T (3 SETS+2 OPEN)	16-16T (3 SETS+2 OPEN)
375x750	375x750	375x750
16-20T (3 SETS+2 OPEN)	8-20T+8-16T (3 SETS+2 OPEN)	8-20T+8-16T (3 SETS+2 OPEN)
350x750	350x750	350x750
12-20T (3 SETS)	12-16T (3 SETS)	12-16T (3 SETS)
375x900	375x900	375x900
16-20T (3 SETS)	8-20T+8-16T (3 SETS)	8-20T+8-16T (3 SETS)
375x900	375x900	375x900

ACQUISITION RULES 2001 AS AMENDED FROM TIME TO TIME. THE PLOT IS DEMARCATED BY BOUNDARY WALL ON ALL SIDES.



DEBATOSH SAHU

Architect & Urban Designer
M.A.R.C.H. F.I.A. F.I.U.D.I. A.I.I.D.
Regn. No. CA/89/12368

DEBATOSH SAHU (CA/89/12368)

SIGNATURE OF ARCHITECT

STRUCTURAL ENGINEERS' CERTIFICATE

THE STRUCTURAL DESIGN AND DRAWINGS OF BOTH THE FOUNDATION AND SUPERSTRUCTURE OF THE EXISTING B-G+XIII STORED BUILDING AT THE AFORESAID PREMISES CONSTRUCTED AS PER B.P NO. 20140702/10 DATED - 20.03.2014 HAS BEEN MADE AND ALSO SUPERVISED BY ME CONSIDERING ALL POSSIBLE LOADS INCLUDING THE SEISMIC LOAD AS PER THE NATIONAL BUILDING CODE OF INDIA AND CERTIFIED THAT IT IS SAFE AND STABLE IN ALL RESPECTS. IT IS FURTHER CERTIFIED THAT THE SAID STRUCTURE IS CAPABLE OF WITHSTANDING THE ADDITIONAL LOAD FOR ANOTHER TWO FLOORS OVER AND ABOVE THE EXISTING G+XIII STORED BUILDING STANDING ON AT SITE.



BIBEK BIKASH MULLICK

E.S.E. - 1/75

KOLKATA MUNICIPAL CORPORATION

BIBEK BIKASH MULLICK (E.S.E-1/75)

SIGNATURE OF STRUCTURAL ENGINEERS

6-20T+B-16T (3 SETS)	16-16T (3 SETS)	16-16T (3 SETS)	16-16T (3 SETS)
500x600	500x800	500x800	500x800
6-20T+B-16T (3 SETS)	16-16T (3 SETS)	16-16T (3 SETS)	16-16T (3 SETS)
400x750	400x750	400x750	400x750
12-20T (3 SETS)	12-20T (3 SETS)	12-20T (3 SETS)	12-20T (3 SETS)
400x900	400x900	400x900	400x900
6-20T+B-16T (3 SETS)	16-16T (3 SETS)	16-16T (3 SETS)	16-16T (3 SETS)
350x900	350x900	350x900	350x900
12-20T (3 SETS)	12-20T (3 SETS)	12-20T (3 SETS)	12-20T (3 SETS)
350x750	350x750	350x750	350x750
6-20T+4-16T (3 SETS)	12-16T (3 SETS)	12-16T (3 SETS)	12-16T (3 SETS)
400x900	400x900	400x900	400x900
6-20T+B-16T (3 SETS)	16-16T (3 SETS)	16-16T (3 SETS)	16-16T (3 SETS)
600x600	600x600	600x600	600x600
16-20T (3 SETS+2 OPEN)	16-20T (3 SETS+2 OPEN)	16-20T (3 SETS+2 OPEN)	16-20T (3 SETS+2 OPEN)
400x900	400x900	400x900	400x900
6-20T+4-16T (3 SETS)	12-16T (3 SETS)	12-16T (3 SETS)	12-16T (3 SETS)
400x750	400x750	400x750	400x750
6-20T+4-16T (3 SETS)	12-16T (3 SETS)	12-16T (3 SETS)	12-16T (3 SETS)
400x750	400x750	400x750	400x750
16-20T (3 SETS)	16-16T (3 SETS)	16-16T (3 SETS)	16-16T (3 SETS)

ESE-1776 (K.M.C.)
 Signature of Struc. Reviewer
 KOUSHIK SENGUPTA E.S.R.-(1)76/5 (K.M.C.)
 SIGNATURE OF STRUCTURAL REVIEWER

UNDERSIGNED HAS INSPECTED THE SITE AND CARRIED OUT SOIL INVESTIGATION THEREON. IT IS CERTIFIED THAT THE EXISTING SOIL OF THE SITE IS ABLE TO CARRY THE LOAD COMING FROM PROPOSED CONSTRUCTION AND THE FOUNDATION SYSTEM PROPOSED HEREIN IS SAFE AND STABLE IN ALL RESPECT FROM GEO-TECHNICAL POINT OF VIEW.



ALOK ROY
 Empanelled Geotechnical Engineer
 Kolkata Municipal Corporation
 Class-I, No.-G.T/1/11
 6A, Milan Park
 Kolkata-700_084
ALOK ROY
 GTE No. I/11

SIG. OF GEO-TECHNICAL ENGINEER

DESIGNED	REF.
CHECKED - BBM	SCALE : 1:100, 1:25
DEALT - P.p	DATE : 14.03.2020

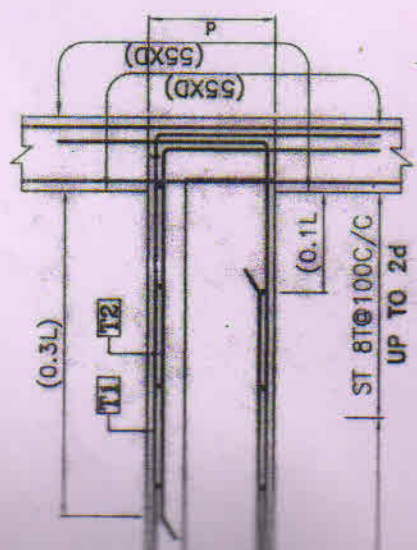
DRG. NO. - PMC/25, DR. AMBEDKAR SARANI/COR/ST/01

STRUCTURAL CONSULTANT

P.M. CONSULTANT
 STRUCTURAL ENGINEERING CONSULTANT
 3A, SIDDHESHWARI ROAD,
 KOLKATA - 700029.
 PHONE- 033-40061123
 WEB: <https://pmcstructure.wixsite.com/pmcon>



16-16T (3 SETS)	16-16T (3 SETS)	16-16T (3 SETS)	16-16T (3 SETS)
400x900	400x900	400x900	400x900
4-20T+12-16T (3 SETS)	4-20T+12-16T (3 SETS)	4-20T+12-16T (3 SETS)	4-20T+12-16T (3 SETS)
400x750	400x750	400x750	400x750
12-16T (3 SETS)	12-16T (3 SETS)	12-16T (3 SETS)	12-16T (3 SETS)
300x750	300x750	300x750	300x750
12-20T (3 SETS)	12-20T (3 SETS)	12-20T (3 SETS)	12-20T (3 SETS)
300x750	300x750	300x750	300x750
12-16T (3 SETS)	12-16T (3 SETS)	12-16T (3 SETS)	12-16T (3 SETS)
300x750	300x750	300x750	300x750
4-20T+12-16T (3 SETS)	4-20T+12-16T (3 SETS)	4-20T+12-16T (3 SETS)	4-20T+12-16T (3 SETS)
300x750	300x750	300x750	300x750
---	---	---	---

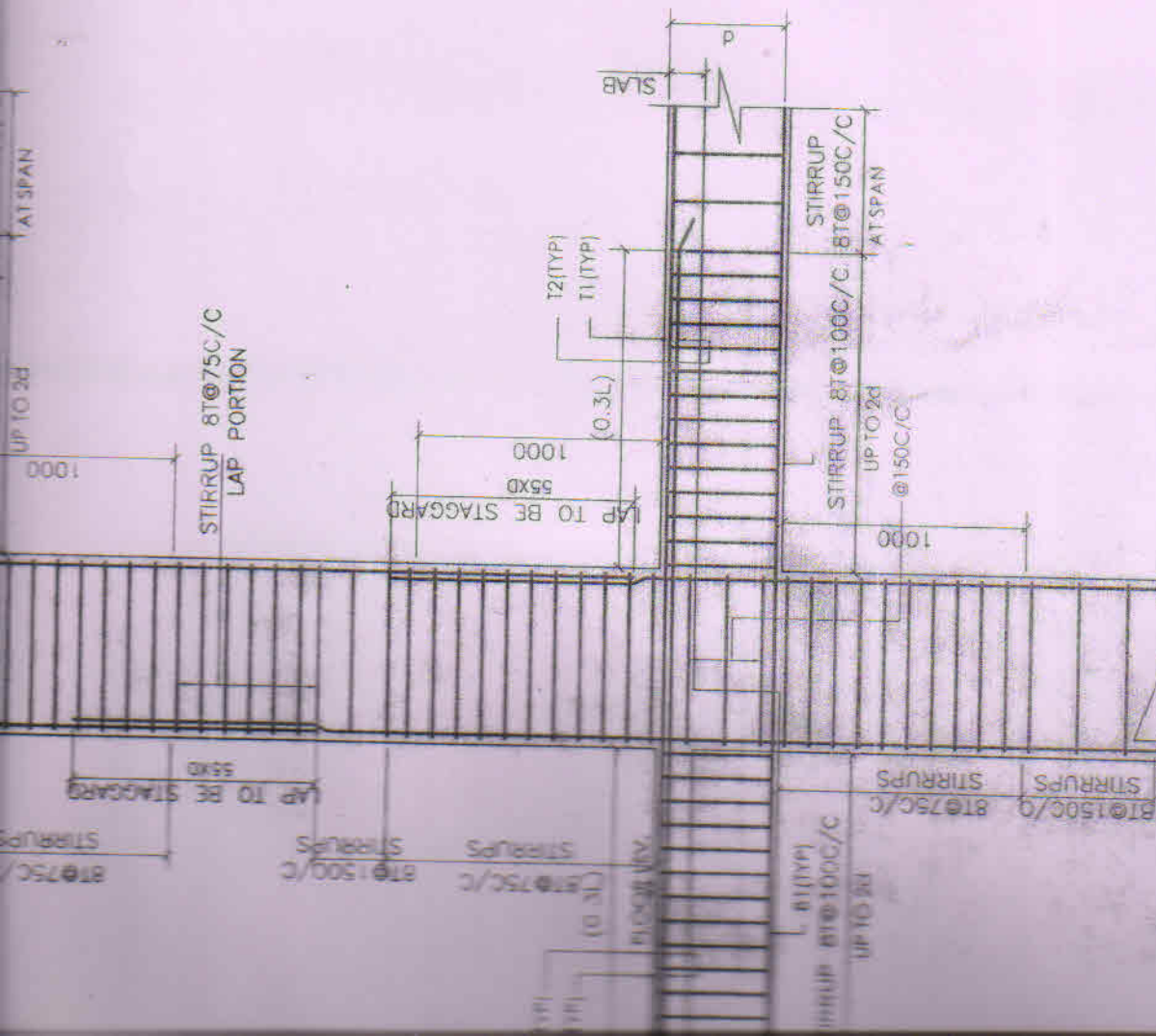


T2 (TYP)
 T1 (TYP)

SLAB

SPACE

35-A, DR. SARAT BANERJEE ROAD, KOLKATA-700029
Telefax : 91-33-2465-4130 / 4159
e-mail : espace@vsnl.net
WEBSITE : www.espaceindia.com

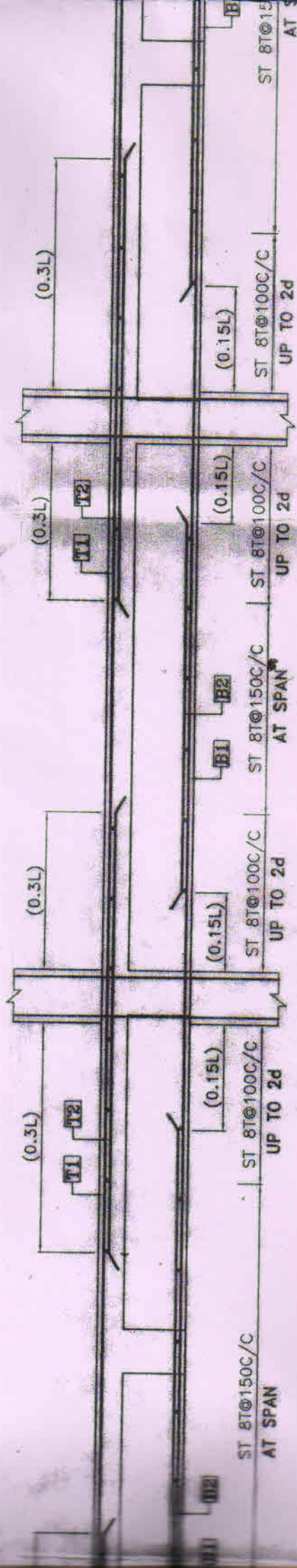


DET. OF INTERNAL
BEAM-COLUMN JUNCTION
SCALE-N/E

FIRST FLOOR TO GROUND FLOOR	GROUND FLOOR TO SECOND FLOOR	SECOND FLOOR TO FOURTH FLOOR	FOURTH FLOOR TO SIXTH FLOOR	SIXTH FLOOR TO EIGHTH FLOOR	EIGHTH FLOOR TO TENTH FLOOR
400x750	400x750	350x650	350x650	350x650	350x650
16-25T (3 SETS+2 OPEN)	16-25T (3 SETS+2 OPEN)	8-25T+8-20T (3 SETS+2 OPEN)	16-20T (3 SETS+2 OPEN)	16-20T (3 SETS+2 OPEN)	8-20T+8-16T (3 SETS+2 OPEN)
400x750	400x750	350x750	350x750	350x750	350x750
16-25T (3 SETS+2 OPEN)	16-25T (3 SETS+2 OPEN)	8-25T+8-20T (3 SETS+2 OPEN)	16-20T (3 SETS+2 OPEN)	16-20T (3 SETS+2 OPEN)	16-20T (3 SETS+2 OPEN)
400x750	400x750	400x650	400x650	400x650	400x650
4-32T+12-25T (3 SETS+2 OPEN)	4-32T+12-25T (3 SETS+2 OPEN)	16-25T (3 SETS+2 OPEN)	8-25T+8-20T (3 SETS+2 OPEN)	16-20T (3 SETS+2 OPEN)	8-20T+8-16T (3 SETS+2 OPEN)
400x750	400x750	400x750	400x750	400x750	400x750
4-32T+12-25T (3 SETS+2 OPEN)	4-32T+12-25T (3 SETS+2 OPEN)	16-25T (3 SETS+2 OPEN)	8-25T+8-20T (3 SETS+2 OPEN)	16-20T (3 SETS+2 OPEN)	8-20T+8-16T (3 SETS+2 OPEN)
400x750	400x750	375x750	375x750	375x750	375x750
16-25T (3 SETS+2 OPEN)	16-25T (3 SETS+2 OPEN)	16-25T (3 SETS+2 OPEN)	8-25T+8-20T (3 SETS+2 OPEN)	4-25T+12-20T (3 SETS+2 OPEN)	16-20T (3 SETS+2 OPEN)
400x750	400x750	350x750	350x750	350x750	350x750
12-25T (3 SETS)	12-25T (3 SETS)	8-25T+4-20T (3 SETS)	4-25T+8-20T (3 SETS)	4-25T+8-20T (3 SETS)	12-20T (3 SETS)
375x750	375x750	350x750	350x750	350x750	350x750
4-32T+8-25T (3 SETS)	4-32T+8-25T (3 SETS)	12-25T (3 SETS)	12-25T (3 SETS)	8-25T+4-20T (3 SETS)	4-25T+8-20T (3 SETS)
375x900	375x900	375x900	375x900	375x900	375x900
4-32T+12-25T (3 SETS)	4-32T+12-25T (3 SETS)	16-25T (3 SETS)	8-25T+8-20T (3 SETS)	4-25T+12-20T (3 SETS)	16-20T (3 SETS)
375x900	375x900	375x900	375x900	375x900	375x900

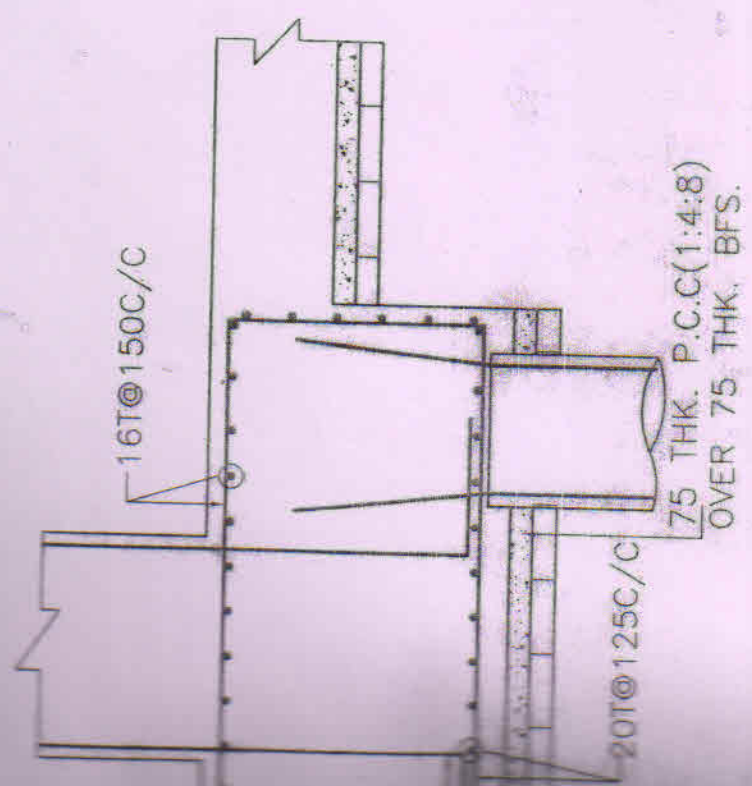
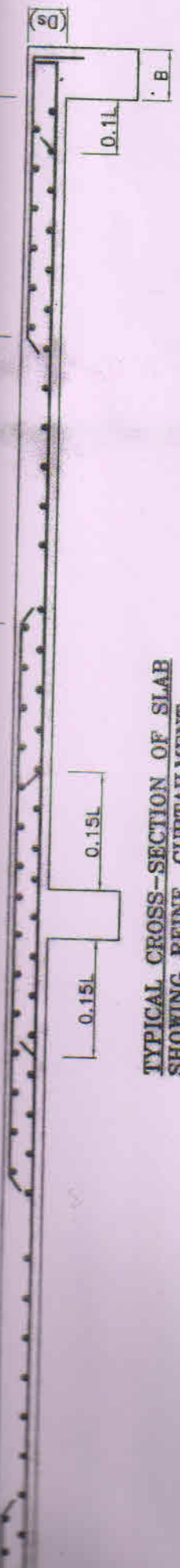
500x600	500x600	500x600	500x600	500x600	500x600	500x600
16-25T (3 SETS)	16-25T (3 SETS)	16-25T (3 SETS)	16-25T (3 SETS)	16-25T (3 SETS)	16-25T (3 SETS)	16-20T (3 SETS)
400x750	400x750	400x750	400x750	400x750	400x750	400x750
12-25T (3 SETS)	12-25T (3 SETS)	12-25T (3 SETS)	8-25T+4-20T (3 SETS)	8-25T+4-20T (3 SETS)	4-25T+8-20T (3 SETS)	4-25T+8-20T (3 SETS)
400x900	400x900	400x900	400x900	400x900	400x900	400x900
16-25T (3 SETS)	16-25T (3 SETS)	16-25T (3 SETS)	16-25T (3 SETS)	8-25T+8-20T (3 SETS)	4-25T+12-20T (3 SETS)	16-20T (3 SETS)
400x900	400x900	400x900	350x800	350x800	350x800	350x900
12-25T (3 SETS)	12-25T (3 SETS)	12-25T (3 SETS)	8-25T+4-20T (3 SETS)	8-25T+4-20T (3 SETS)	4-25T+8-20T (3 SETS)	4-25T+8-20T (3 SETS)
400x900	400x750	400x750	400x900	350x750	350x750	350x750
16-25T (3 SETS)	16-25T (3 SETS)	16-25T (3 SETS)	8-25T+4-20T (3 SETS)	8-25T+8-20T (3 SETS)	12-20T (3 SETS)	12-20T (3 SETS)
600x600	600x600	600x600	600x600	600x600	600x600	600x600
12-25T+4-20T (3 SETS+2 OPEN)	12-25T+4-20T (3 SETS+2 OPEN)	12-25T+4-20T (3 SETS+2 OPEN)	8-25T+8-20T (3 SETS)	8-25T+8-20T (3 SETS)	4-25T+12-20T (3 SETS)	16-20T (3 SETS)
400x800	400x800	400x800	400x800	400x800	400x800	400x800
12-25T (3 SETS)	8-25T+4-20T (3 SETS)	8-25T+4-20T (3 SETS)	8-25T+4-20T (3 SETS)	4-25T+8-20T (3 SETS)	12-20T (3 SETS)	12-20T (3 SETS)
400x750	400x750	400x750	400x750	400x750	400x750	400x750
12-25T (3 SETS)	4-25T+8-20T (3 SETS)	4-25T+8-20T (3 SETS)	4-25T+8-20T (3 SETS)	12-20T (3 SETS)	12-20T (3 SETS)	12-20T (3 SETS)
400x750	400x750	400x750	400x750	400x750	400x750	400x750
4-32T+12-25T (3 SETS)	4-32T+12-25T (3 SETS)	4-32T+12-25T (3 SETS)	4-32T+12-25T (3 SETS)	16-25T (3 SETS)	8-25T+8-20T (3 SETS)	4-25T+12-20T (3 SETS)
400x900	400x900	400x900	400x900	400x900	400x900	400x900
4-32T+12-25T	4-32T+12-25T	4-32T+12-25T	4-32T+12-25T	16-25T	8-25T+8-20T	4-25T+12-20T

16-25T (3 SETS)	400x900	16-25T (3 SETS)	8-25T+8-20T (3 SETS)	16-20T (3 SETS)	16-20T (3 SETS)
400x900	400x900	400x900	400x900	400x900	400x900
16-25T (3 SETS)	400x750	16-25T (3 SETS)	8-25T+8-20T (3 SETS)	4-25T+12-20T (3 SETS)	16-20T (3 SETS)
400x750	400x750	400x750	400x750	400x750	400x750
12-25T (3 SETS)	400x750	8-25T+4-20T (3 SETS)	4-25T+8-20T (3 SETS)	12-20T (3 SETS)	12-20T (3 SETS)
400x750	400x750	300x750	300x750	300x750	300x750
12-25T (3 SETS)	400x750	8-25T+4-20T (3 SETS)	8-25T+4-20T (3 SETS)	4-25T+8-20T (3 SETS)	4-25T+8-20T (3 SETS)
400x750	400x750	300x750	300x750	300x750	300x750
4-32T+8-25T (3 SETS+2 OPEN)	400x750	4-32T+8-25T (3 SETS+2 OPEN)	12-25T (3 SETS+2 OPEN)	8-25T+4-20T (3 SETS+2 OPEN)	4-25T+8-20T (3 SETS+2 OPEN)
400x750	400x750	400x750	300x750	300x750	300x750
8-25T+8-20T (3 SETS)	400x750	8-25T+8-20T (3 SETS)	4-25T+12-20T (3 SETS)	4-25T+12-20T (3 SETS)	16-20T (3 SETS)
350x350	350x350	350x350	350x350	350x350	350x350
8-20T (3 SETS)	8-20T (3 SETS)	8-20T (3 SETS)	8-20T (3 SETS)	8-20T (3 SETS)	8-20T (3 SETS)
M40	M30	M40	M30	M40	M30

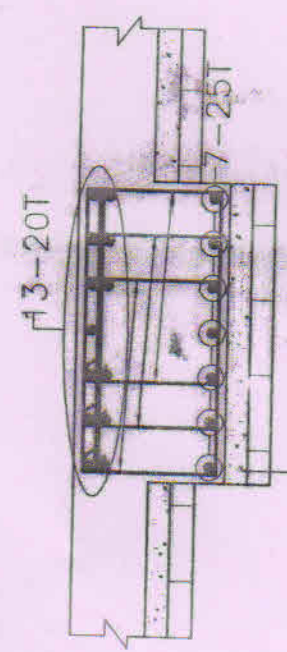


TYPICAL REINFORCEMENT ARRANGEMENT OF CONTINUOUS BEAM
(SCALE-NTS)

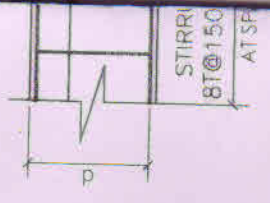
**TYPICAL CROSS-SECTION OF SLAB
SHOWING REINF. CURTAILMENT**



TYPICAL DETAIL OF PILE CAP



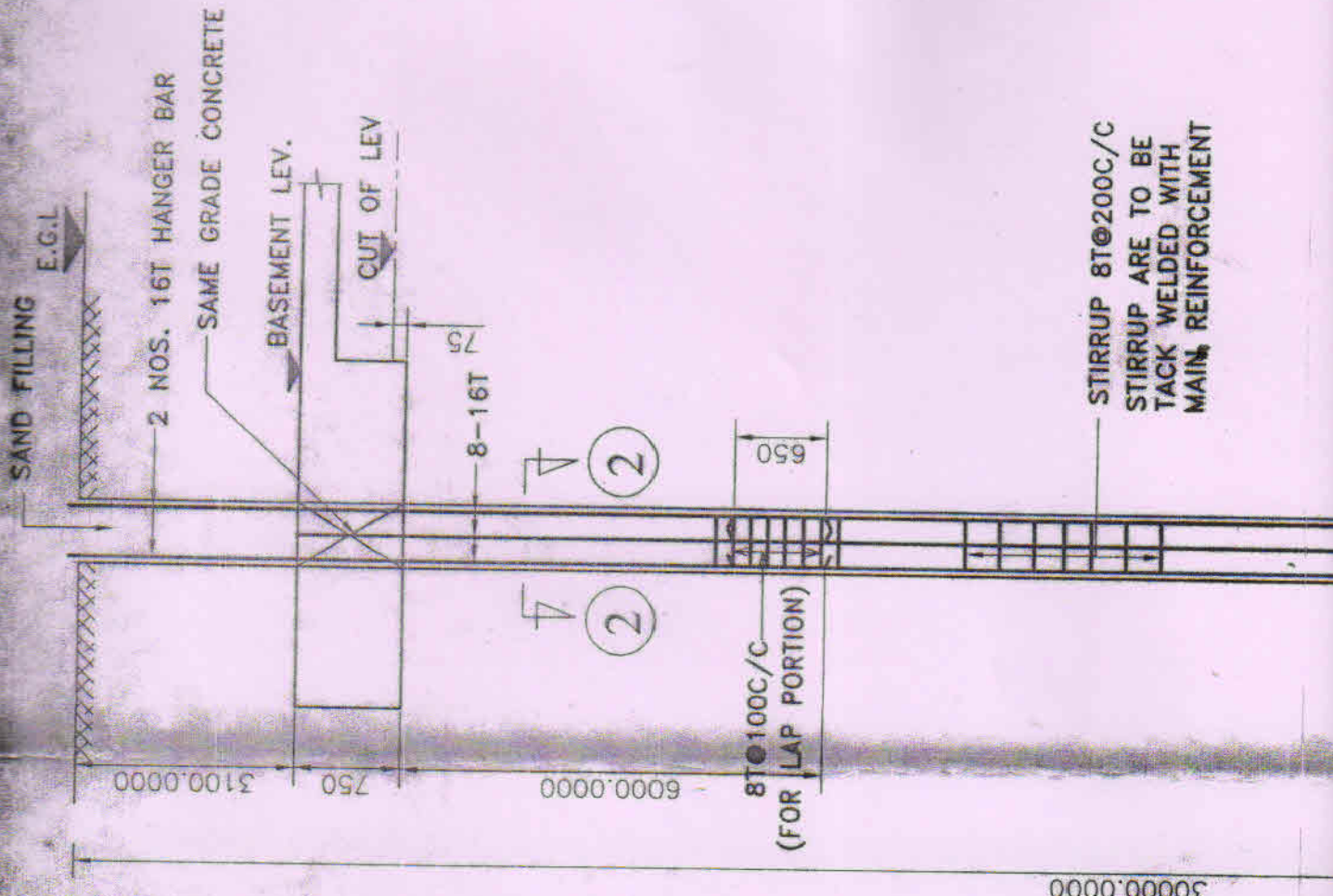
**TYPICAL DETAIL OF FOUNDATION
BEAM(1000X500)**



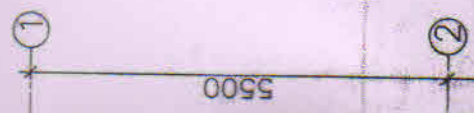
STIRRI
8T@150
ATSF

COLUMN SCHEDULE

COLUMN MKD.
C2
C3,C4
C6
C7
C8
C9,C10
C11
C12
C13,C14

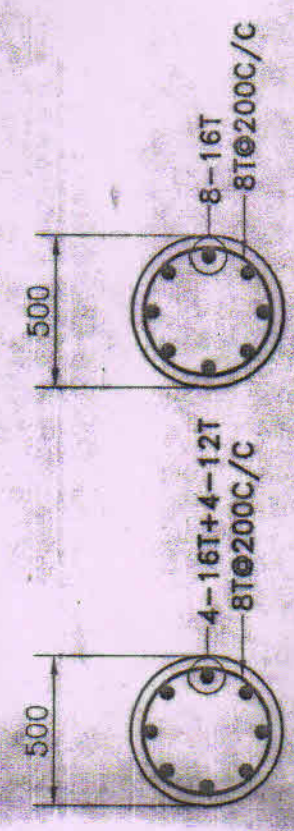
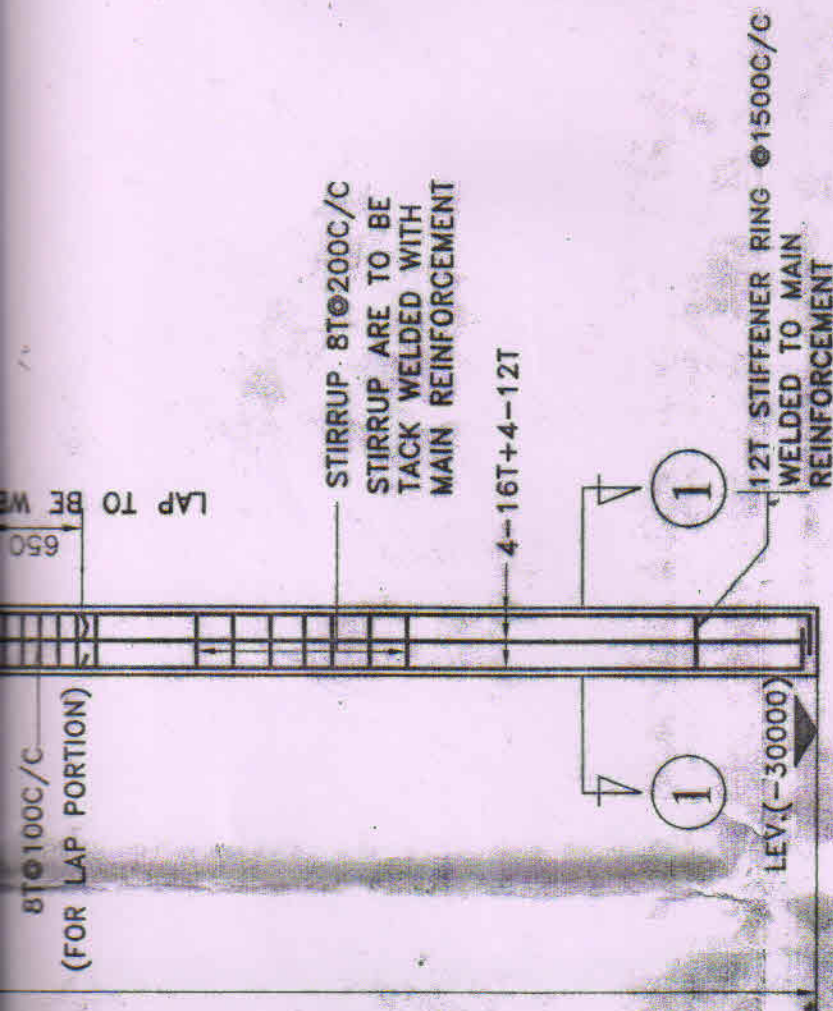


STIRRUP 8@200C/C
STIRRUP ARE TO BE
TACK WELDED WITH
MAIN REINFORCEMENT



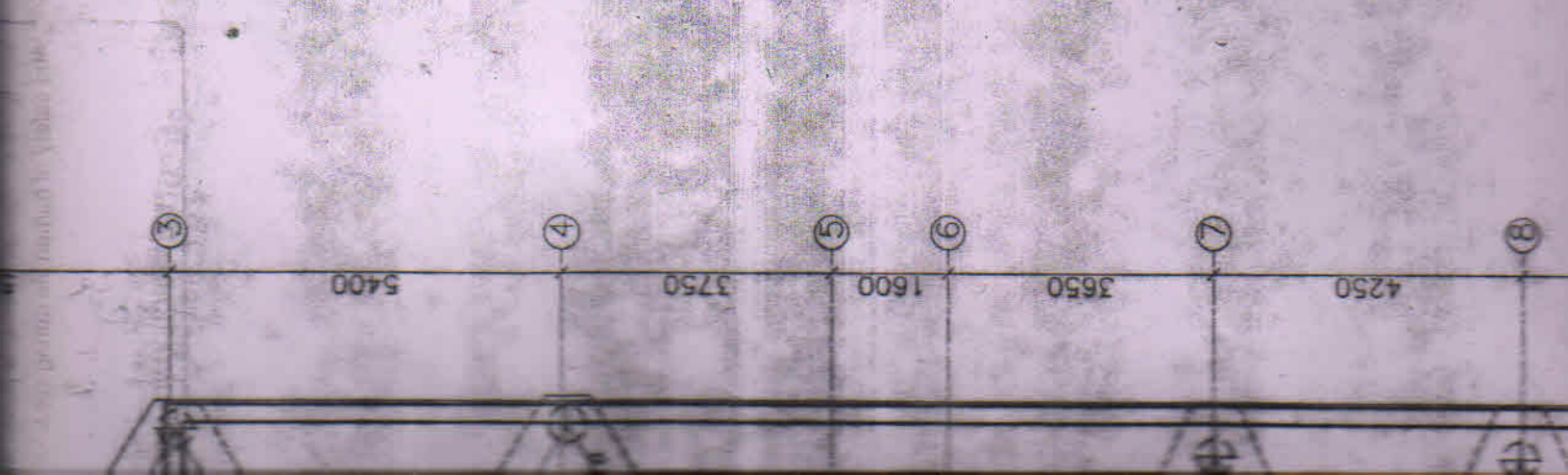
Handwritten notes and stamps at the bottom of the page, including a circular stamp with the number 2.

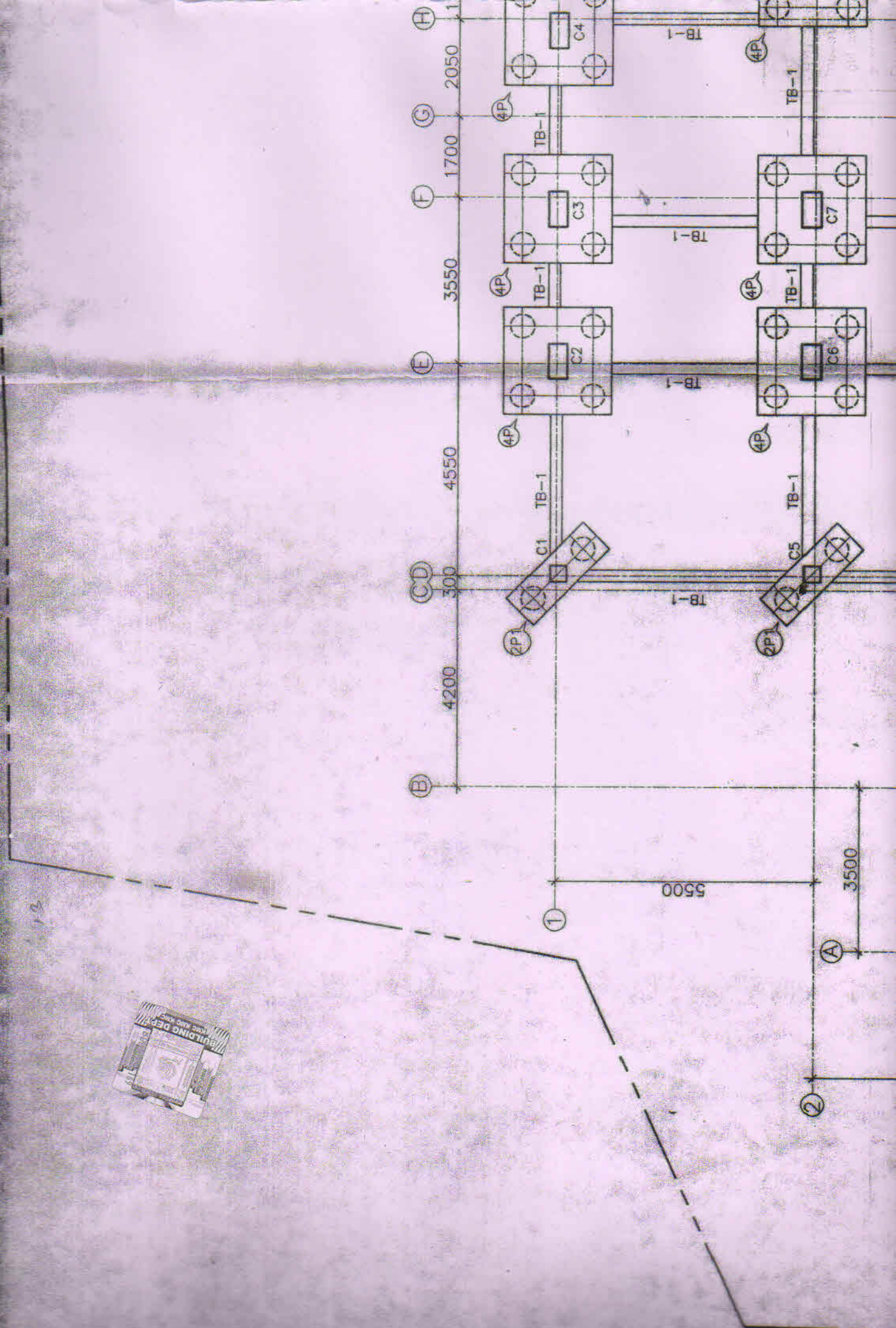
C15,C21
C16,C17,C19,C20
C18
C22
C23
C24
C26
C25
C27
C28
C29

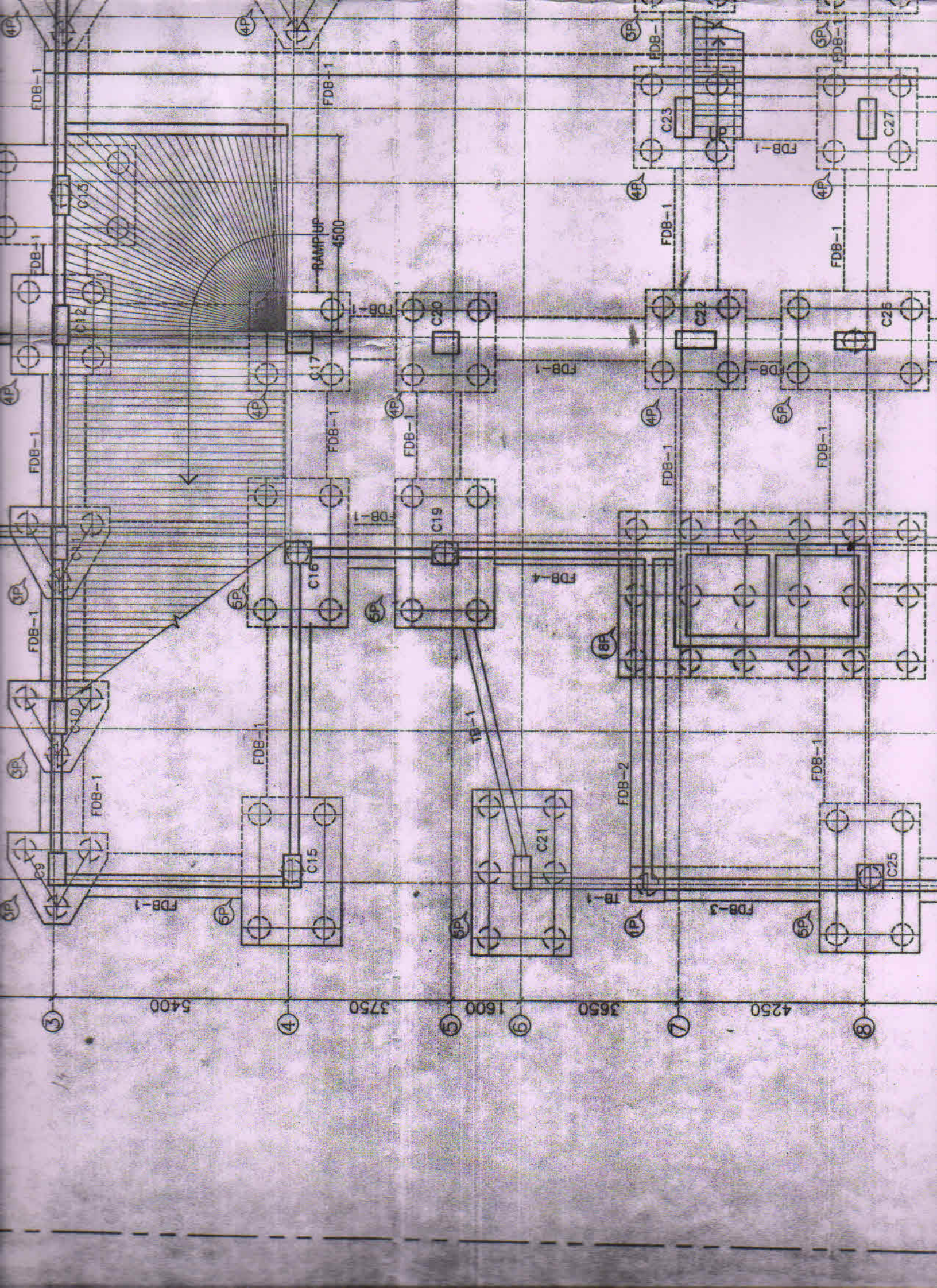


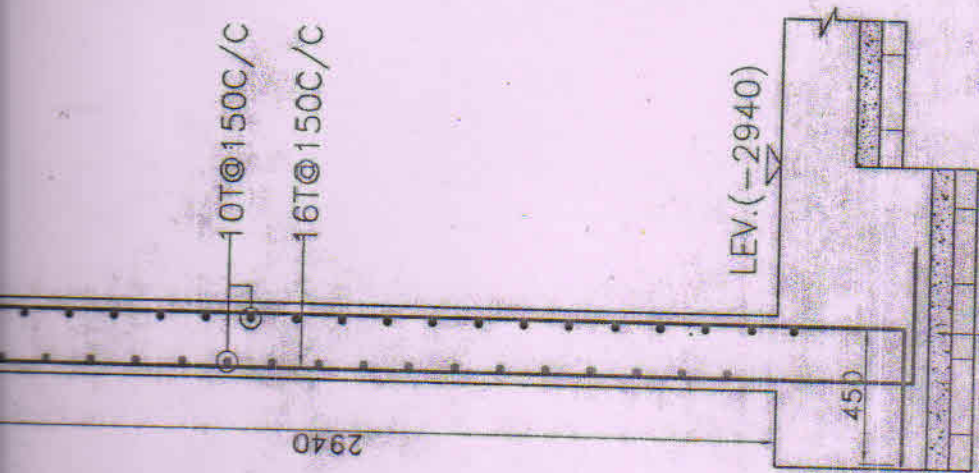
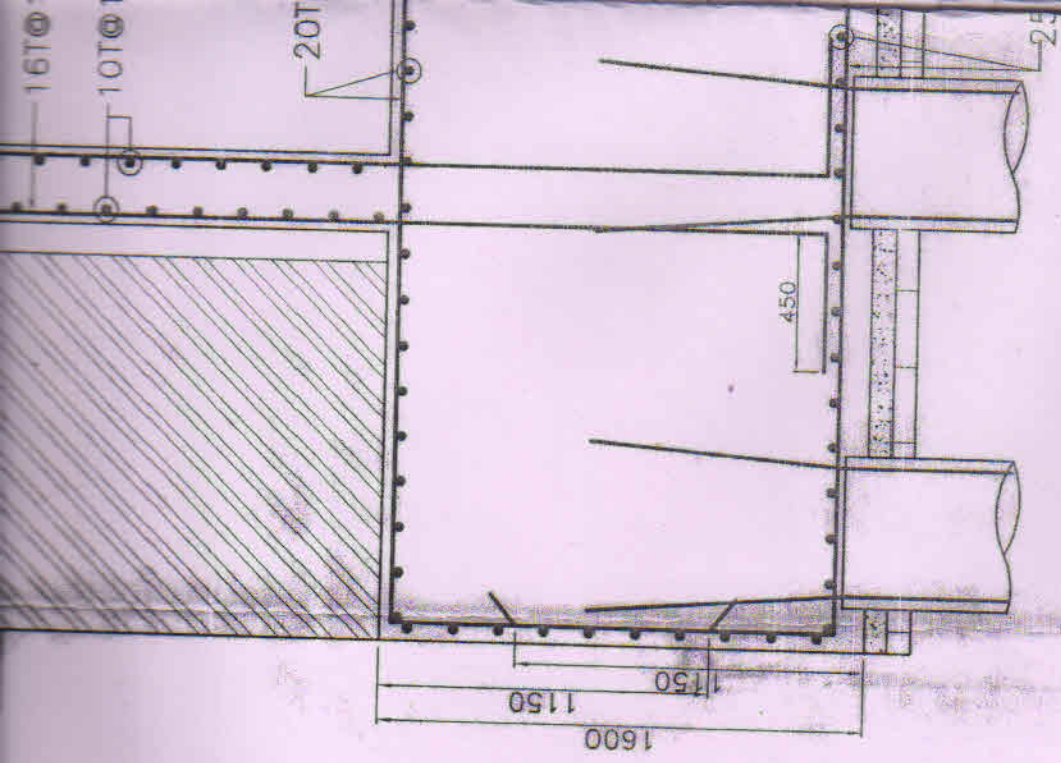
SEC. THROUGH 1-1 SEC. THROUGH 2-2

DETAILS OF 500 ϕ VERTICAL
CAST IN SITU BORED PILE(P)(DMC)
CAPACITY-90T
SLUMP - 150MM-180MM









75 THK. P.C.C (1:4:8)
OVER 75 THK. BFS.

TYPICAL DETAIL OF RETAINING WALL