

**SCHEDULE OF TYPICAL FLOOR BEAM & TIE BEAM:-**

BEAM MKD.	BEAM SIZE (MM X MM)	AT THROUGH MAIN REINFORCEMENT	EXTRA REINFORCEMENT	STIRRUPS
B1	200X300	2-18	2-6	8 @ 21 @ 125 C/C (SUPP)
B2	200X300	2-18	2-6	8 @ 21 @ 125 C/C (SUPP)
B3	200X300	3-18	2-6	8 @ 21 @ 125 C/C (SUPP)
B4	200X300	3-20	2-20	8 @ 21 @ 125 C/C
B5	150X200	3-12	3-12	8 @ 21 @ 125 C/C
B6	200X300	3-16	3-16	8 @ 21 @ 125 C/C

FOR BEAM EXTRA TOP BARS AT SUPPORT ARE EXTENDED UP TO 4L AND EXTRA BOTTOM BARS AT SUPPORT ARE CIRCULATED AT 1/3 FROM SUPPORT WHERE L IS SPAN OF THE BEAM. FOR BEAM COVER TO BE PROVIDED 25 MM AT BOTTOM AND 15 MM AT TOP.

**COLUMN SCHEDULE**

NAME	COL. GROUP	COL. SIZE	FOUNDATION LEV. TO FOUNDATION LEV.	FROM 2ND FLOOR LEV. TO ROOF LEV.	LATERAL TIES
C1, C2, C3, C4, C5, C6, C7, C8, C9, C10, C11, C12, C13, C14, C15, C16, C17, C18, C19, C20	CG-1	300X300	250	1800-207	2 @ 150 C/C
C21, C22, C23, C24, C25, C26, C27, C28, C29, C30, C31, C32, C33, C34, C35, C36, C37, C38, C39, C40, C41, C42, C43, C44, C45, C46, C47, C48, C49, C50	CG-2	200X200	250	1800-207	2 @ 150 C/C
C51, C52, C53, C54, C55, C56, C57, C58, C59, C60, C61, C62, C63, C64, C65, C66, C67, C68, C69, C70, C71, C72, C73, C74, C75, C76, C77, C78, C79, C80, C81, C82, C83, C84, C85, C86, C87, C88, C89, C90, C91, C92, C93, C94, C95, C96, C97, C98, C99, C100	CG-3	150X150	250	1800-207	2 @ 150 C/C
C101, C102, C103, C104, C105, C106, C107, C108, C109, C110, C111, C112, C113, C114, C115, C116, C117, C118, C119, C120	CG-4	150X150	250	1800-207	2 @ 150 C/C

**SCHEDULE OF FOUNDATION:-**

MKD.	UNDER COLS.	SIZE OF FOOTING (MM)	THICKNESS (MM)	SIZE OF REBAR	REINFORCEMENT
F1	CG1, CG2, CG3, CG4, CG5, CG6, CG7, CG8, CG9, CG10, CG11, CG12, CG13, CG14, CG15, CG16, CG17, CG18, CG19, CG20, CG21, CG22, CG23, CG24, CG25, CG26, CG27, CG28, CG29, CG30, CG31, CG32, CG33, CG34, CG35, CG36, CG37, CG38, CG39, CG40, CG41, CG42, CG43, CG44, CG45, CG46, CG47, CG48, CG49, CG50, CG51, CG52, CG53, CG54, CG55, CG56, CG57, CG58, CG59, CG60, CG61, CG62, CG63, CG64, CG65, CG66, CG67, CG68, CG69, CG70, CG71, CG72, CG73, CG74, CG75, CG76, CG77, CG78, CG79, CG80, CG81, CG82, CG83, CG84, CG85, CG86, CG87, CG88, CG89, CG90, CG91, CG92, CG93, CG94, CG95, CG96, CG97, CG98, CG99, CG100	3000X3000	500	12-18 MM	18 MM TOR @ 150 MM C/C
F2	CG21, CG22, CG23, CG24, CG25, CG26, CG27, CG28, CG29, CG30, CG31, CG32, CG33, CG34, CG35, CG36, CG37, CG38, CG39, CG40, CG41, CG42, CG43, CG44, CG45, CG46, CG47, CG48, CG49, CG50, CG51, CG52, CG53, CG54, CG55, CG56, CG57, CG58, CG59, CG60, CG61, CG62, CG63, CG64, CG65, CG66, CG67, CG68, CG69, CG70, CG71, CG72, CG73, CG74, CG75, CG76, CG77, CG78, CG79, CG80, CG81, CG82, CG83, CG84, CG85, CG86, CG87, CG88, CG89, CG90, CG91, CG92, CG93, CG94, CG95, CG96, CG97, CG98, CG99, CG100	3000X3000	500	12-18 MM	18 MM TOR @ 150 MM C/C
F3	CG41, CG42, CG43, CG44, CG45, CG46, CG47, CG48, CG49, CG50, CG51, CG52, CG53, CG54, CG55, CG56, CG57, CG58, CG59, CG60, CG61, CG62, CG63, CG64, CG65, CG66, CG67, CG68, CG69, CG70, CG71, CG72, CG73, CG74, CG75, CG76, CG77, CG78, CG79, CG80, CG81, CG82, CG83, CG84, CG85, CG86, CG87, CG88, CG89, CG90, CG91, CG92, CG93, CG94, CG95, CG96, CG97, CG98, CG99, CG100	3000X3000	400	12-18 MM	18 MM TOR @ 150 MM C/C
F4	CG41, CG42, CG43, CG44, CG45, CG46, CG47, CG48, CG49, CG50, CG51, CG52, CG53, CG54, CG55, CG56, CG57, CG58, CG59, CG60, CG61, CG62, CG63, CG64, CG65, CG66, CG67, CG68, CG69, CG70, CG71, CG72, CG73, CG74, CG75, CG76, CG77, CG78, CG79, CG80, CG81, CG82, CG83, CG84, CG85, CG86, CG87, CG88, CG89, CG90, CG91, CG92, CG93, CG94, CG95, CG96, CG97, CG98, CG99, CG100	3000X3000	500	12-18 MM	18 MM TOR @ 150 MM C/C
F5	CG41, CG42, CG43, CG44, CG45, CG46, CG47, CG48, CG49, CG50, CG51, CG52, CG53, CG54, CG55, CG56, CG57, CG58, CG59, CG60, CG61, CG62, CG63, CG64, CG65, CG66, CG67, CG68, CG69, CG70, CG71, CG72, CG73, CG74, CG75, CG76, CG77, CG78, CG79, CG80, CG81, CG82, CG83, CG84, CG85, CG86, CG87, CG88, CG89, CG90, CG91, CG92, CG93, CG94, CG95, CG96, CG97, CG98, CG99, CG100	3000X3000	500	12-18 MM	18 MM TOR @ 150 MM C/C
F6	CG41, CG42, CG43, CG44, CG45, CG46, CG47, CG48, CG49, CG50, CG51, CG52, CG53, CG54, CG55, CG56, CG57, CG58, CG59, CG60, CG61, CG62, CG63, CG64, CG65, CG66, CG67, CG68, CG69, CG70, CG71, CG72, CG73, CG74, CG75, CG76, CG77, CG78, CG79, CG80, CG81, CG82, CG83, CG84, CG85, CG86, CG87, CG88, CG89, CG90, CG91, CG92, CG93, CG94, CG95, CG96, CG97, CG98, CG99, CG100	3000X3000	500	12-18 MM	18 MM TOR @ 150 MM C/C
F7	CG41, CG42, CG43, CG44, CG45, CG46, CG47, CG48, CG49, CG50, CG51, CG52, CG53, CG54, CG55, CG56, CG57, CG58, CG59, CG60, CG61, CG62, CG63, CG64, CG65, CG66, CG67, CG68, CG69, CG70, CG71, CG72, CG73, CG74, CG75, CG76, CG77, CG78, CG79, CG80, CG81, CG82, CG83, CG84, CG85, CG86, CG87, CG88, CG89, CG90, CG91, CG92, CG93, CG94, CG95, CG96, CG97, CG98, CG99, CG100	3000X3000	400	12-18 MM	18 MM TOR @ 150 MM C/C
F8	CG41, CG42, CG43, CG44, CG45, CG46, CG47, CG48, CG49, CG50, CG51, CG52, CG53, CG54, CG55, CG56, CG57, CG58, CG59, CG60, CG61, CG62, CG63, CG64, CG65, CG66, CG67, CG68, CG69, CG70, CG71, CG72, CG73, CG74, CG75, CG76, CG77, CG78, CG79, CG80, CG81, CG82, CG83, CG84, CG85, CG86, CG87, CG88, CG89, CG90, CG91, CG92, CG93, CG94, CG95, CG96, CG97, CG98, CG99, CG100	3000X3000	400	12-18 MM	18 MM TOR @ 150 MM C/C
F9	CG41, CG42, CG43, CG44, CG45, CG46, CG47, CG48, CG49, CG50, CG51, CG52, CG53, CG54, CG55, CG56, CG57, CG58, CG59, CG60, CG61, CG62, CG63, CG64, CG65, CG66, CG67, CG68, CG69, CG70, CG71, CG72, CG73, CG74, CG75, CG76, CG77, CG78, CG79, CG80, CG81, CG82, CG83, CG84, CG85, CG86, CG87, CG88, CG89, CG90, CG91, CG92, CG93, CG94, CG95, CG96, CG97, CG98, CG99, CG100	3000X3000	500	12-18 MM	18 MM TOR @ 150 MM C/C
F10	CG41, CG42, CG43, CG44, CG45, CG46, CG47, CG48, CG49, CG50, CG51, CG52, CG53, CG54, CG55, CG56, CG57, CG58, CG59, CG60, CG61, CG62, CG63, CG64, CG65, CG66, CG67, CG68, CG69, CG70, CG71, CG72, CG73, CG74, CG75, CG76, CG77, CG78, CG79, CG80, CG81, CG82, CG83, CG84, CG85, CG86, CG87, CG88, CG89, CG90, CG91, CG92, CG93, CG94, CG95, CG96, CG97, CG98, CG99, CG100	1600X2700	500	12-18 MM	18 MM TOR @ 150 MM C/C

**SCHEDULE OF COMBINED FOUNDATION:-**

MKD	UNDER COLS.	SIZE OF FOOTING (MM)	THICKNESS (MM)	REINFORCEMENT
COM1	C20, C29	3000X3000	500	18 MM TOR @ 150 MM C/C
COM2	C14, C18	3000X3000	500	18 MM TOR @ 150 MM C/C
COM3	C10, C11	3000X3000	500	18 MM TOR @ 150 MM C/C
COM4	C26, C28	3000X3000	500	18 MM TOR @ 150 MM C/C
COM5	C30, C32	2000X3000	500	18 MM TOR @ 150 MM C/C
COM6	C33, C34	3000X3000	500	18 MM TOR @ 150 MM C/C

**PROPOSED CONSTRUCTION OF G+VIL RESIDENTIAL G+VIL COMMERCIAL BUILDING BLOCK (I) OF FARUK KUMAR AND ANJALI KANU ON C/S, D/S, NO. 212, L.R. KHATA NO.-871/1/12 & 871/3, MOZA, KENUDAH, J.L. NO. 213, WARD NO. 22, UNDER P.S & DIST. & MUNICIPALITY - BANGKURA.**

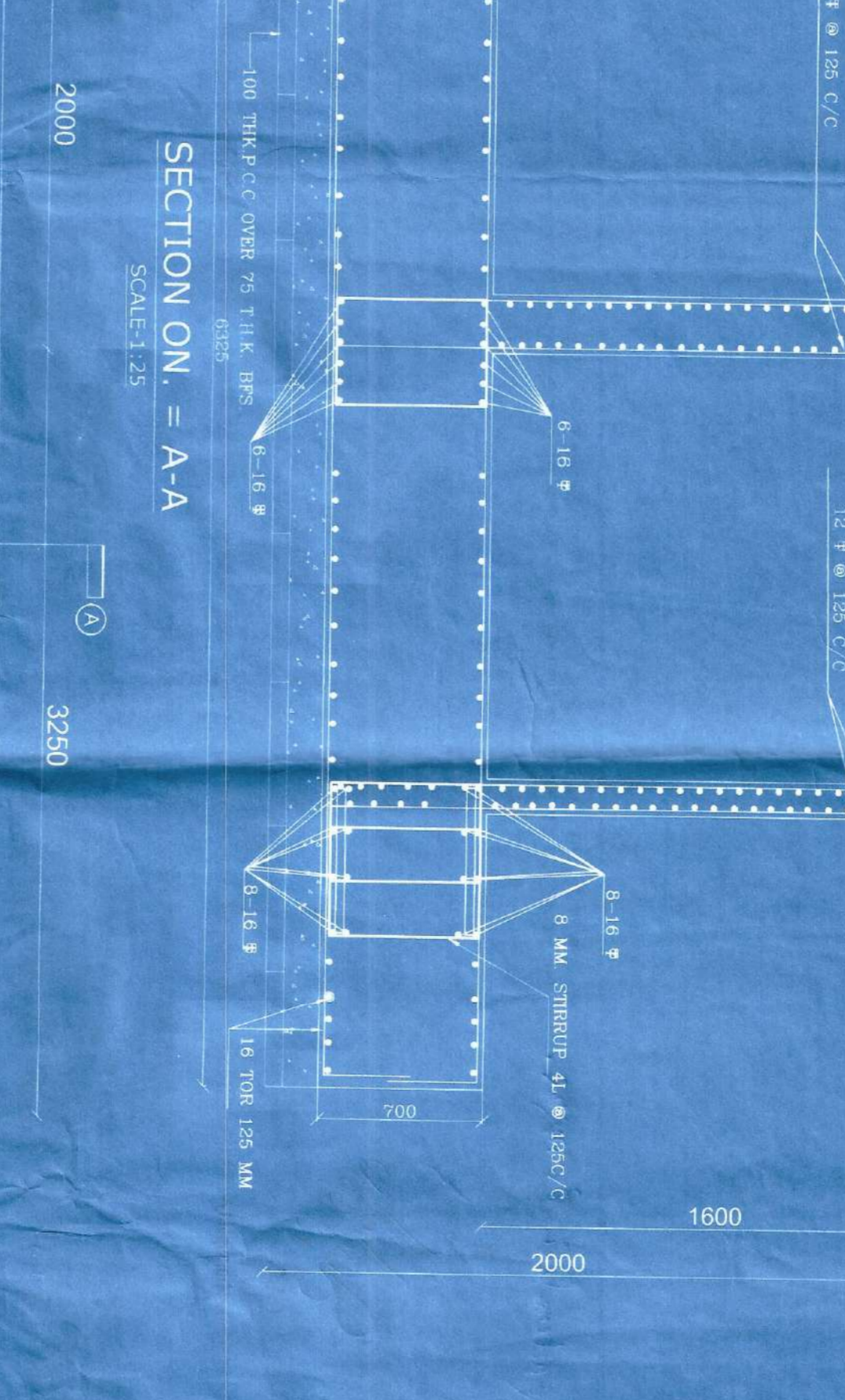
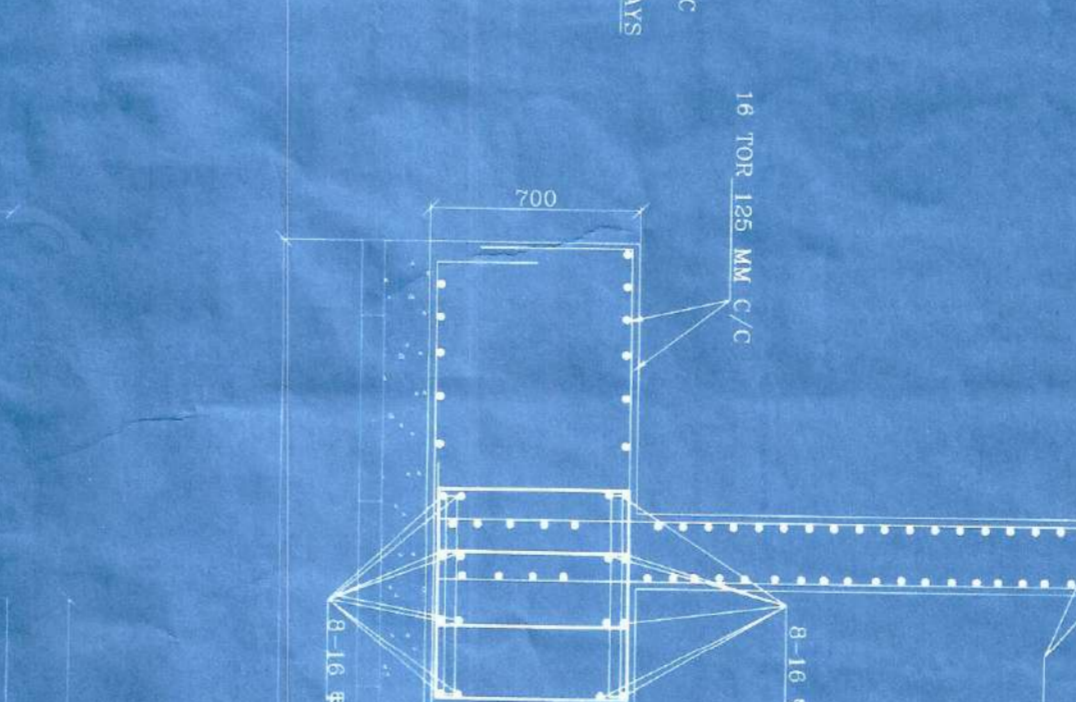
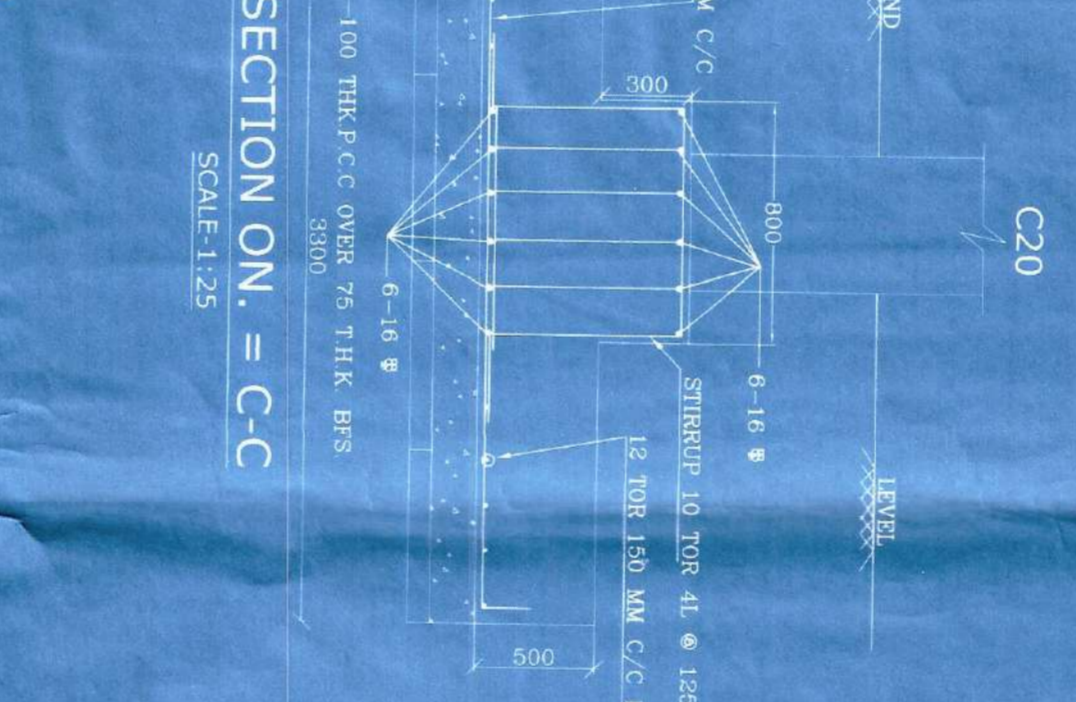
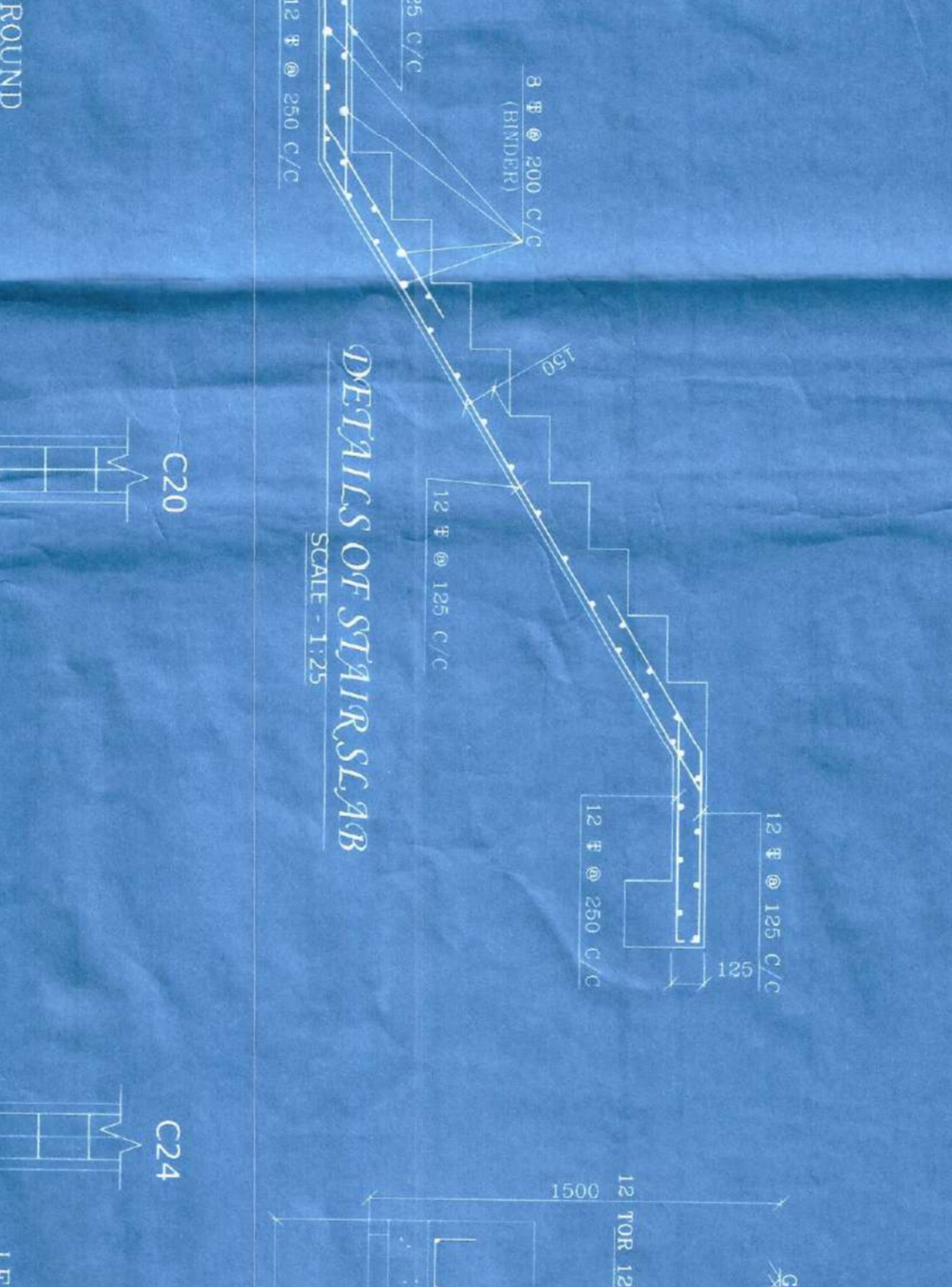
**SPECIFICATIONS:-**

- DEPTH OF FOUNDATION IS AT 1.50 M BELOW G.L.
- SAFE BEARING CAPACITY OF SOIL IS AS PER SOIL TEST REPORT.
- GRADE OF CONC. IS M-20 AND GRADE OF STEEL IS FE-415.
- PRO-2000
- FOR SLAB TOP BARS ARE EXTENDED UP TO 4L AND EXTRA BOTTOM BARS AT SUPPORT ARE CIRCULATED AT 1/3 FROM SUPPORT WHERE L IS SPAN OF THE BEAM.
- FOR BEAM EXTRA TOP BARS AT SUPPORT ARE EXTENDED UP TO 4L AND EXTRA BOTTOM BARS AT SUPPORT ARE CIRCULATED AT 1/3 FROM SUPPORT WHERE L IS SPAN OF THE BEAM.
- FOR BEAM COVER TO BE PROVIDED 25 MM AT BOTTOM AND 15 MM AT TOP.
- FOR FOUNDATION COVER TO BE PROVIDED 25 MM AT BOTTOM AND 15 MM AT TOP.
- FOR RAFT FOUNDATION COVER TO BE PROVIDED 25 MM AT BOTTOM AND 15 MM AT TOP.
- FOR STAIRS COVER TO BE PROVIDED 25 MM AT BOTTOM AND 15 MM AT TOP.
- FOR ISOLATED FOUNDATION COVER TO BE PROVIDED 25 MM AT BOTTOM AND 15 MM AT TOP.
- FOR COMBINED FOUNDATION COVER TO BE PROVIDED 25 MM AT BOTTOM AND 15 MM AT TOP.
- FOR RAFT FOUNDATION COVER TO BE PROVIDED 25 MM AT BOTTOM AND 15 MM AT TOP.
- FOR STAIRS COVER TO BE PROVIDED 25 MM AT BOTTOM AND 15 MM AT TOP.
- FOR ISOLATED FOUNDATION COVER TO BE PROVIDED 25 MM AT BOTTOM AND 15 MM AT TOP.
- FOR COMBINED FOUNDATION COVER TO BE PROVIDED 25 MM AT BOTTOM AND 15 MM AT TOP.

**SCHEDULE OF SLAB:-**

SLAB THICKNESS (MM)	ALONG SHORTER DIRECTION ALTH. CRANKED	ALONG LONGER DIRECTION ALTH. CRANKED	EXTRA AT SUPPORT ALONG SHORTER DIRECTION	EXTRA AT SUPPORT ALONG LONGER DIRECTION
S1	125 MM	8 @ 150 MM C/C	8 @ 200 MM C/C	8 @ 200 MM C/C
S2	125 MM	8 @ 150 MM C/C	8 @ 150 MM C/C	8 @ 200 MM C/C
S3	100 MM	8 @ 100 MM C/C	8 @ 100 MM C/C	8 @ 100 MM C/C
S4	175 MM	10 @ 150 MM C/C	10 @ 150 MM C/C	10 @ 150 MM C/C

FOR SLAB TOP BARS ARE EXTENDED UP TO 0.50 L AT INTERIOR SUPPORT AND 1.1 L AT THE END SUPPORT. FOR ISOLATED FOUNDATION COVER TO BE PROVIDED 25 MM AT BOTTOM AND 15 MM AT TOP.



**SEC. OF STRUCTURAL ENGINEER**

**SEC. OF ARCHITECT**

**SEC. OF MECHANICAL ENGINEER**

**SEC. OF ELECTRICAL ENGINEER**

**SEC. OF CIVIL ENGINEER**

**SEC. OF SANITARY ENGINEER**

**SEC. OF LANDSCAPE ARCHITECT**

**SEC. OF PAINTING ENGINEER**

**SEC. OF ROOFING ENGINEER**

**SEC. OF FLOORING ENGINEER**

**SEC. OF CARPET ENGINEER**

**SEC. OF CURTAIN ENGINEER**

**SEC. OF GLASS ENGINEER**

**SEC. OF IRON WORK ENGINEER**

**SEC. OF WOOD WORK ENGINEER**

**SEC. OF PLASTER ENGINEER**

**SEC. OF POINTING ENGINEER**

**SEC. OF PAINTING ENGINEER**

**SEC. OF FLOORING ENGINEER**

**SEC. OF CARPET ENGINEER**

**SEC. OF CURTAIN ENGINEER**

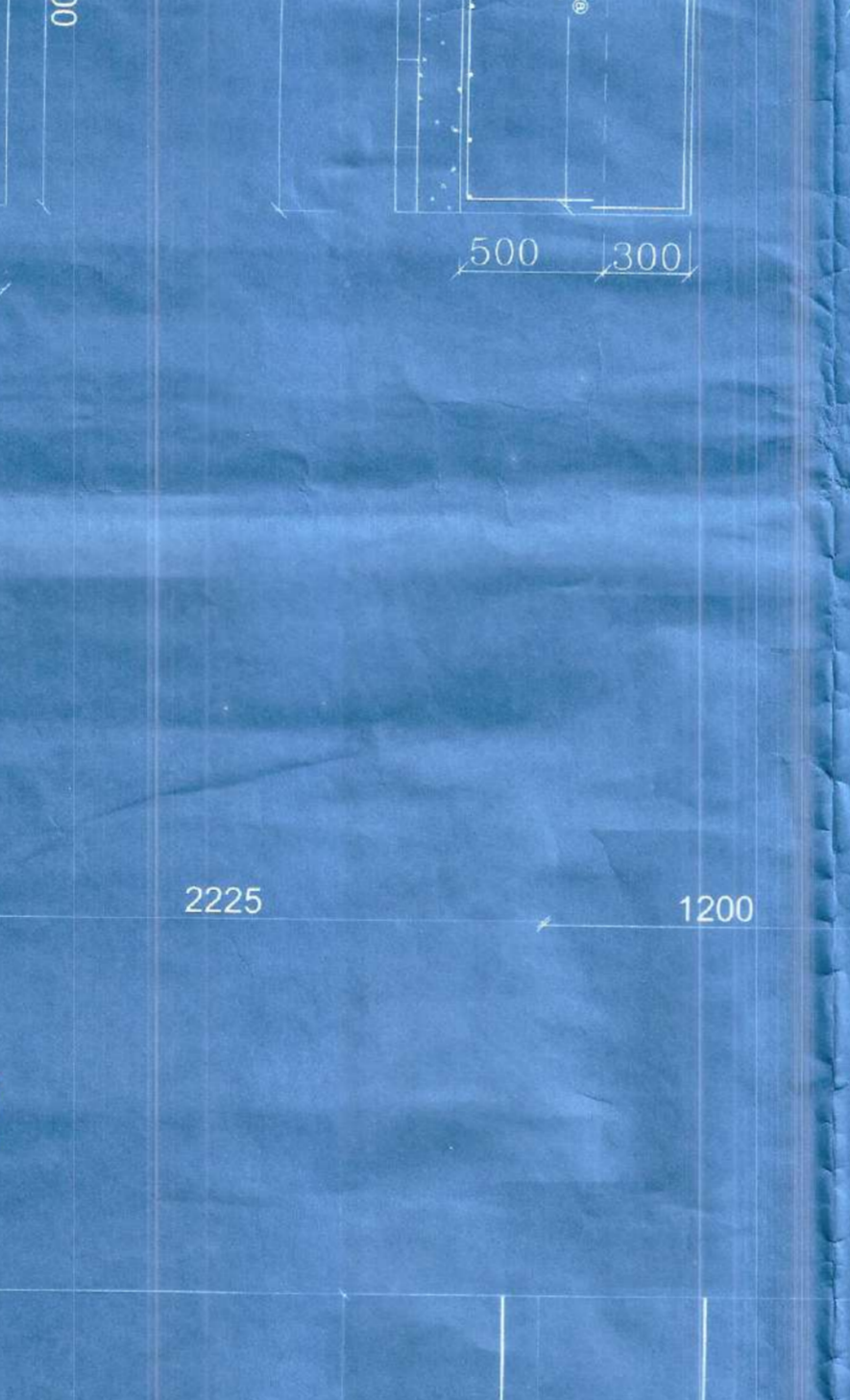
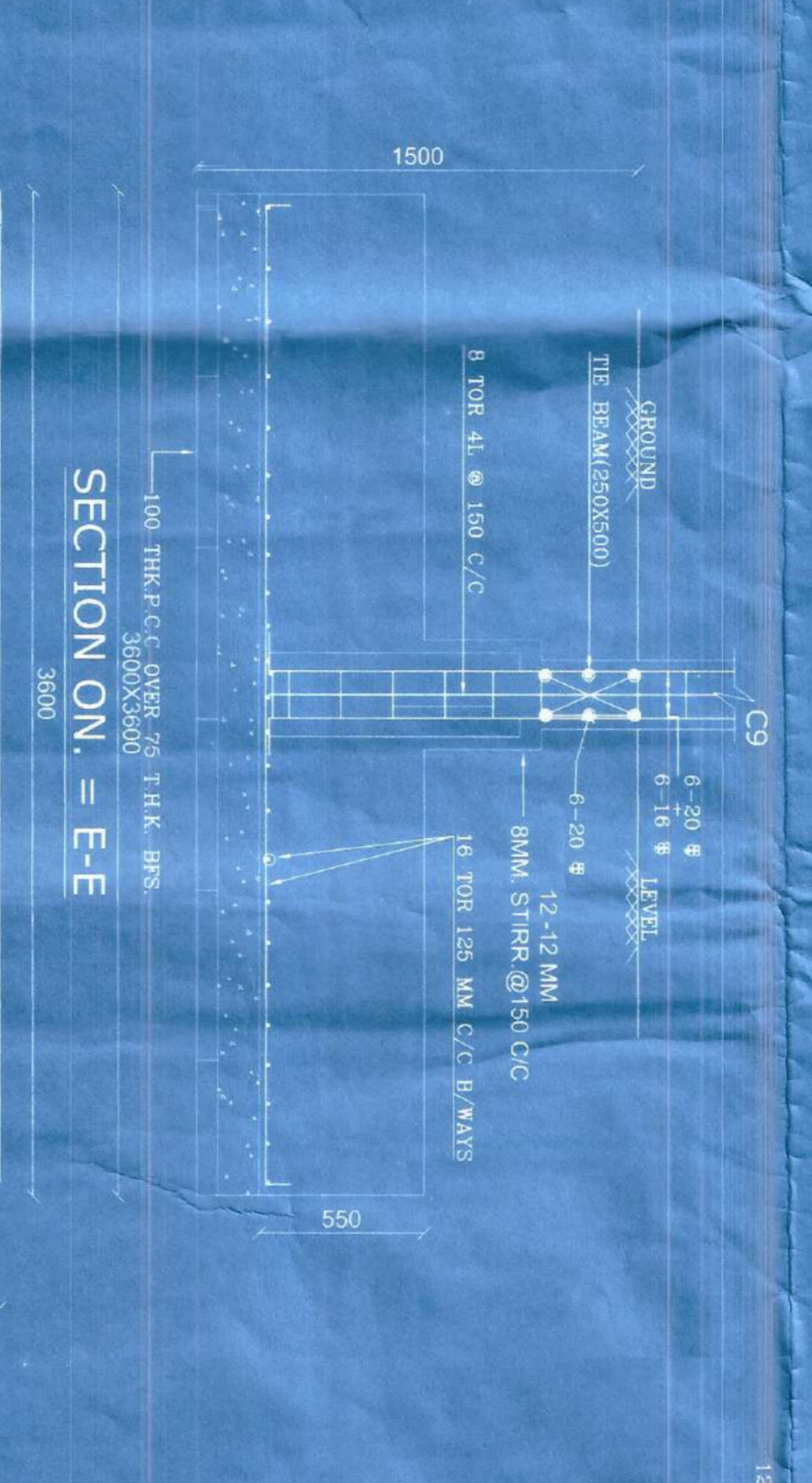
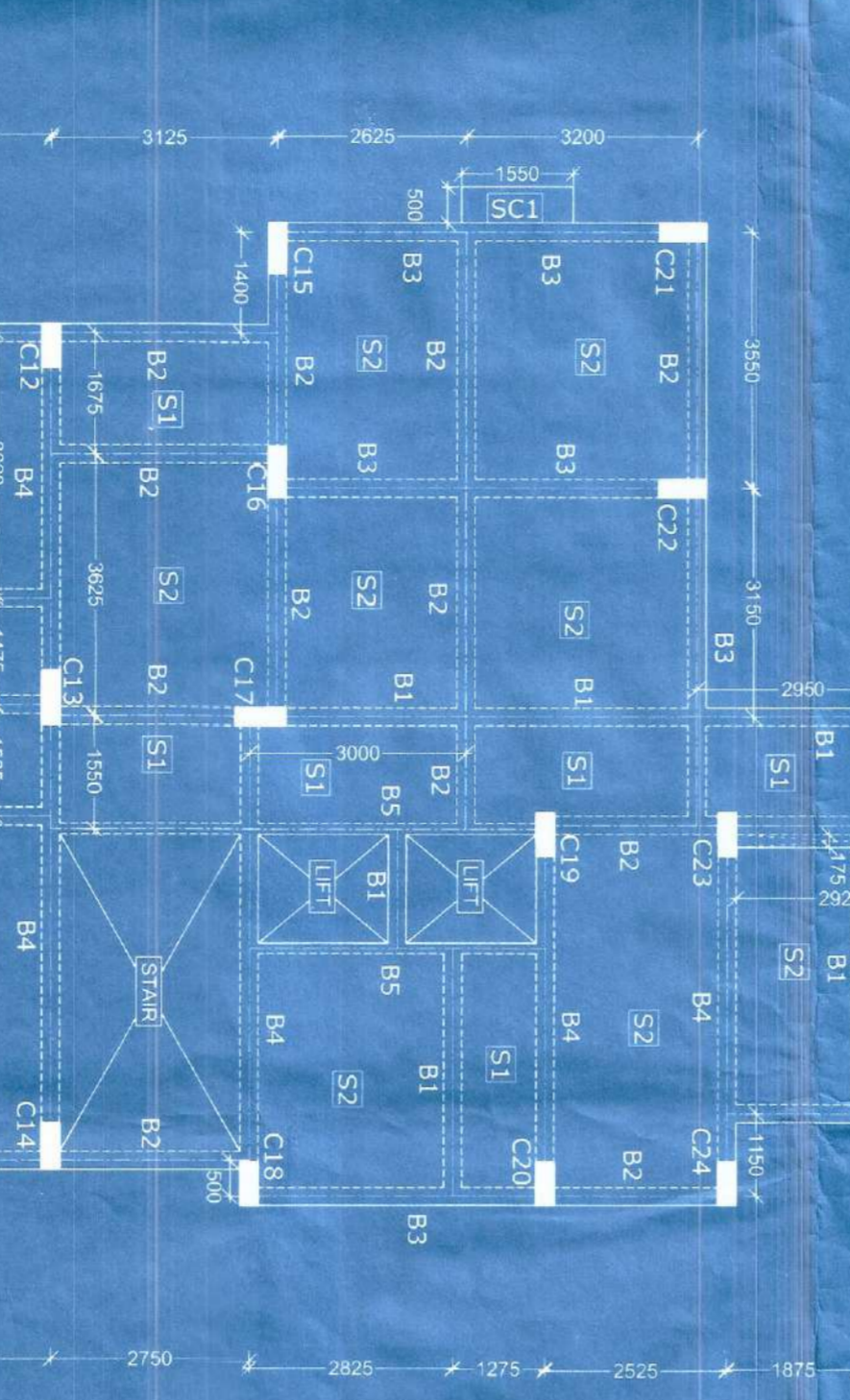
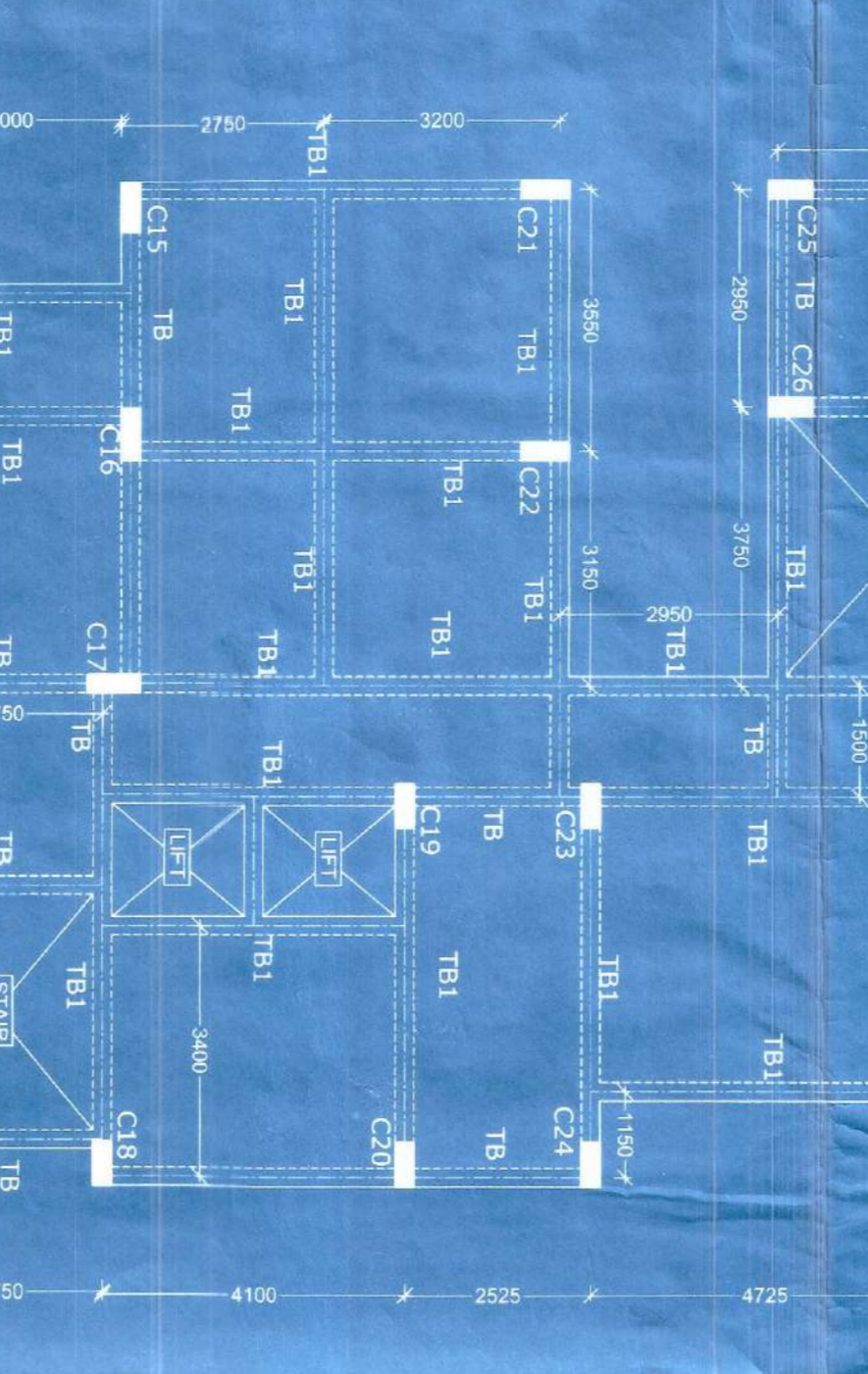
**SEC. OF GLASS ENGINEER**

**SEC. OF IRON WORK ENGINEER**

**SEC. OF WOOD WORK ENGINEER**

**SEC. OF PLASTER ENGINEER**

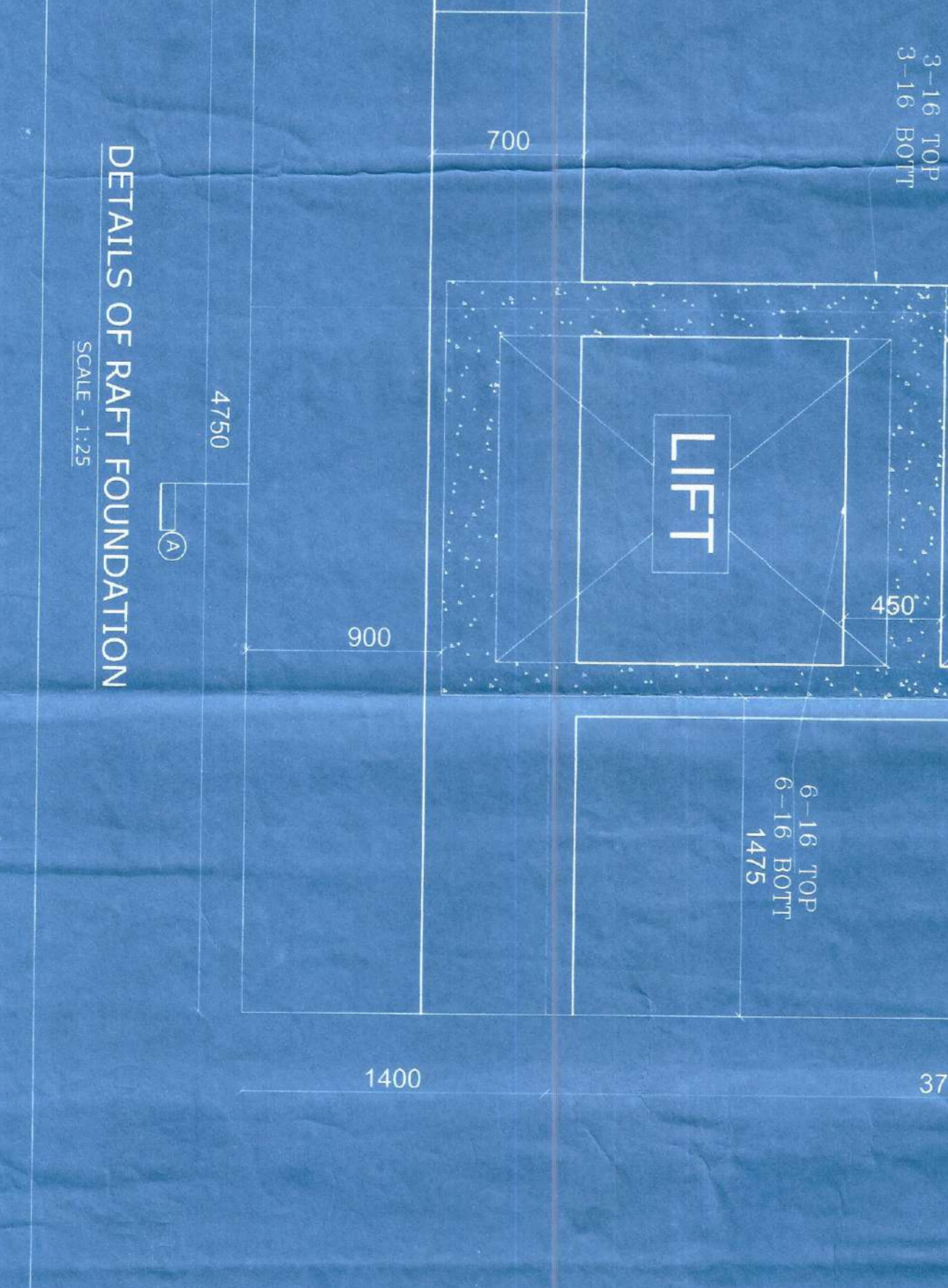
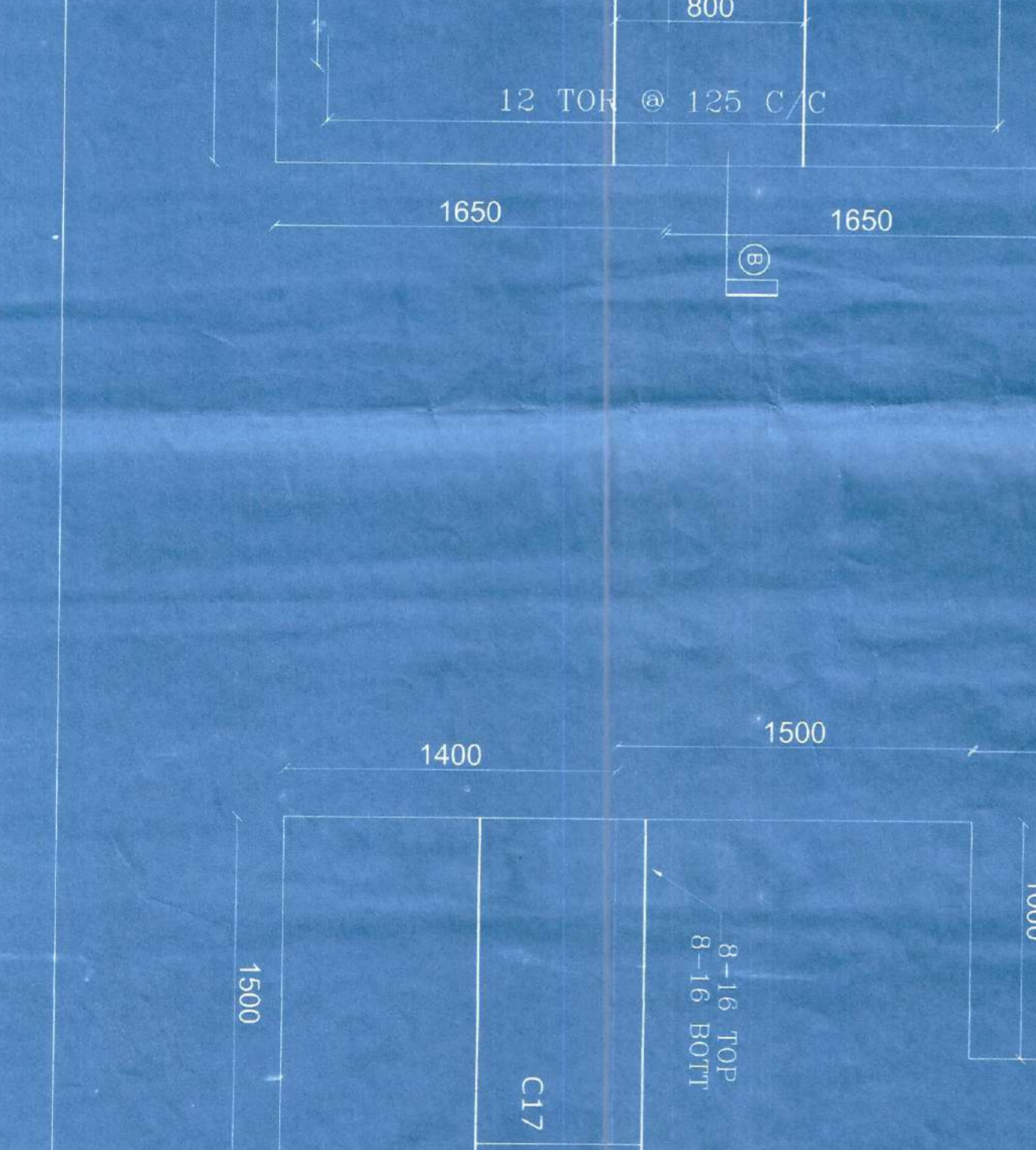
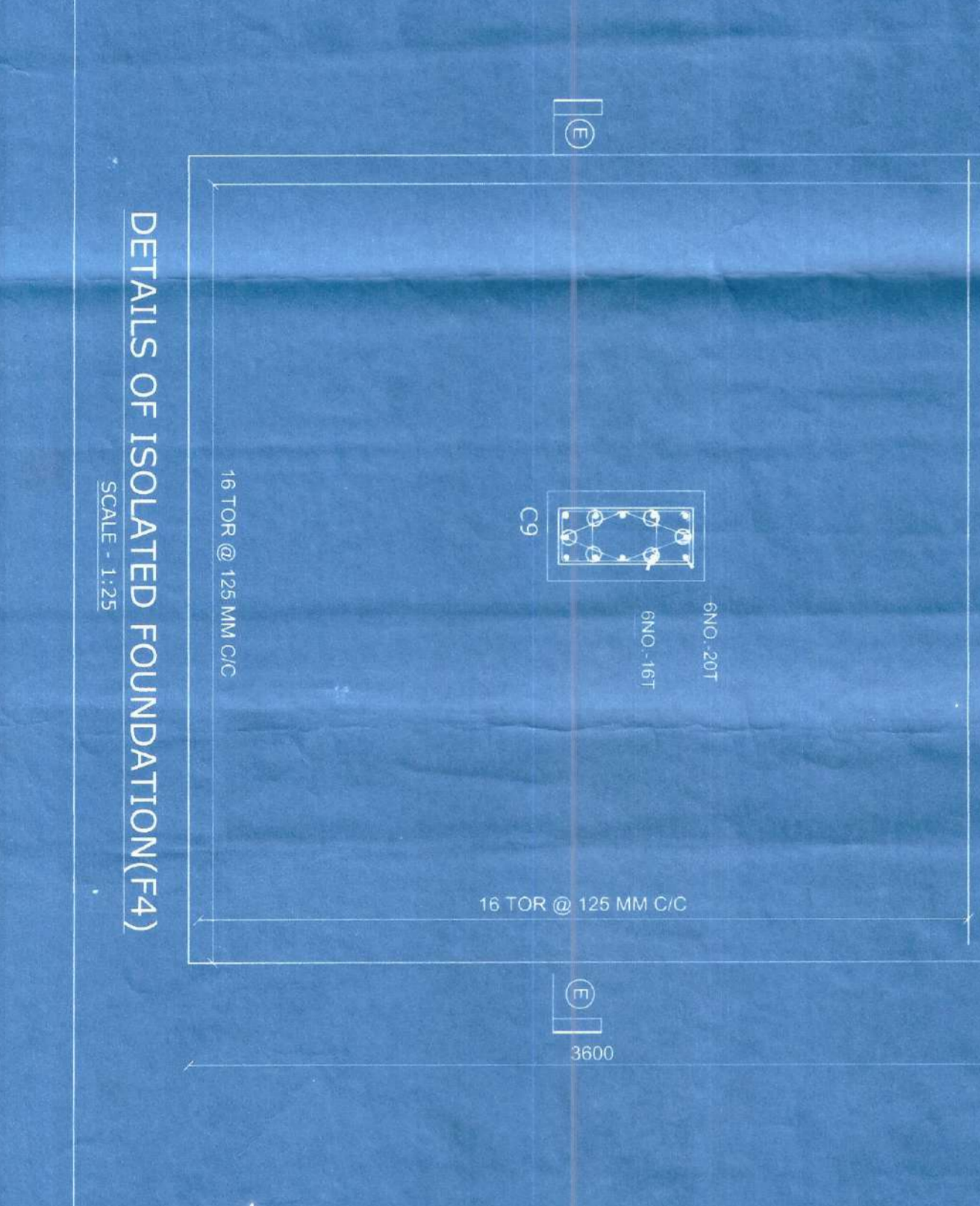
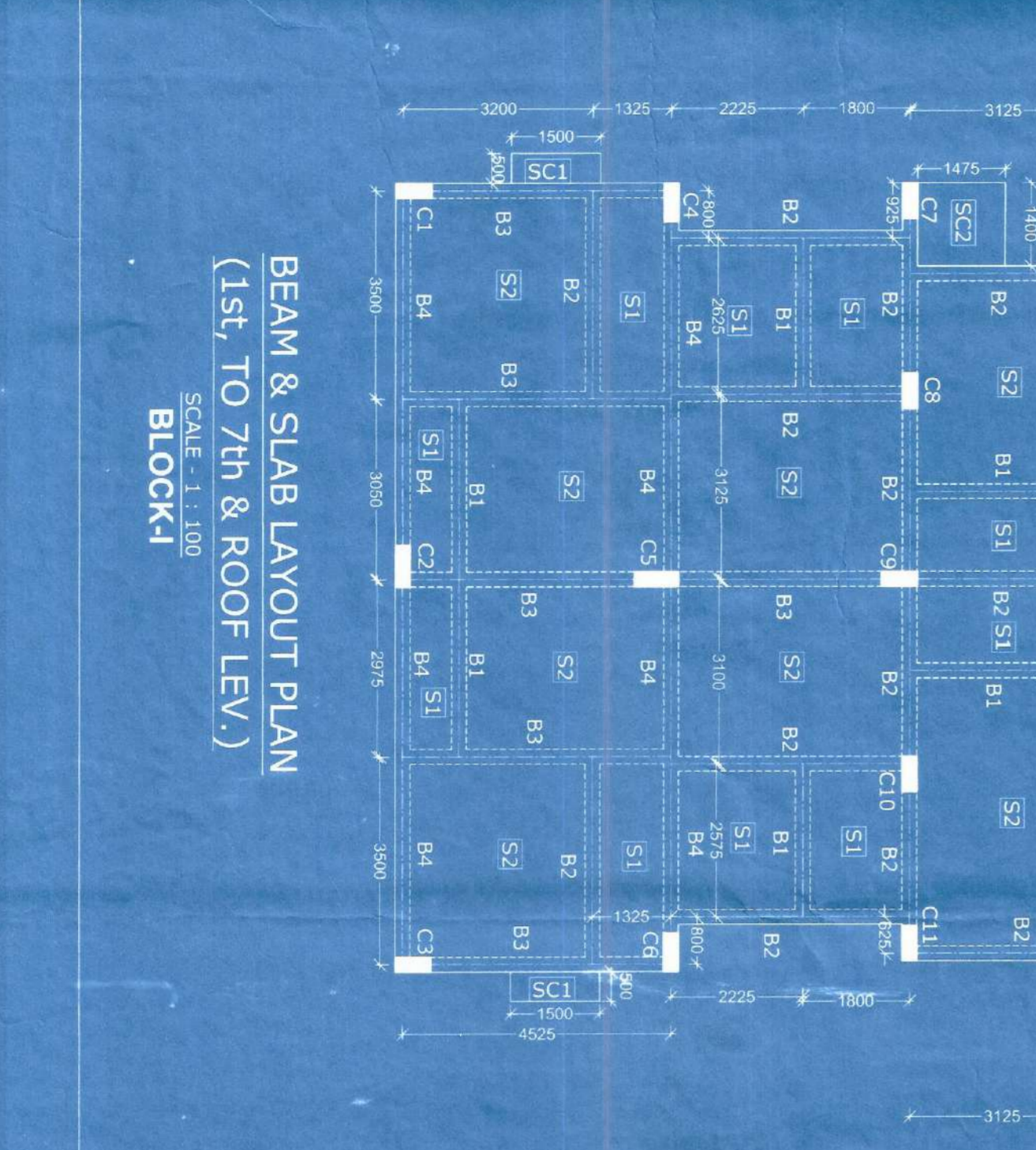
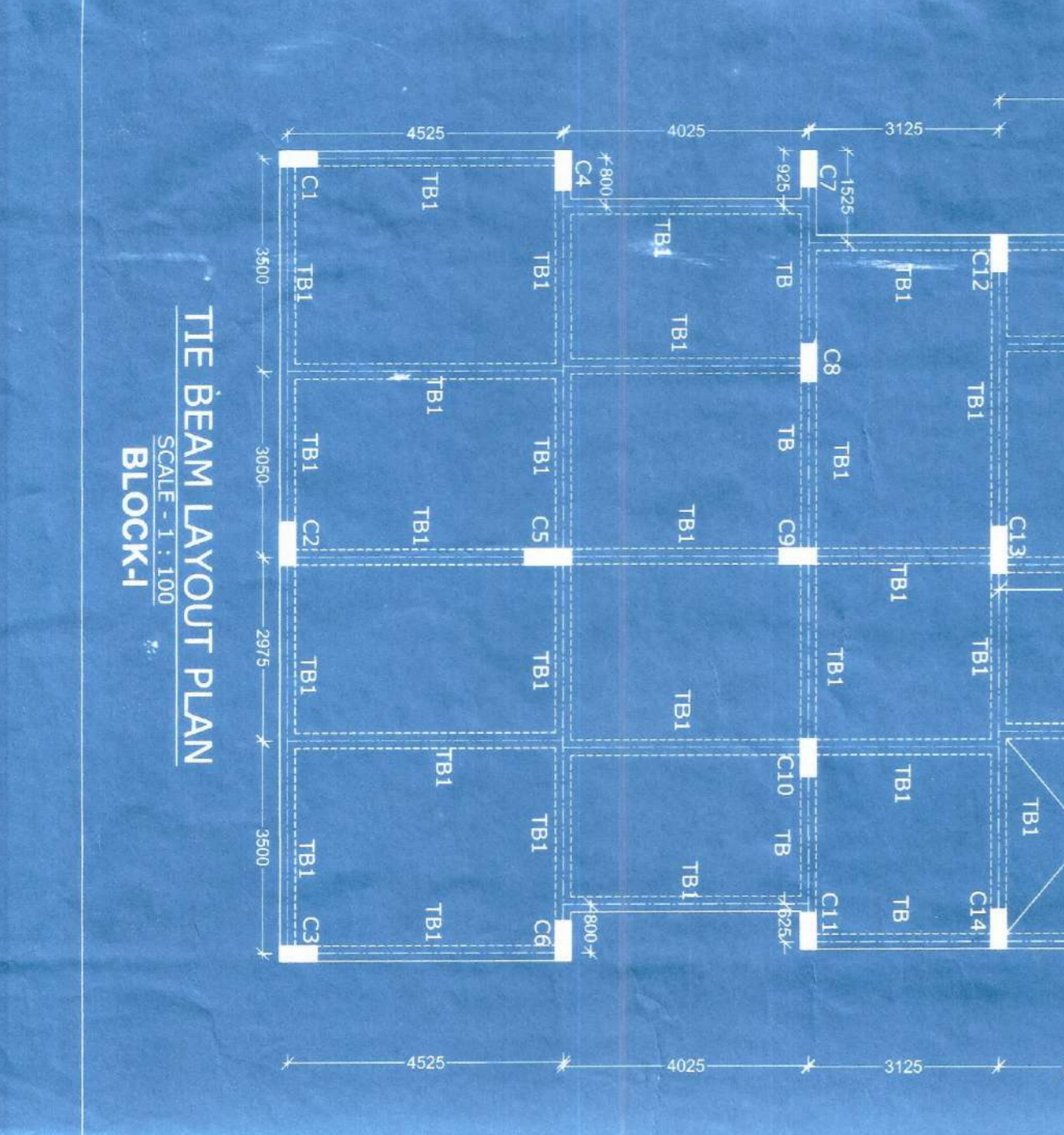
**SEC. OF POINTING ENGINEER**



**PROPOSED CONSTRUCTION OF G+VIL RESIDENTIAL G+VIL COMMERCIAL BUILDING BLOCK (I) OF FARUK KUMAR AND ANJALI KANU ON C/S, D/S, NO. 212, L.R. KHATA NO.-871/1/12 & 871/3, MOZA, KENUDAH, J.L. NO. 213, WARD NO. 22, UNDER P.S & DIST. & MUNICIPALITY - BANGKURA.**

**SPECIFICATIONS:-**

- DEPTH OF FOUNDATION IS AT 1.50 M BELOW G.L.
- SAFE BEARING CAPACITY OF SOIL IS AS PER SOIL TEST REPORT.
- GRADE OF CONC. IS M-20 AND GRADE OF STEEL IS FE-415.
- PRO-2000
- FOR SLAB TOP BARS ARE EXTENDED UP TO 4L AND EXTRA BOTTOM BARS AT SUPPORT ARE CIRCULATED AT 1/3 FROM SUPPORT WHERE L IS SPAN OF THE BEAM.
- FOR BEAM EXTRA TOP BARS AT SUPPORT ARE EXTENDED UP TO 4L AND EXTRA BOTTOM BARS AT SUPPORT ARE CIRCULATED AT 1/3 FROM SUPPORT WHERE L IS SPAN OF THE BEAM.
- FOR BEAM COVER TO BE PROVIDED 25 MM AT BOTTOM AND 15 MM AT TOP.
- FOR FOUNDATION COVER TO BE PROVIDED 25 MM AT BOTTOM AND 15 MM AT TOP.
- FOR RAFT FOUNDATION COVER TO BE PROVIDED 25 MM AT BOTTOM AND 15 MM AT TOP.
- FOR STAIRS COVER TO BE PROVIDED 25 MM AT BOTTOM AND 15 MM AT TOP.
- FOR ISOLATED FOUNDATION COVER TO BE PROVIDED 25 MM AT BOTTOM AND 15 MM AT TOP.
- FOR COMBINED FOUNDATION COVER TO BE PROVIDED 25 MM AT BOTTOM AND 15 MM AT TOP.
- FOR RAFT FOUNDATION COVER TO BE PROVIDED 25 MM AT BOTTOM AND 15 MM AT TOP.
- FOR STAIRS COVER TO BE PROVIDED 25 MM AT BOTTOM AND 15 MM AT TOP.
- FOR ISOLATED FOUNDATION COVER TO BE PROVIDED 25 MM AT BOTTOM AND 15 MM AT TOP.
- FOR COMBINED FOUNDATION COVER TO BE PROVIDED 25 MM AT BOTTOM AND 15 MM AT TOP.



**PROPOSED CONSTRUCTION OF G+VIL RESIDENTIAL G+VIL COMMERCIAL BUILDING BLOCK (I) OF FARUK KUMAR AND ANJALI KANU ON C/S, D/S, NO. 212, L.R. KHATA NO.-871/1/12 & 871/3, MOZA, KENUDAH, J.L. NO. 213, WARD NO. 22, UNDER P.S & DIST. & MUNICIPALITY - BANGKURA.**

**SPECIFICATIONS:-**

- DEPTH OF FOUNDATION IS AT 1.50 M BELOW G.L.
- SAFE BEARING CAPACITY OF SOIL IS AS PER SOIL TEST REPORT.
- GRADE OF CONC. IS M-20 AND GRADE OF STEEL IS FE-415.
- PRO-2000
- FOR SLAB TOP BARS ARE EXTENDED UP TO 4L AND EXTRA BOTTOM BARS AT SUPPORT ARE CIRCULATED AT 1/3 FROM SUPPORT WHERE L IS SPAN OF THE BEAM.
- FOR BEAM EXTRA TOP BARS AT SUPPORT ARE EXTENDED UP TO 4L AND EXTRA BOTTOM BARS AT SUPPORT ARE CIRCULATED AT 1/3 FROM SUPPORT WHERE L IS SPAN OF THE BEAM.
- FOR BEAM COVER TO BE PROVIDED 25 MM AT BOTTOM AND 15 MM AT TOP.
- FOR FOUNDATION COVER TO BE PROVIDED 25 MM AT BOTTOM AND 15 MM AT TOP.
- FOR RAFT FOUNDATION COVER TO BE PROVIDED 25 MM AT BOTTOM AND 15 MM AT TOP.
- FOR STAIRS COVER TO BE PROVIDED 25 MM AT BOTTOM AND 15 MM AT TOP.
- FOR ISOLATED FOUNDATION COVER TO BE PROVIDED 25 MM AT BOTTOM AND 15 MM AT TOP.
- FOR COMBINED FOUNDATION COVER TO BE PROVIDED 25 MM AT BOTTOM AND 15 MM AT TOP.
- FOR RAFT FOUNDATION COVER TO BE PROVIDED 25 MM AT BOTTOM AND 15 MM AT TOP.
- FOR STAIRS COVER TO BE PROVIDED 25 MM AT BOTTOM AND 15 MM AT TOP.
- FOR ISOLATED FOUNDATION COVER TO BE PROVIDED 25 MM AT BOTTOM AND 15 MM AT TOP.
- FOR COMBINED FOUNDATION COVER TO BE PROVIDED 25 MM AT BOTTOM AND 15 MM AT TOP.

SHEET NO 687

Copy of order passed the Chairperson  
of Bankura Municipality on  
Application No. 371/B  
Of 20. 12/20 19 Dated. 12.03.2019  
Presented by. Tarun Kr Kundu & Others  
of ward No. 22 Supplying  
for permission to. Construct of (G+II Block I & G+IV Block II)  
Residential Apartment as Per Plan.

Seen the report of the S.A.E.,  
The plan is Sanction and Valid  
For 3 Years.

Sd/-

BANKURA MUNICIPALITY OFFICE

The. 20.19

Copy the forwarded to. Tarun kr Kundu & Others / Kenduadihi, Bankura.

For information.

Muz 28.08.19  
Chairman  
Bankura Municipality

28/08/19

28.08.19  
C.I.C.  
P.W.D  
Bankura Municipality