

PROJECT:
PROPOSED PLAN OF G+V RESIDENTIAL DEVELOPMENT AT KANCHANJANGA INTEGRATED INDUSTRIAL TOWNSHIP AT JALPAIGURI.

TITLE:
BEAM SLAB ARRANGEMENT PLAN AT 1ST FLOOR, TYPICAL FLOOR, SCHEDULES (BLOCK-C)

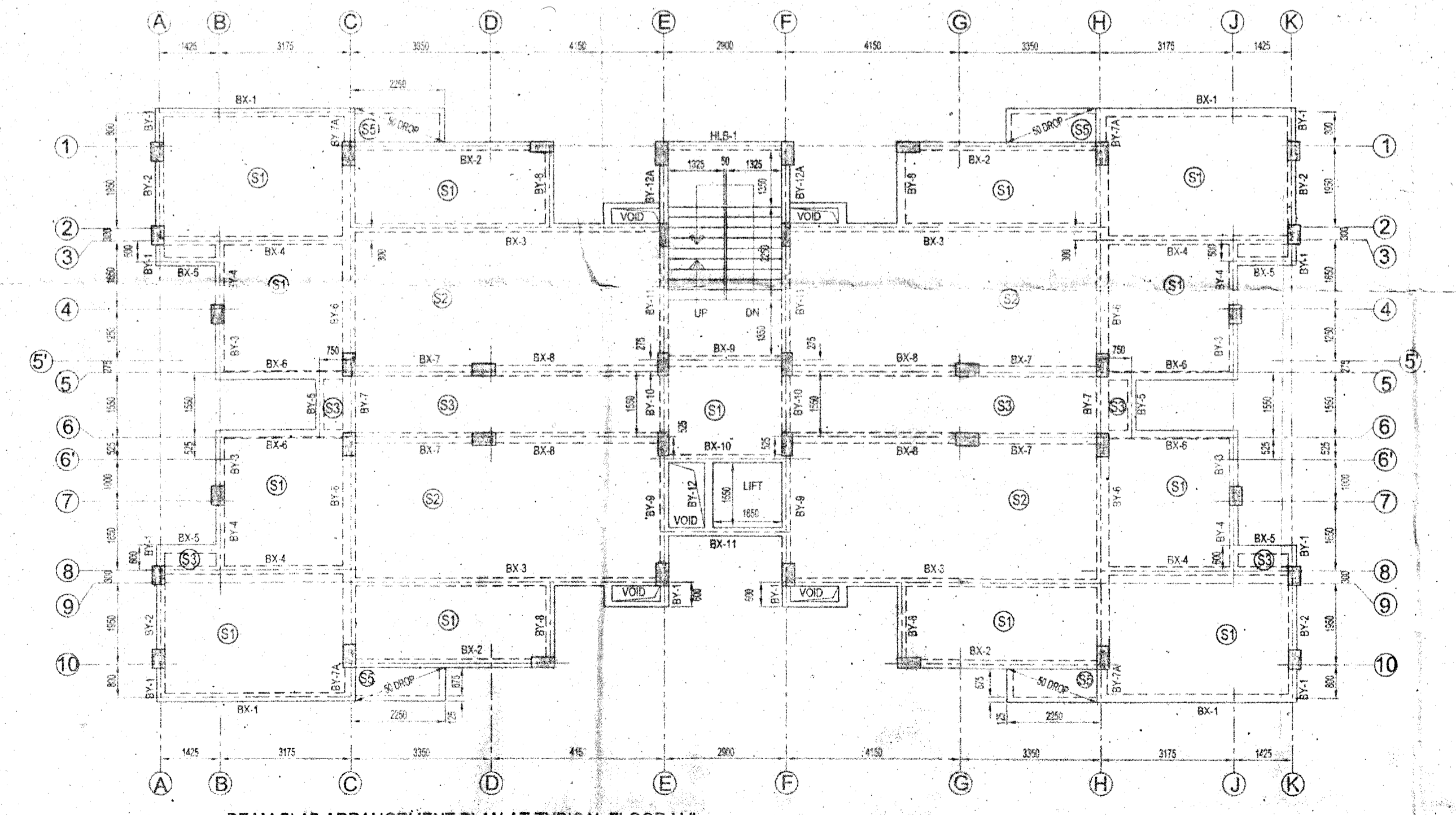
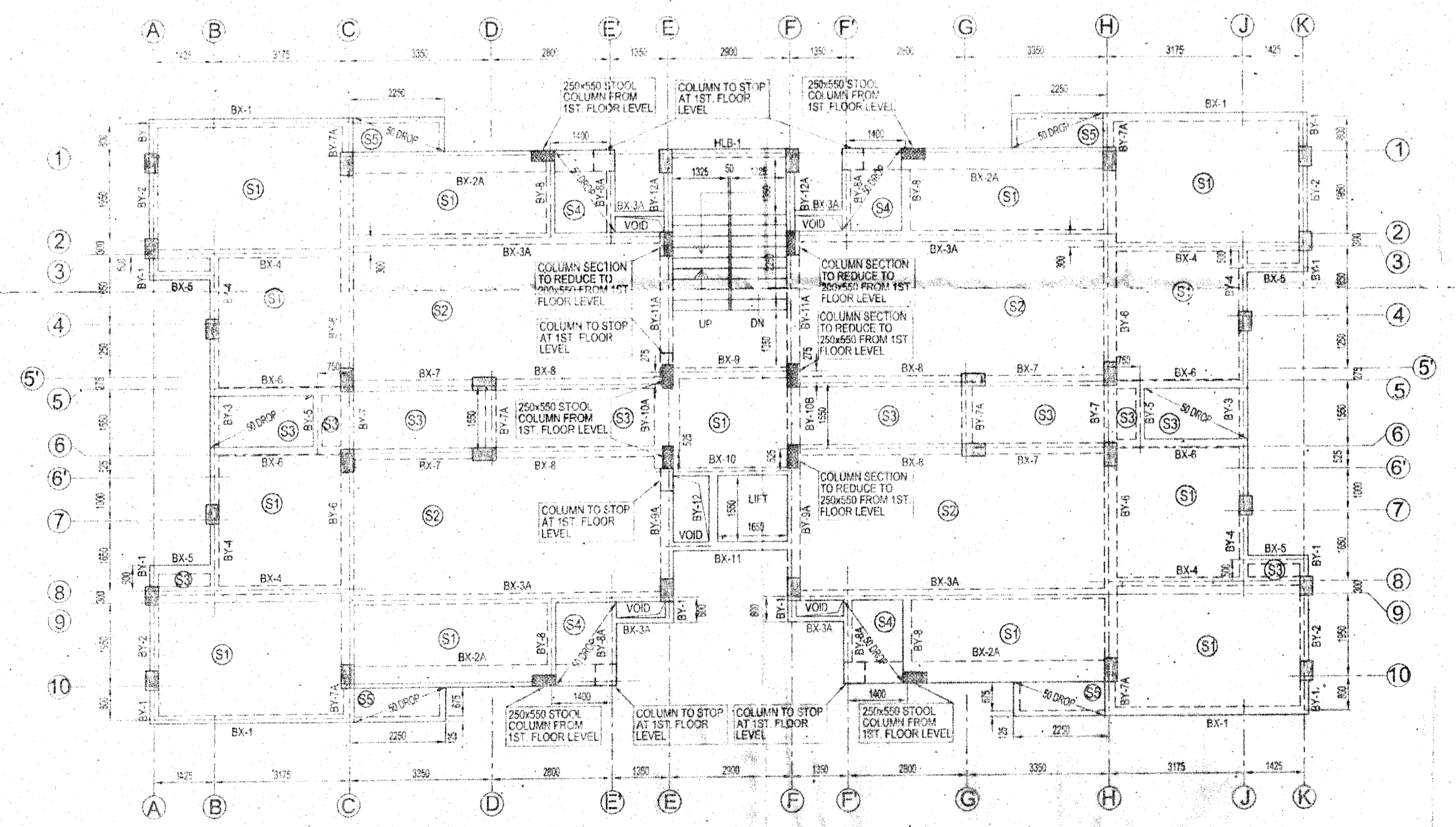
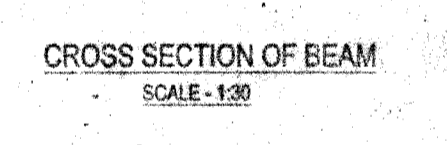
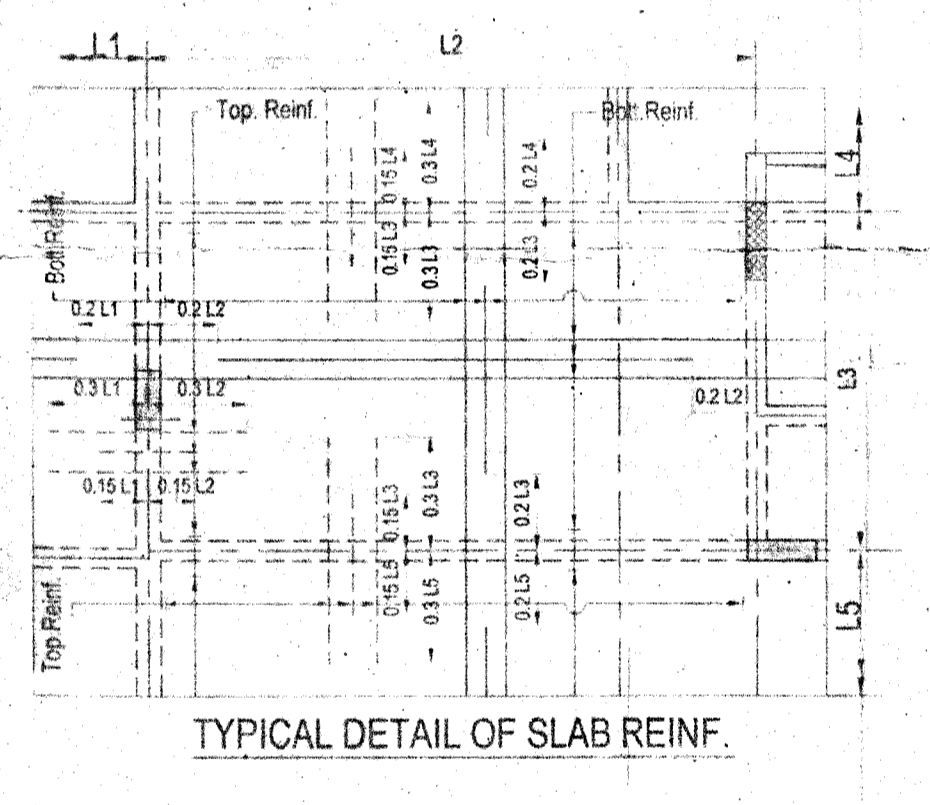
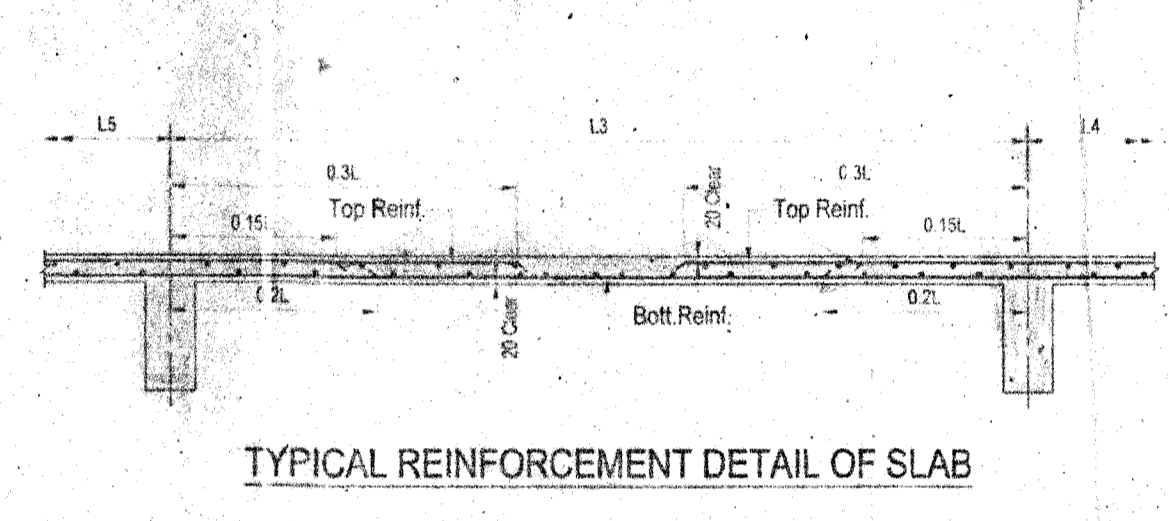
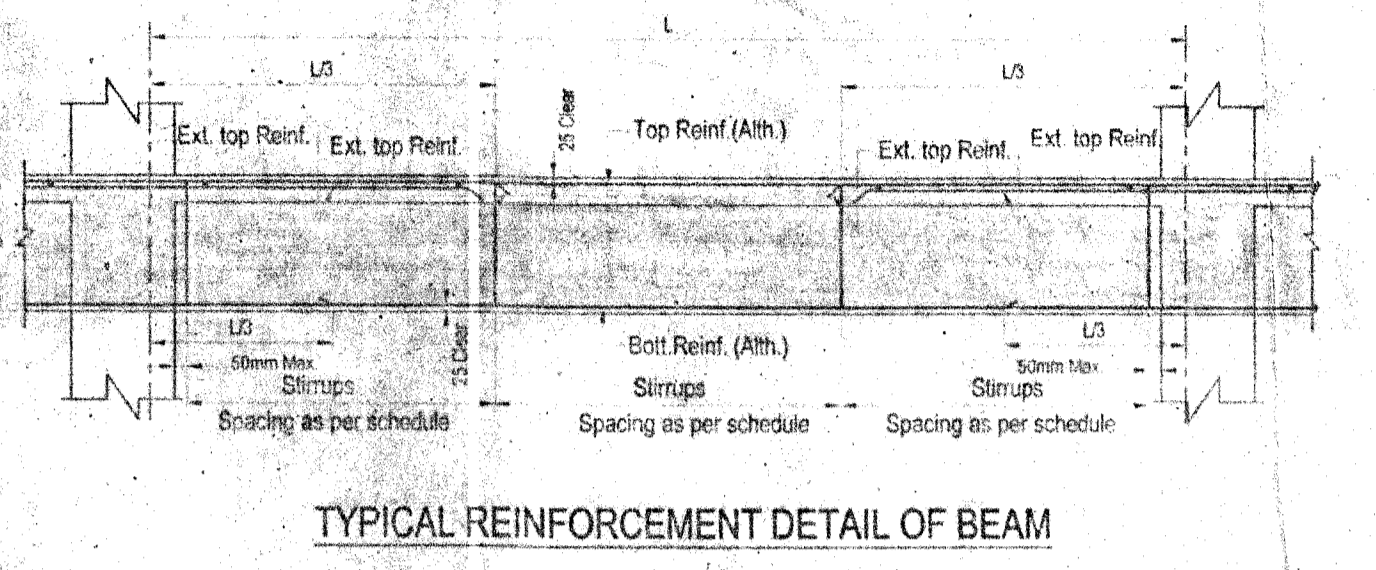
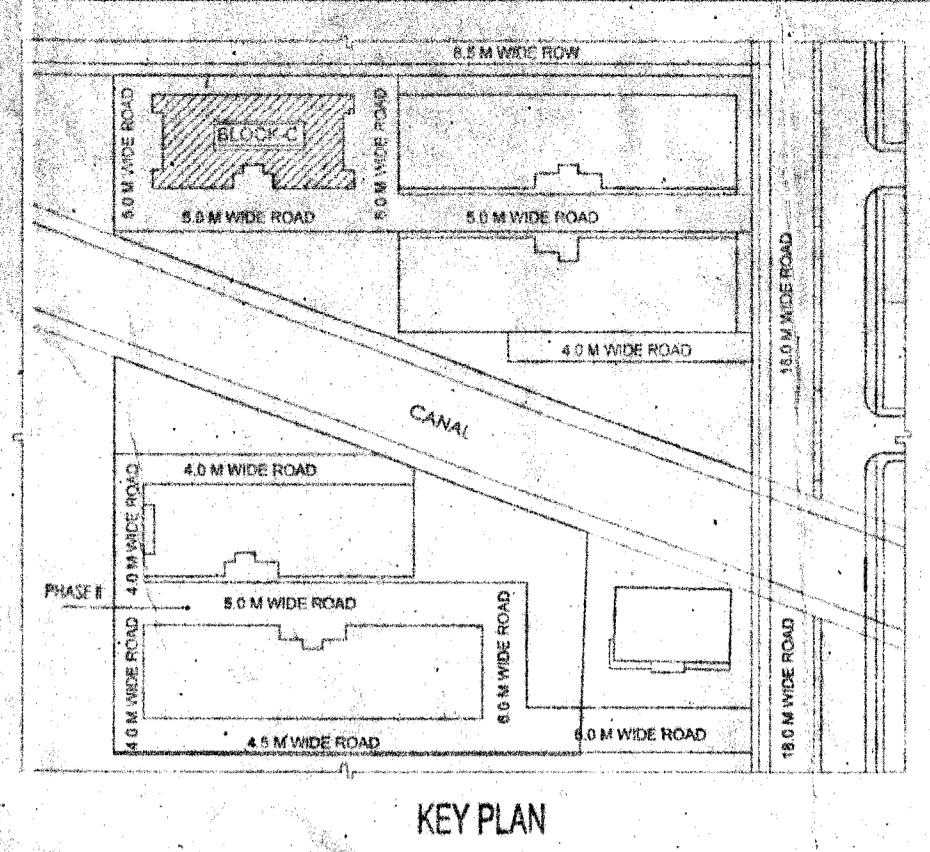
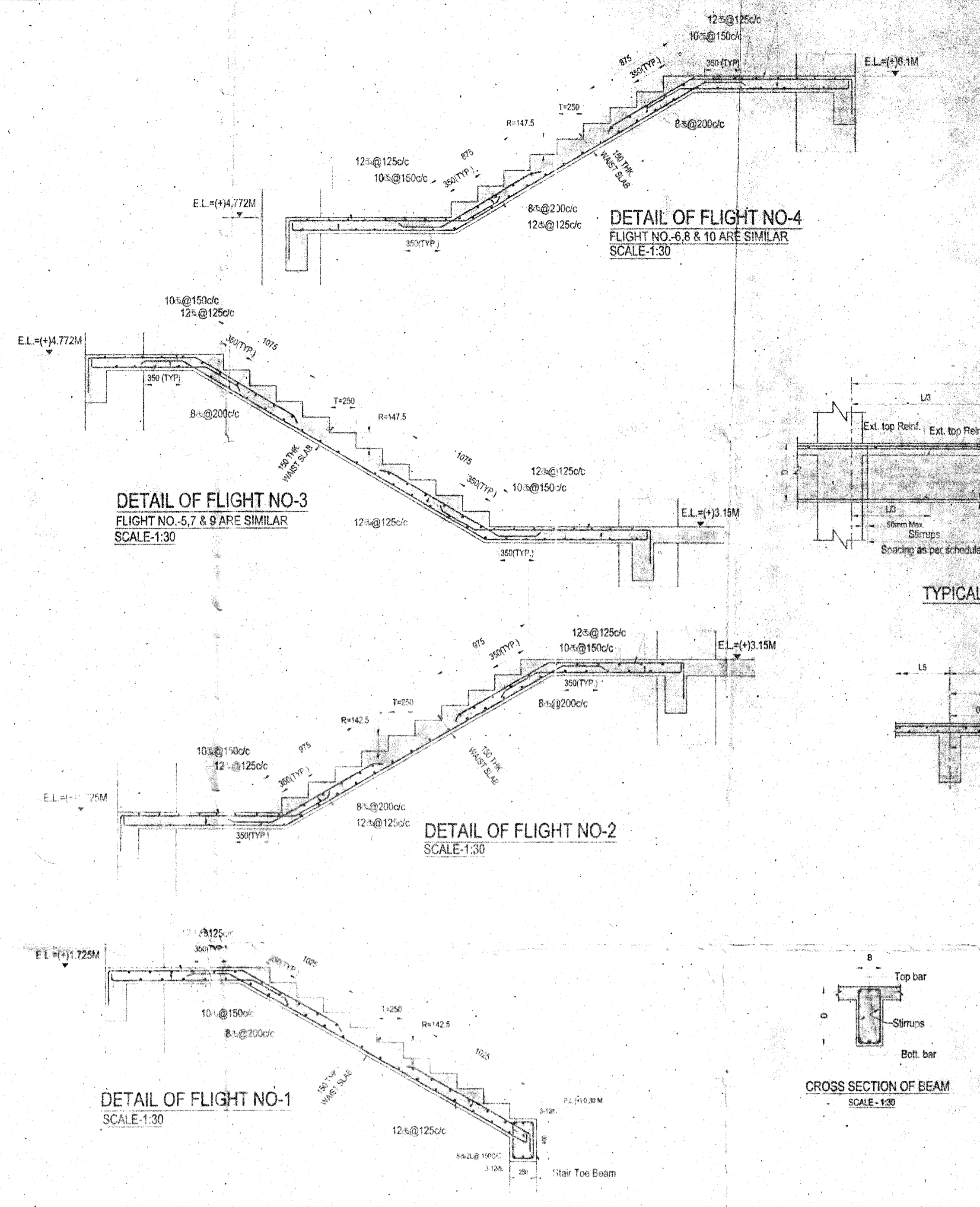
- NOTES:-
- 1) ALL DIMENSIONS ARE IN MM. U.O.M.
 - 2) DIMENSION ARE TO READ ONLY NOT TO BE SCALED
 - 3) CLEAR COVER TO MAIN REINFORCEMENT FOR:-
 a) Slab - i) Top & bottom = 20 mm. ii) End = 25 mm.
 b) Floor beam = 30 mm.
 - 4) GRADE OF -
 a) CONCRETE = M-25 DESIGN MIX & WATER CEMENT RATIO SHALL BE MAINTAINED BETWEEN 0.39 TO 0.40 BY APPLYING SUPER PLASTICISER AS WATER REDUCING ADMIXER.
 b) STEEL - Fe 550
 c) CEMENT SHALL BE EQUIVALENT TO #3
 5) STEEL CHAIRS AND SPACER BARS WHEREVER NECESSARY SHALL BE PROVIDED BETWEEN TWO LAYERS OF REINF.
 6) FOR ANY OTHER GUIDELINE NOT STATED IN THIS DRAWING RELEVANT I.S. CODES ARE TO BE FOLLOWED.

SCHEDULE OF BEAM:-

BEAM MKD.	SIZE (mmxmm)	REINF. AT SUPPORT			REINF. AT SPAN			REMARKS
		TOP	BOT	STRPS	TOP	BOT	STRPS	
BX-1	200x500	2-20 ⁺	2-20 ⁻	8 ⁺ 2L@110C/C	---	---	---	
BY-1 BY-3 BY-7A	200x500	2-20 ⁺	2-16 ⁻	8 ⁺ 2L@110C/C	---	---	---	
BX-2A	500x500	7-20 ⁺	4-20 ⁻	10 ⁺ 4L@110C/C	4-20 ⁻	7-20 ⁻	8 ⁺ 4L@110C/C	
BX-2, BX-4, BX-5	200x500	2-16 ⁺	2-16 ⁻	8 ⁺ 2L@110C/C	2-16 ⁻	2-16 ⁻	8 ⁺ 2L@175C/C	
BX-3	200x500	4-16 ⁺	2-16 ⁻	8 ⁺ 2L@110C/C	2-16 ⁻	2-16 ⁻	8 ⁺ 2L@175C/C	
BX-3A	250x500	3-20 ⁺	3-20 ⁻	8 ⁺ 2L@110C/C	2-20 ⁻	3-20 ⁻	8 ⁺ 2L@175C/C	
BX-6	200x500	2-16 ⁺	2-16 ⁻	8 ⁺ 2L@110C/C	2-16 ⁻	2-16 ⁻	8 ⁺ 2L@175C/C	
BY-4 BY-8A	250x500	3-20 ⁺	3-16 ⁻	8 ⁺ 2L@110C/C	2-20 ⁻	3-16 ⁻	8 ⁺ 2L@175C/C	
BX-7, BX-8, BX-9 BY-7A	250x500	2-16 ⁺	3-16 ⁻	8 ⁺ 2L@110C/C	2-16 ⁻	3-16 ⁻	8 ⁺ 2L@175C/C	
BX-5, BX-10, BX-11, BY-5, BY-8, BY-12	200x500	2-16 ⁺	2-16 ⁻	8 ⁺ 2L@110C/C	2-16 ⁻	2-16 ⁻	8 ⁺ 2L@175C/C	
BX-12	250x500	2-16 ⁺	3-12 ⁻	8 ⁺ 2L@110C/C	2-16 ⁻	3-12 ⁻	8 ⁺ 2L@175C/C	
HLB-1	200x500	2-16 ⁺	2-16 ⁻	8 ⁺ 2L@110C/C	2-16 ⁻	2-16 ⁻	8 ⁺ 2L@175C/C	
BY-3	200x500	2-16 ⁺	2-16 ⁻	8 ⁺ 2L@110C/C	2-16 ⁻	2-16 ⁻	8 ⁺ 2L@175C/C	
BY-2 BY-12A	200x500	2-16 ⁺	2-16 ⁻	8 ⁺ 2L@110C/C	2-16 ⁻	2-16 ⁻	8 ⁺ 2L@175C/C	
BY-6 BY-7 BY-9A, BY-10B, BY-11A	300x500	5-20 ⁺	3-20 ⁻	10 ⁺ 4L@110C/C	3-20 ⁻	3-20 ⁻	8 ⁺ 2L@110C/C	
BY-10A	600x600	5-20 ⁺	5-20 ⁻	10 ⁺ 4L@110C/C	5-20 ⁻	5-20 ⁻	8 ⁺ 4L@110C/C	
BY-9 BY-10, BY-11	200x500	2-16 ⁺	2-16 ⁻	8 ⁺ 2L@110C/C	2-16 ⁻	2-16 ⁻	8 ⁺ 2L@150C/C	

SCHEDULE OF SLAB:-

SLAB MKD.	THK (mm)	REINF. ALONG SHORT SPAN				REINF. ALONG LONG SPAN			
		AT SUPPORT		AT SPAN		AT SUPPORT		AT SPAN	
		TOP	BOT	TOP	BOT	TOP	BOT	TOP	BOT
S1	120	8 ⁺ @150cc	8 ⁺ @300cc	8 ⁺ @150cc	8 ⁺ @175cc	8 ⁺ @200cc	8 ⁺ @200cc	8 ⁺ @200cc	
S2	125	8 ⁺ @125cc	8 ⁺ @300cc	8 ⁺ @150cc	8 ⁺ @150cc	8 ⁺ @350cc	8 ⁺ @175cc	8 ⁺ @175cc	
S3, S4, S6	120	8 ⁺ @175cc	8 ⁺ @175cc	8 ⁺ @175cc	8 ⁺ @175cc	8 ⁺ @200cc	8 ⁺ @200cc	8 ⁺ @200cc	
S5	125	10 ⁺ @125cc	8 ⁺ @200cc	10 ⁺ @125cc	8 ⁺ @200cc	8 ⁺ @200cc	8 ⁺ @200cc	8 ⁺ @200cc	



SIGNATURE
 AUTHORIZED SIGNATORY

SIGNATURE OF OWNER
 AUTHORIZED SIGNATORY OF KANCHANJANGA INTEGRATED INFRASTRUCTURE DEVELOPMENT PRIVATE LIMITED.

SIGNATURE OF ARCHITECT

THE STRUCTURAL DESIGN & DRAWINGS OF BOTH FOUNDATION & SUPERSTRUCTURE OF THE BUILDING HAS BEEN MADE BY CONSIDERING ALL POSSIBLE LOADS INCLUDING THE SEISMIC LOAD AS PER NATIONAL BUILDING CODE & CERTIFIED THAT IT IS SAFE & STABLE IN ALL RESPECT. ARCHITECT SHALL BE HELD RESPONSIBLE FOR ANY STRUCTURE DAMAGE OR FAILURE IF HAPPENED DURING CONSTRUCTION PERIOD & THEREAFTER BEYOND THE DATE OF TAKING COMPLETION CERTIFICATE.

SIGNATURE OF STRUCTURAL ENGINEER
 CLIENT:
KANCHANJANGA INTEGRATED INFRASTRUCTURE DEVELOPMENT PRIVATE LIMITED.
 PRINCIPAL ARCHITECT / CONSULTANT

ARCHITECTS: **MAHESHWARI & ASSOCIATES**
 37A BAKER ROAD, 2ND FLOOR, ALIPORE, KOLKATA-700027.
 Tel: 85334966, 65225534.

STRUCTURAL CONSULTANT:-
SINHA & ASSOCIATES
 ENGINEERS & DESIGN CONSULTANTS
 157, BINOSA BHAVE ROAD, KOL - 700030
 PH. NO. - 2407-4068
 E-mail - sands @ cal2.vsnl.net.in

DATE: 28.12.2016
 SCALE: 1:1000/100, 50, 30, 25, 20
 DWG NO: S&A/KANCHANJANGA/CRPN/ST-202
 REV-01