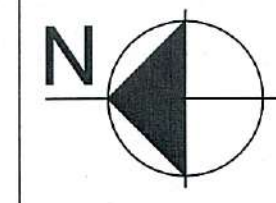


**PROJECT**  
**PROPOSED G+12 STOREY AFFORDABLE HOUSING UNDER PRADHAN MANTRI AWAS YOJANA AT MUNICIPAL HOLDING NO. 29 , KANAILAL GOSWAMI SARANI (PREVIOUSLY KNOWN AS RAILAND ROAD), UNDER CIRCLE NO. 'F', OF THE SERAMPORE MUNICIPALITY COMPRISED IN L.R. DAG NOS. 2501, 2502, 2503, 2504, 2528, 2573, 2574, 2575, 2576, 2577, 2578, 2579, 2580, 2581, 2582, 2583, 2584, 2585, 2590, 2594, 2596, 2597, 2642, 2643,**  
**MOUZA: MAHESH, P.S. SERAMPORE, J.L.: 15, L.R. KHATHAN NO. 11337, P.O. SERAMPORE, PIN: 712201, DISTRICT HOOGHLY, WEST BENGAL.**

**TITLE**  
**COLUMN SCHEDULE FOR ALL BLOCK & TYPICAL BEAM COLUMN JUNCTION**



- ALL DIMENSIONS ARE IN MM EXCEPT NOTED.
- GRADE OF CONCRETE M40/M30
- GRADE OF STEEL Fe500

**EDEN REALTY VENTURES PVT. LTD.**  
*Amey*  
 Director

**CONSTITUTED ATTORNEY OF PYRAMID ENCLAVE (P) LTD.**

**SIGNATURE OF OWNER**  
 WE DO HEREBY CERTIFY THAT THE FOUNDATION AND SUPERSTRUCTURE OF THE BUILDING PROPOSED FOR CONSTRUCTION AT MUNICIPAL HOLDING NO.29,K.L.GOSWAMI SARANI, UNDER CIRCLE NO. 'F' OF THE SERAMPORE MUNICIPALITY COMPRISED IN L.R. DAG NOS. 2501, 2502, 2503, 2504, 2528, 2573, 2574, 2575, 2576, 2577, 2578, 2579, 2580, 2581, 2582, 2583, 2584, 2585, 2590, 2594, 2596, 2597, 2642, 2643, MOUZA: MAHESH, P.S. SERAMPORE, J.L.: 15, L.R. KHATHAN NO. 11337, P.O. SERAMPORE, PIN: 712201, DISTRICT HOOGHLY, WEST BENGAL, HAVE BEEN SO DESIGNED BY MEASUREMENTS WILL MAKE SUCH FOUNDATION AND SUPERSTRUCTURE SAFE IN ALL RESPECT INCLUDING THE CONSIDERATION OF BEARING CAPACITY AND SETTLEMENT OF SOIL ETC.

*Malay Kumar Ghosh*  
**MALAY KUMAR GHOSH**  
 Regn. No. CA/92/14854  
 35A, Dr. Sarat Banerjee Road  
 Kolkata - 700 029

**SIGNATURE OF ARCHITECT**  
**MALAY KUMAR GHOSH**  
 REGN. NO. CA/92/14854  
 35A, DR. SARAT BANERJEE ROAD, KOLKATA-700 029  
 KMC ENLISTMENT NO.180(A)

*Bibek Bikash Mullick*  
**BIBEK BIKASH MULLICK**  
 E.S.E. - 1/75  
 KOLKATA MUNICIPAL CORPORATION

*K. Sengupta*  
**KOUSHIK SENGUPTA**  
 B.E.(CIVIL), M.R. (STRUCTURE)  
 ESE - 1/76 (K.M.C.)

**SIGNATURE OF STRUCTURAL ENGINEER**  
**BIBEK BIKASH MULLICK**

*Alok Roy*  
**ALOK ROY**  
 Engg. & Technological Engineer  
 Kolkata Municipal Corporation  
 Class-4, No.- 67/V/11  
 6A, MILON PARK,  
 KOLKATA-700 084

**SIGNATURE OF GEOTECHNICAL ENGINEER**  
**GEOTEST ENGINEERS PVT.LTD.**  
 ALOK ROY  
 GTE - 1/11  
 6A, MILON PARK, GARIA, KOLKATA-700084.

**DESIGNED-BBM** REF.  
**CHECKED-BBM** SCALE : 1:250,1:25  
**DEALT - P.P** DATE : 03.08.2018  
**DRG. NO-PMC/MUN/ST/SERAMPORE/02**

**STRUCTURAL CONSULTANT**  
**P M CONSULTANT**  
 35A, DR. SARAT BANERJEE ROAD, KOL.-29  
 PHONE- 9830461784,  
 e-mail- bibekbm@rediffmail.co

**ESPACE**  
 35-A, DR. SARAT BANERJEE ROAD, KOLKATA-700029  
 TeleFax : 91-33-2465-4130 / 4159  
 e-mail : espace@vsnl.net  
 WEBSITE : www.espaceindia.com

**COLUMN SCHEDULE FOR TOWER -1**

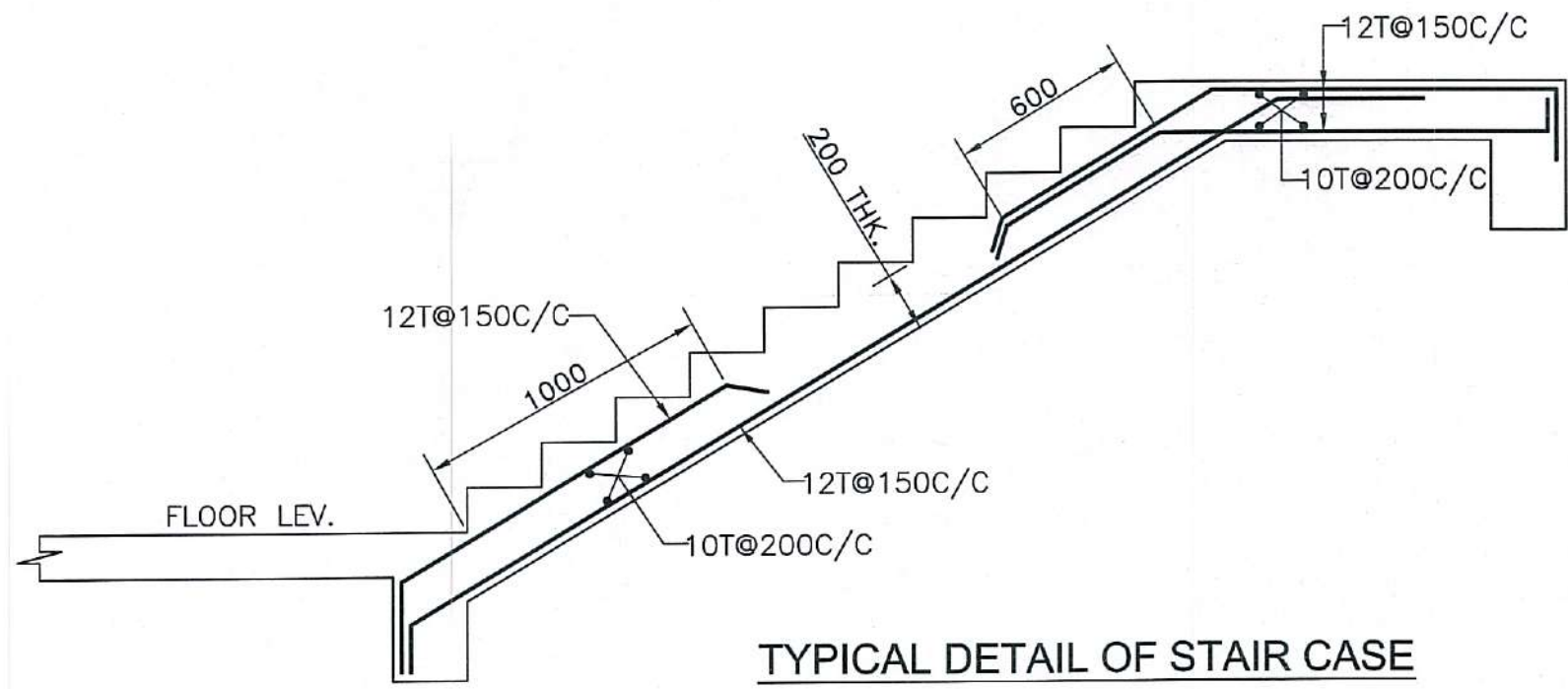
COLUMN MKD.	COL. SIZE	FOUNDATION TO FIRST FLOOR	FIRST FLOOR TO 3RD. FLOOR	3RD. FLOOR TO 5TH. FLOOR	5TH. FLOOR TO 7TH. FLOOR	7TH. FLOOR TO 9TH. FLOOR	9TH. FLOOR TO 11TH. FLOOR	11TH. FLOOR TO ROOF
C2,C3,C7,C52, C28,C33,C79,C80	(200X750 X750)	12-25T	12-25T	8-25T+4-20T	4-25T+8-20T	12-20T	8-20T+4-16T	4-20T+8-16T
C7,C8,C9,C10,C11, C12,C13,C14,C16, C17,C39,C31,C41, C42,C57,C58,C24, C25,C37,C38,C49, C50,C55,C56,C58, C69,C70,C71,C72, C73,C74,C75	(200X1000)	(12-20T +12T@150C/C)	(12-20T +12T@150C/C)	(12-20T +12T@150C/C)	(12-16T +12T@150C/C)	(12-16T +12T@150C/C)	(12-16T +12T@150C/C)	(12-16T +12T@150C/C)
C19,C63	(200X1450)	(12-20T +12T@150C/C)	(12-20T +12T@150C/C)	(12-20T +12T@150C/C)	(12-16T +12T@150C/C)	(12-16T +12T@150C/C)	(12-16T +12T@150C/C)	(12-16T +12T@150C/C)
C18,C20,C21,C22, C32,C43,C59,C23, C36,C48,C64,C60, C61,C62,C33,C47	(200X1000)	(12-20T +12T@150C/C)	(12-20T +12T@150C/C)	(12-20T +12T@150C/C)	(12-16T +12T@150C/C)	(12-16T +12T@150C/C)	(12-16T +12T@150C/C)	(12-16T +12T@150C/C)
C35,C46	(200X750 X750)	12-25T	12-25T	8-25T+4-20T	4-25T+8-20T	12-20T	8-20T+4-16T	4-20T+8-16T
C44,C45,C54, C55	(200X750 X750)	12-25T	12-25T	8-25T+4-20T	4-25T+8-20T	12-20T	8-20T+4-16T	4-20T+8-16T
CONCRETE GRADE:-		M-40	M-30	M-30	M-30	M-30	M-30	M-30
STIRRUP-BT (AS PER BEAM COLUMN JUNCTION)								

**COLUMN SCHEDULE FOR TOWER -3**

COLUMN MKD.	COL. SIZE	FOUNDATION TO FIRST FLOOR	FIRST FLOOR TO 3RD. FLOOR	3RD. FLOOR TO 5TH. FLOOR	5TH. FLOOR TO 7TH. FLOOR	7TH. FLOOR TO 9TH. FLOOR	9TH. FLOOR TO 11TH. FLOOR	11TH. FLOOR TO ROOF
C2,C3,C5,C6,C15, C16,C17,C18,C33, C36,C38,C41,C42, C45,C47,C50,C54, C51,C59,C55,C53, C60,C65,C68	(200X1200)	(12-20T +12T@150C/C)	(12-20T +12T@150C/C)	(12-20T +12T@150C/C)	(12-16T +12T@150C/C)	(12-16T +12T@150C/C)	(12-16T +12T@150C/C)	(12-16T +12T@150C/C)
C7,C8,C9,C10,C11, C12,C14,C34,C35, C39,C40,C43,C44, C48,C49,C52,C53, C57,C58,C61,C62, C66,C67	(200X1200)	(12-20T +12T@150C/C)	(12-20T +12T@150C/C)	(12-20T +12T@150C/C)	(12-20T +12T@150C/C)	(12-20T +12T@150C/C)	(12-20T +12T@150C/C)	(12-20T +12T@150C/C)
C1,C4,C37,C48, C55,C64	(200X1550)	(12-20T +12T@150C/C)	(12-20T +12T@150C/C)	(12-20T +12T@150C/C)	(12-16T +12T@150C/C)	(12-16T +12T@150C/C)	(12-16T +12T@150C/C)	(12-16T +12T@150C/C)
C19,C20,C21,C22, C27,C28,C29,C30, C31,C32	(200X750 X750)	12-25T	12-25T	8-25T+4-20T	4-25T+8-20T	12-20T	8-20T+4-16T	4-20T+8-16T
CONCRETE GRADE:-		M-40	M-30	M-30	M-30	M-30	M-30	M-30
STIRRUP-BT (AS PER BEAM COLUMN JUNCTION)								

**COLUMN SCHEDULE FOR TOWER -5**

COLUMN MKD.	COL. SIZE	FOUNDATION TO FIRST FLOOR	FIRST FLOOR TO 3RD. FLOOR	3RD. FLOOR TO 5TH. FLOOR	5TH. FLOOR TO 7TH. FLOOR	7TH. FLOOR TO 9TH. FLOOR	9TH. FLOOR TO 11TH. FLOOR	11TH. FLOOR TO ROOF
C1,C2,C30, C37	(200X750 X750)	12-25T	12-25T	8-25T+4-20T	4-25T+8-20T	12-20T	8-20T+4-16T	4-20T+8-16T
C2,C3,C5,C6,C7, C8,C21,C37,C47, C59	(200X1000)	(12-20T +12T@150C/C)	(12-20T +12T@150C/C)	(12-20T +12T@150C/C)	(12-16T +12T@150C/C)	(12-16T +12T@150C/C)	(12-16T +12T@150C/C)	(12-16T +12T@150C/C)
C9,C10,C11,C12, C13,C14,C15,C16, C22,C23,C38,C39, C48,C49,C60,C61	(200X1200)	(12-20T +12T@150C/C)	(12-20T +12T@150C/C)	(12-20T +12T@150C/C)	(12-20T +12T@150C/C)	(12-20T +12T@150C/C)	(12-20T +12T@150C/C)	(12-20T +12T@150C/C)
C24,C63	(200X1450)	(12-20T +12T@150C/C)	(12-20T +12T@150C/C)	(12-20T +12T@150C/C)	(12-16T +12T@150C/C)	(12-16T +12T@150C/C)	(12-16T +12T@150C/C)	(12-16T +12T@150C/C)
C17,C18,C19,C20, C24,C29,C40,C50, C52	(200X1000)	(12-20T +12T@150C/C)	(12-20T +12T@150C/C)	(12-20T +12T@150C/C)	(12-16T +12T@150C/C)	(12-16T +12T@150C/C)	(12-16T +12T@150C/C)	(12-16T +12T@150C/C)
C28,C45,C56, C66,C79,C80, C81,C84	(200X1000)	(12-20T +12T@150C/C)	(12-20T +12T@150C/C)	(12-20T +12T@150C/C)	(12-16T +12T@150C/C)	(12-16T +12T@150C/C)	(12-16T +12T@150C/C)	(12-16T +12T@150C/C)
C31,C58,C82, C85	(200X750 X750)	12-25T	12-25T	8-25T+4-20T	4-25T+8-20T	12-20T	8-20T+4-16T	4-20T+8-16T
C26,C27,C43,C44, C54,C55,C64,C65, C71,C72,C73,C74, C75,C76,C77,C78	(200X1200)	(12-20T +12T@150C/C)	(12-20T +12T@150C/C)	(12-20T +12T@150C/C)	(12-20T +12T@150C/C)	(12-20T +12T@150C/C)	(12-20T +12T@150C/C)	(12-20T +12T@150C/C)
C42,C45,C54,C59, C67,C68,C69,C70	(200X1000)	(12-20T +12T@150C/C)	(12-20T +12T@150C/C)	(12-20T +12T@150C/C)	(12-16T +12T@150C/C)	(12-16T +12T@150C/C)	(12-16T +12T@150C/C)	(12-16T +12T@150C/C)
C32,C33,C34,C35	(200X750 X750)	(12-25T)	(12-25T)	(8-25T+4-20T)	(4-25T+8-20T)	(12-20T)	(8-20T+4-16T)	(4-20T+8-16T)
C51,C52	(200X750 X750)	(12-25T)	(12-25T)	(8-25T+4-20T)	(4-25T+8-20T)	(12-20T)	(8-20T+4-16T)	(4-20T+8-16T)
CONCRETE GRADE:-		M-40	M-30	M-30	M-30	M-30	M-30	M-30
STIRRUP-BT (AS PER BEAM COLUMN JUNCTION)								



**COLUMN SCHEDULE FOR TOWER -2**

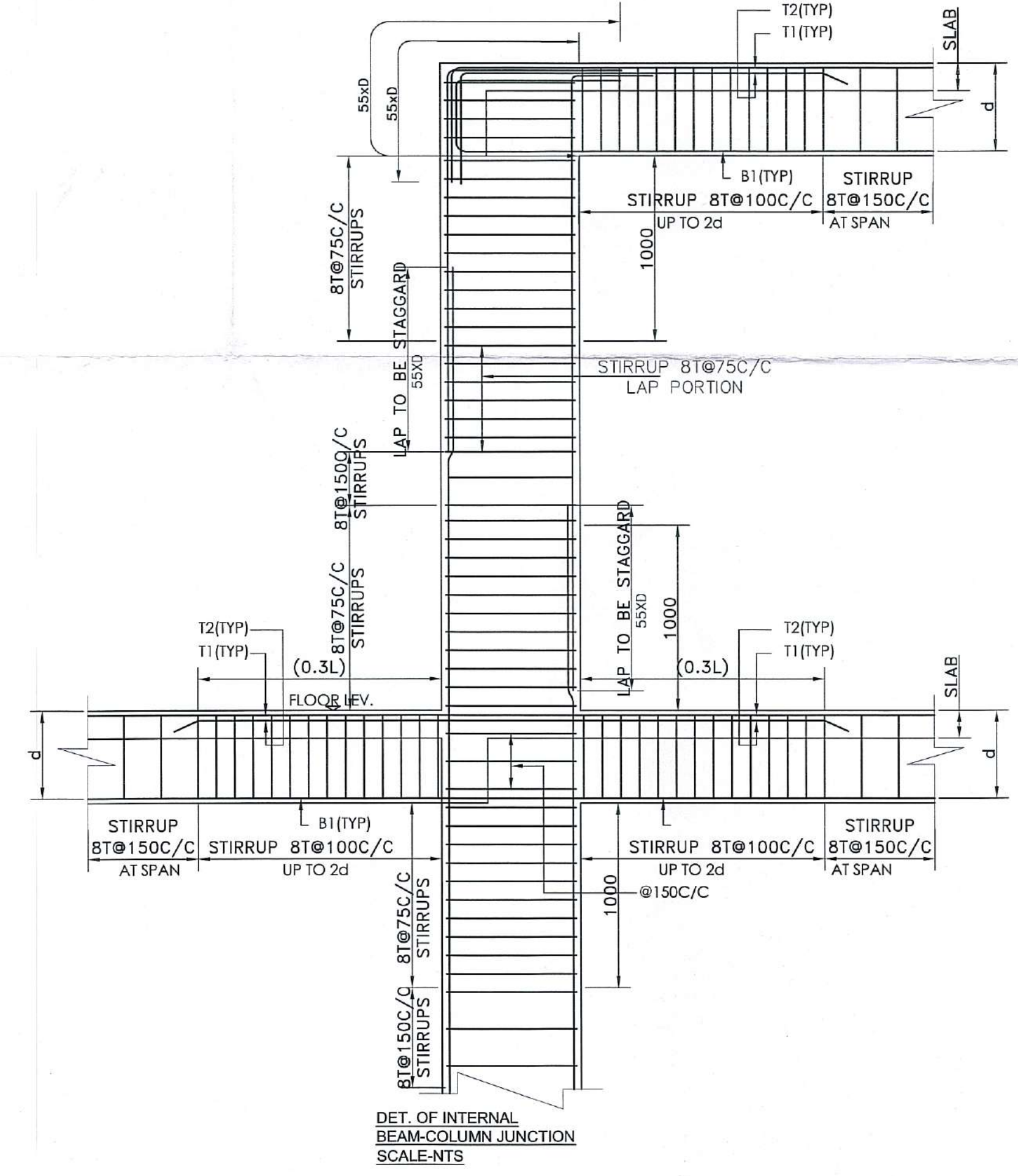
COLUMN MKD.	COL. SIZE	FOUNDATION TO FIRST FLOOR	FIRST FLOOR TO 3RD. FLOOR	3RD. FLOOR TO 5TH. FLOOR	5TH. FLOOR TO 7TH. FLOOR	7TH. FLOOR TO 9TH. FLOOR	9TH. FLOOR TO 11TH. FLOOR	11TH. FLOOR TO ROOF
C2,C3,C5,C6,C17, C19,C20,C22,C29, C34,C38,C43,C32, C37,C41,C46,C64, C59,C53,C50,C47, C55,C56,C61	(200X1200)	(12-20T +12T@150C/C)	(12-20T +12T@150C/C)	(12-20T +12T@150C/C)	(12-16T +12T@150C/C)	(12-16T +12T@150C/C)	(12-16T +12T@150C/C)	(12-16T +12T@150C/C)
C1,C4,C33,C42, C51,C60	(200X1550)	(12-20T +12T@150C/C)	(12-20T +12T@150C/C)	(12-20T +12T@150C/C)	(12-16T +12T@150C/C)	(12-16T +12T@150C/C)	(12-16T +12T@150C/C)	(12-16T +12T@150C/C)
C7,C8,C9,C10,C11, C12,C13,C14,C30, C31,C35,C36,C39, C40,C44,C45,C48, C49,C53,C54,C57, C58,C62,C63	(200X1200)	(12-20T +12T@150C/C)	(12-20T +12T@150C/C)	(12-20T +12T@150C/C)	(12-20T +12T@150C/C)	(12-20T +12T@150C/C)	(12-20T +12T@150C/C)	(12-20T +12T@150C/C)
C15,C16	(200X750 X750)	12-25T	12-25T	8-25T+4-20T	4-25T+8-20T	12-20T	8-20T+4-16T	4-20T+8-16T
C18,C21,C23,C24, C25,C26,C27,C28, C65,C66,C67,C68	(200X750 X750)	12-25T	12-25T	8-25T+4-20T	4-25T+8-20T	12-20T	8-20T+4-16T	4-20T+8-16T
CONCRETE GRADE:-		M-40	M-30	M-30	M-30	M-30	M-30	M-30
STIRRUP-BT (AS PER BEAM COLUMN JUNCTION)								

**COLUMN SCHEDULE FOR TOWER -4**

COLUMN MKD.	COL. SIZE	FOUNDATION TO FIRST FLOOR	FIRST FLOOR TO 3RD. FLOOR	3RD. FLOOR TO 5TH. FLOOR	5TH. FLOOR TO 7TH. FLOOR	7TH. FLOOR TO 9TH. FLOOR	9TH. FLOOR TO 11TH. FLOOR	11TH. FLOOR TO ROOF
C1,C2,C3,C6,C26, C32,C15,C18,C19, C20,C21,C23,C25, C38,C29,C30,C55, C38,C41,C42,C43, C44,C45,C46,C55, C58,C59,C60	(200X1200)	(12-20T +12T@150C/C)	(12-20T +12T@150C/C)	(12-20T +12T@150C/C)	(12-16T +12T@150C/C)	(12-16T +12T@150C/C)	(12-16T +12T@150C/C)	(12-16T +12T@150C/C)
C7,C8,C9,C10,C11, C12,C13,C14,C16, C17,C27,C28,C33, C34,C39,C40,C47, C48,C49,C50,C51, C52,C53,C54	(200X1200)	(12-20T +12T@150C/C)	(12-20T +12T@150C/C)	(12-20T +12T@150C/C)	(12-16T +12T@150C/C)	(12-16T +12T@150C/C)	(12-16T +12T@150C/C)	(12-16T +12T@150C/C)
C4,C5,C22,C37, C56,C57	(200X1550)	(12-20T +12T@150C/C)	(12-20T +12T@150C/C)	(12-20T +12T@150C/C)	(12-16T +12T@150C/C)	(12-16T +12T@150C/C)	(12-16T +12T@150C/C)	(12-16T +12T@150C/C)
C3,C24	(200X750 X750)	12-25T	12-25T	8-25T+4-20T	4-25T+8-20T	12-20T	8-20T+4-16T	4-20T+8-16T
C61,C62,C63, C64,C66,C67	(500X500)	12-25T	12-25T	8-25T+4-20T	4-25T+8-20T	12-20T	8-20T+4-16T	4-20T+8-16T
CONCRETE GRADE:-		M-40	M-30	M-30	M-30	M-30	M-30	M-30
STIRRUP-BT (AS PER BEAM COLUMN JUNCTION)								

**COLUMN SCHEDULE FOR TOWER -6**

COLUMN MKD.	COL. SIZE	FOUNDATION TO FIRST FLOOR	FIRST FLOOR TO 3RD. FLOOR	3RD. FLOOR TO 5TH. FLOOR	5TH. FLOOR TO 7TH. FLOOR	7TH. FLOOR TO 9TH. FLOOR	9TH. FLOOR TO 11TH. FLOOR	11TH. FLOOR TO ROOF
C1,C2,C7,C9,C12	(200X750 X750)	12-25T	12-25T	8-25T+4-20T	4-25T+8-20T	12-20T	8-20T+4-16T	4-20T+8-16T
C3,C6,C8,C10, C11,C14,C15,C18	(200X1000)	(12-20T +12T@150C/C)	(12-20T +12T@150C/C)	(12-20T +12T@150C/C)	(12-16T +12T@150C/C)	(12-16T +12T@150C/C)	(12-16T +12T@150C/C)	(12-16T +12T@150C/C)
C4,C5,C13,C16,C17	(200X1200)	(12-20T +12T@150C/C)	(12-20T +12T@150C/C)	(12-20T +12T@150C/C)	(12-20T +12T@150C/C)	(12-20T +12T@150C/C)	(12-20T +12T@150C/C)	(12-20T +12T@150C/C)
CONCRETE GRADE:-		M-40	M-30	M-30	M-30	M-30	M-30	M-30
STIRRUP-BT (AS PER BEAM COLUMN JUNCTION)								



1. Plan No. 749 of 2018-19  
Permission for the new construction as  
proposed and shown in the plan is granted  
vide SI No. B.O.C. 8 and corresponding  
B.O.C. Meeting Dt. 28.9.2018  
Dated.....Chairman.....28/9/18

Serampore Municipality

1. This plan is valid for three years and may  
be revaluated for the further two years on  
payment of necessary charges with production  
of original plan allowing with prescribed form.  
2. Within one month after the completion of new  
construction or a suitable portion thereof, the  
owner must be informed this to the Municipal  
Authority for interim assessment on a prescribed  
form.

*Nikhil Kumar*  
Technical Advisor & Consulting Engineer  
Retd. Chief Engineer M.E.D.A.R.  
Serampore Municipality

*Ambarish Chakrabarty*  
Urban Infrastructure Expert  
Serampore Municipality  
CONSTITUTED ATTORNEY  
PYRAMID ENGINEERS (P) LTD.