

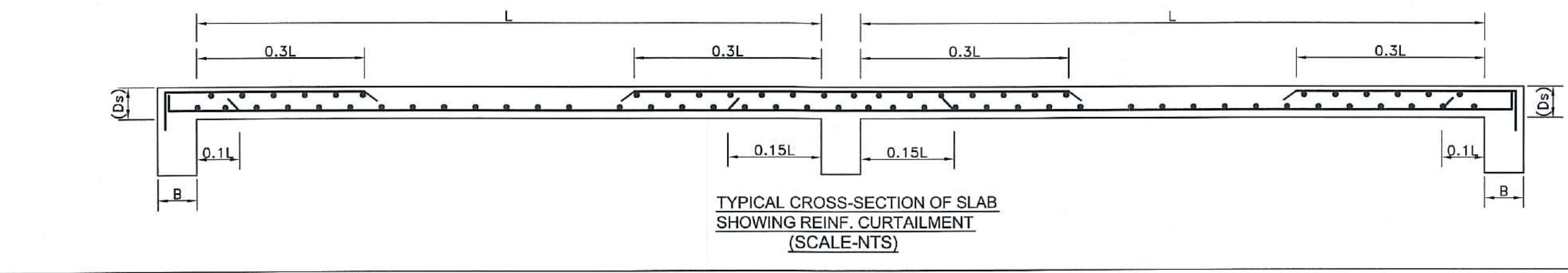
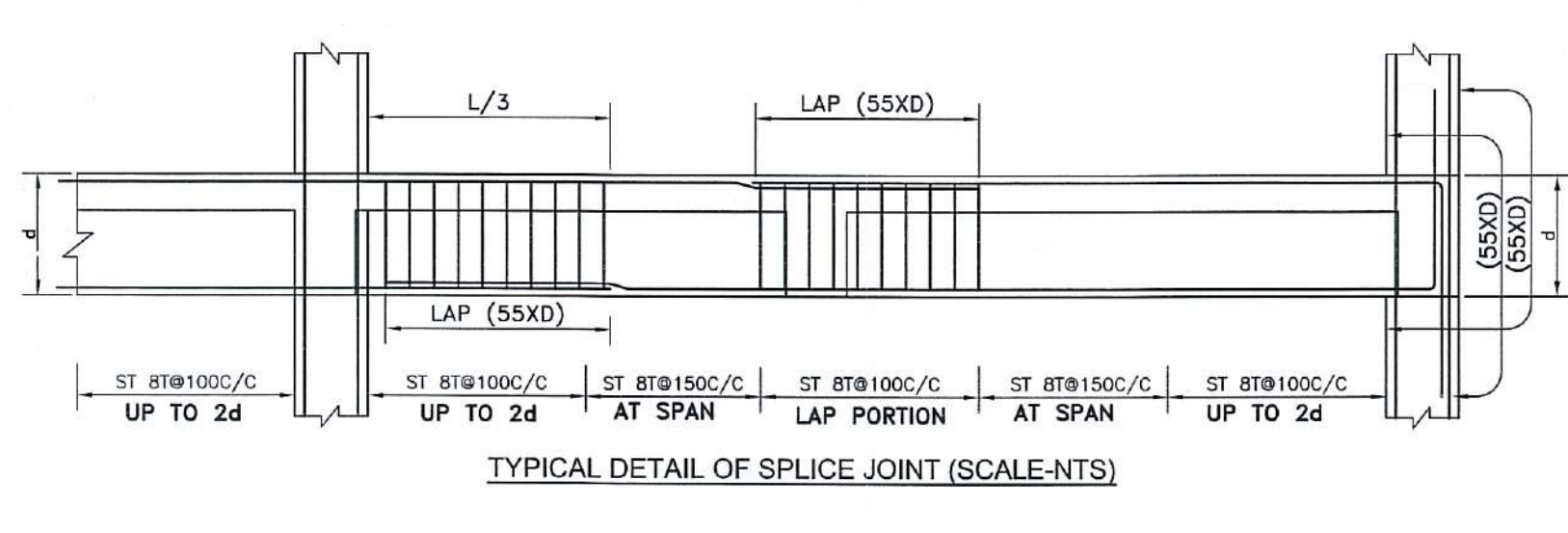
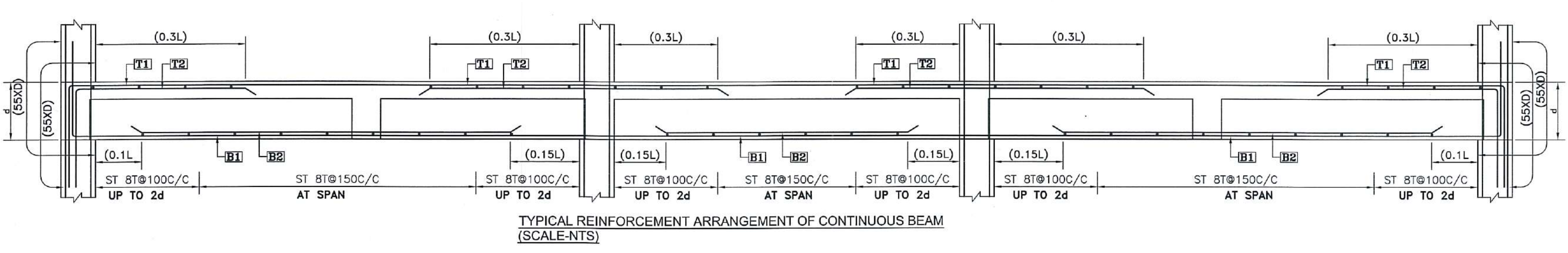
G.A. AT TYPICAL FLOOR LEVEL
(ALL SLAB 125 THK.)
TOWER-2

BEAM SCHEDULE FOR TOWER-2

BEAM MKD.	BEAM SIZE	SUPPORT REINFORCEMENT			SPAN REINFORCEMENT		
		TOP	BOTTOM	STIRRUPS	TOP	BOTTOM	STIRRUPS
BM-1	200X600	3-25T +3-16T	3-25T	8T@100CC	2-25T +3-16T	8T@150CC	
BM-2	200X600	3-20T +3-16T	3-20T	8T@100CC	2-20T +3-20T	8T@150CC	
BM-3,8,11	200X400	2-16T	3-20T	8T@100CC	2-16T +3-20T	8T@150CC	
BM-4	200X600	3-20T	3-25T	8T@100CC	3-25T +3-25T	8T@150CC	
BM-4A	200X500	2-16T	3-16T	8T@100CC	2-16T +3-16T	8T@150CC	
BM-5	200X600	3-25T +3-20T	3-25T	8T@100CC	2-25T +3-20T	8T@150CC	
BM-6	200X600	2-16T	3-20T	8T@100CC	2-16T +3-20T	8T@150CC	
BM-7	200X400	2-16T	3-20T	8T@100CC	2-16T +3-20T	8T@150CC	
BM-8	200X500	3-20T	3-20T	8T@100CC	2-20T +3-20T	8T@150CC	
BM-9	200X600	3-25T +3-20T	3-25T	8T@100CC	2-25T +3-16T	8T@150CC	
BM-10	200X600	3-20T +3-20T	3-25T	8T@100CC	2-25T +3-25T	8T@150CC	
BM-11	200X400	2-16T	3-20T	8T@100CC	2-16T +3-20T	8T@150CC	
BM-11A	200X600	3-25T +3-16T	3-25T	8T@100CC	2-25T +3-16T	8T@150CC	
BM-12	200X600	3-20T	3-25T	8T@100CC	3-25T +3-20T	8T@150CC	
BM-13	200X400	2-16T	3-16T	8T@100CC	2-16T +3-16T	8T@150CC	
BM-14	200X600	3-25T +3-20T	3-25T	8T@100CC	2-25T +3-20T	8T@150CC	
BM-15	200X600	3-25T +3-20T	3-25T	8T@100CC	2-25T +3-20T	8T@150CC	
BM-16	200X400	2-16T	3-16T	8T@100CC	2-16T +3-16T	8T@150CC	
BM-17	200X600	3-25T +3-16T	3-25T	8T@100CC	2-25T +3-16T	8T@150CC	
BM-18	200X600	3-25T +3-16T	3-25T	8T@100CC	2-25T +3-16T	8T@150CC	
BM-19	200X500	3-20T	3-20T	8T@100CC	3-20T +3-20T	8T@150CC	
BM-20	200X500	3-20T +3-16T	3-20T	8T@100CC	2-20T +3-16T	8T@150CC	
BM-21	200X500	3-20T +3-16T	3-20T	8T@100CC	2-20T +3-16T	8T@150CC	
FC-1	100X800	2-12T	2-12T	8T@150CC	2-12T +3-16T	8T@150CC	

SLAB SCHEDULE

SLAB THK.	SHORT SPAN		LONG SPAN	
	SUPPORT TOP	MID SPAN BOTTOM	SUPPORT TOP	MID SPAN BOTTOM
150	10# @150C/C	10# @200C/C	10# @150C/C	10# @150C/C
125	8# @150C/C	8# @150C/C	8# @150C/C	8# @150C/C



PROJECT
PROPOSED G+12 STOREY AFFORDABLE HOUSING UNDER PRADHAN MANTRI AWAS YOJANA AT MUNICIPAL HOLDING NO. 29, KANAILAL GOSWAMI SARANI (PREVIOUSLY KNOWN AS RAILAND ROAD), UNDER CIRCLE NO. 'F', OF THE SERAMPORE MUNICIPALITY COMPRISED IN L.R. DAG NOS. 2501, 2502, 2503, 2504, 2528, 2573, 2574, 2575, 2576, 2577, 2578, 2579, 2580, 2581, 2582, 2583, 2584, 2585, 2590, 2594, 2596, 2597, 2642, 2643, MOUZA: MAHESH, P.S. SERAMPORE, J.L.: 15, L.R. KHATIAN NO. 11337, P.O. SERAMPORE, PIN: 712201, DISTRICT HOOGHLY, WEST BENGAL.

TITLE
GA. OF TYPICAL FLOOR, FLOOR BEAM & SLAB SCHEDULE (TOWER-2)

- ALL DIMENSIONS ARE IN MM EXCEPT NOTED.
- GRADE OF CONCRETE M40/M30
- GRADE OF STEEL Fe500

EDEN REALTY VENTURES PVT. LTD.
 Director
CONSTITUTED ATTORNEY OF PYRAMID ENCLAVE (P) LTD.

SIGNATURE OF OWNER
 WE DO HEREBY CERTIFY THAT THE FOUNDATION AND SUPERSTRUCTURE OF THE BUILDING PROPOSED FOR CONSTRUCTION AT MUNICIPAL HOLDING NO. 29, K.L. GOSWAMI SARANI, UNDER CIRCLE NO. 'F', OF THE SERAMPORE MUNICIPALITY COMPRISED IN L.R. DAG NOS. 2501, 2502, 2503, 2504, 2528, 2573, 2574, 2575, 2576, 2577, 2578, 2579, 2580, 2581, 2582, 2583, 2584, 2585, 2590, 2594, 2596, 2597, 2642, 2643, MOUZA: MAHESH, P.S. SERAMPORE, J.L.: 15, L.R. KHATIAN NO. 11337, P.O. SERAMPORE, PIN: 712201, DISTRICT HOOGHLY, WEST BENGAL HAVE BEEN SO DESIGNED BY MEALS WILL MAKE SUCH FOUNDATION AND SUPERSTRUCTURE SAFE IN ALL RESPECT INCLUDING THE CONSIDERATION OF BEARING CAPACITY AND SETTLEMENT OF SOIL ETC.

MALAY KUMAR GHOSH
 Regn. No. CA/92/14854
 35A, Dr. Sarat Banerjee Road, Kolkata - 700 029
 SIGNATURE OF ARCHITECT
 MALAY KUMAR GHOSH
 REGN. NO. CA/92/14854
 35A, DR. SARAT BANERJEE ROAD, KOLKATA-700 029
 KMC ENLISTMENT NO.180(A)

BIBEK BIKASH MULLICK
 E.S.E. - I/75
 KOLKATA MUNICIPAL CORPORATION
 SIGNATURE OF STRUCTURAL ENGINEER
 BIBEK BIKASH MULLICK

ALOK ROY
 Empowered Geotechnical Engineer
 Kolkata Municipal Corporation
 Class-I, No.- C/1/11
 SIGNATURE OF GEOTECHNICAL ENGINEER
 GEOTECH ENGINEERS PVT.LTD.
 ALOK ROY
 GTE - 1/11
 6A, MILON PARK, GARIA, KOLKATA-700084.

DESIGNED-BBM REF.
 CHECKED-BBM SCALE : 1:250,1:25
 DEALT - P.P DATE : 03.08.2018
 DRG. NO-PMC/MUN/ST/SERAMPORE/04

STRUCTURAL CONSULTANT
P M CONSULTANT
 35A, DR. SARAT BANERJEE ROAD, KOL-29
 PHONE- 9830461784,
 e-mail- bibekbm@rediffmail.co

ESPACE
 35-A, DR. SARAT BANERJEE ROAD, KOLKATA-700029
 TeleFax : 91-33-2465-4130 / 4159
 e-mail : espace@vsnl.net
 WEBSITE : www.espaceindia.com

Petition No. 749 of 2018-19
 Permission for the new construction as
 proposed and shown in the plan is granted
 Vide SI No. 1028 and corresponding
 R.O.C. Meeting Dt. 28.9.2018
 Dated..... Chairman.....

Serampore Municipality

1. This plan is valid for three years and may
 be revalidated for the further two years on
 payment of necessary charges with production
 of original plan allowing with prescribed from.
 2. Within one month after the completion of new
 construction or a suitable portion thereof, the
 owner must be informed this to the Municipal
 Authority for interim assessment on a prescribed
 form.

CONSTITUTED ATTORNEY
 OF
 PYRAMID ENCLAVE (P) LTD.

Nirajan Ray's
 Technical Advisor & Consulting Engineer
 Retd. Chief Engineer M.E.C.T.R.
 Serampore Municipality

Chandrasit Chakrabarty
 Urban Infrastructure Expert
 Serampore Municipality