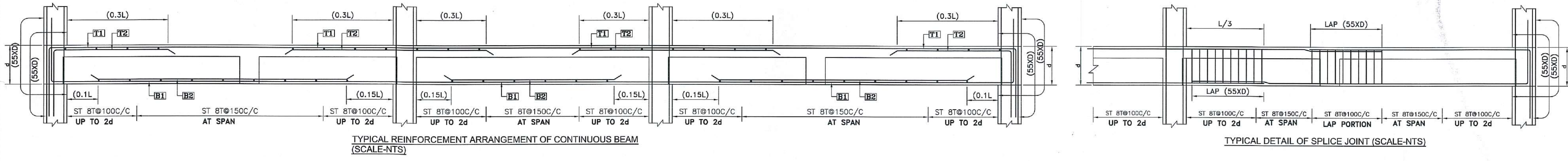
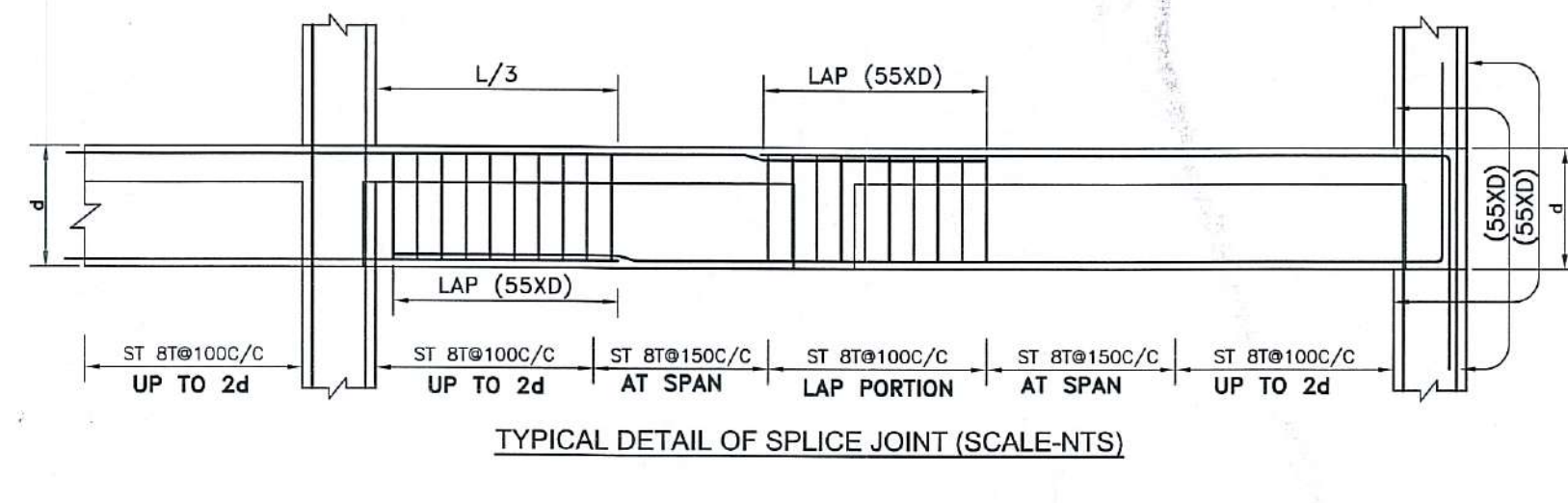


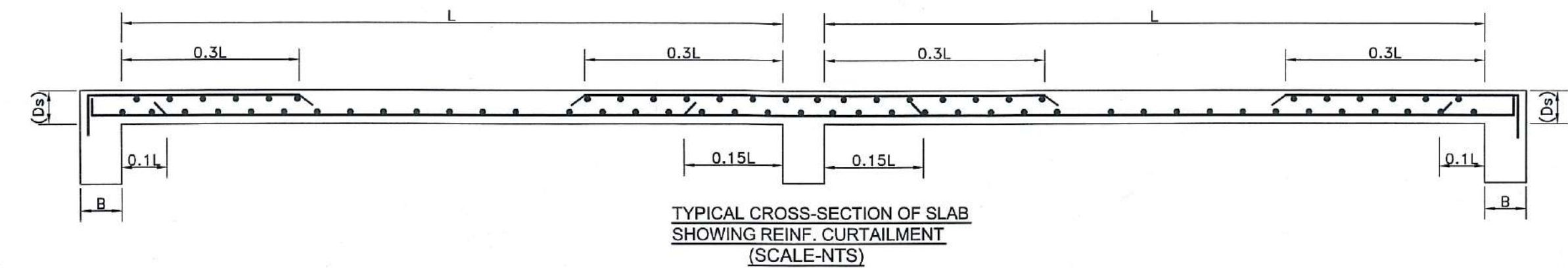
TYPICAL FLOOR GA (ALL SLAB 125 THK.)
TOWER-5



TYPICAL REINFORCEMENT ARRANGEMENT OF CONTINUOUS BEAM
(SCALE-NTS)



TYPICAL DETAIL OF SPLICE JOINT (SCALE-NTS)



TYPICAL CROSS-SECTION OF SLAB
SHOWING REINF. CURTAILMENT
(SCALE-NTS)

BEAM MKD.	BEAM SIZE	SUPPORT REINFORCEMENT			SPAN REINFORCEMENT		
		TOP	BOTTOM	STIRRUPS	TOP	BOTTOM	STIRRUPS
BM-1	200X600	3-25T +3-16T	3-25T	8T@100C/C	2-25T	3-25T +3-16T	8T@150C/C
BM-2,29,30,34	200X400	2-16T	3-16T	8T@100C/C	2-16T	3-16T	8T@150C/C
BM-3,26	200X600	3-25T +3-16T	3-25T	8T@100C/C	2-25T	3-25T +3-16T	8T@150C/C
BM-4,18,27	200X400	2-16T	3-16T	8T@100C/C	2-16T	3-16T	8T@150C/C
BM-5,28	200X400	2-16T	3-16T	8T@100C/C	2-16T	3-16T	8T@150C/C
BM-6	200X600	3-25T +3-16T	3-25T	8T@100C/C	2-25T	3-25T +3-16T	8T@150C/C
BM-7	200X600	3-25T +3-16T	3-25T	8T@100C/C	2-25T	3-25T +3-16T	8T@150C/C
BM-8	200X600	3-25T +3-16T	3-25T	8T@100C/C	2-25T	3-25T +3-16T	8T@150C/C
BM-9	200X600	3-25T +3-16T	3-20T	8T@100C/C	2-20T	3-20T	8T@150C/C
BM-10,21	200X600	3-20T +3-16T	3-20T	8T@100C/C	2-20T	3-20T	8T@150C/C
BM-11	200X500	3-16T	3-25T	8T@100C/C	3-16T	3-25T +2-16T	8T@150C/C
BM-12	200X400	2-16T	3-16T	8T@100C/C	2-16T	3-16T	8T@150C/C
BM-13,19	200X500	3-16T	3-25T	8T@100C/C	3-16T	3-25T +2-16T	8T@150C/C
BM-15	200X600	3-25T +3-20T	3-25T	8T@100C/C	2-25T	3-25T +3-16T	8T@150C/C
BM-16	200X600	3-25T +3-20T	3-25T	8T@100C/C	2-25T	3-25T +3-16T	8T@150C/C
BM-17	200X600	3-25T +3-16T	3-25T	8T@100C/C	2-25T	3-25T +3-16T	8T@150C/C
BM-20	200X400	2-16T	3-16T	8T@100C/C	2-16T	3-16T	8T@150C/C
BM-22	200X400	2-16T	3-16T	8T@100C/C	2-16T	3-16T	8T@150C/C
BM-23	200X600	3-25T +3-20T	3-25T	8T@100C/C	2-25T	3-25T +3-16T	8T@150C/C
BM-24	200X600	3-25T +3-16T	3-25T	8T@100C/C	2-25T	3-25T	8T@150C/C
BM-25	200X600	3-20T	3-25T	8T@100C/C	2-20T	3-25T +3-16T	8T@150C/C
BM-31	200X600	3-25T +3-20T	3-25T	8T@100C/C	2-25T	3-25T +3-16T	8T@150C/C
BM-32,33	200X600	3-25T +3-16T	3-20T	8T@100C/C	2-20T	3-20T	8T@150C/C
BM-35	200X400	3-16T	3-16T	8T@100C/C	3-16T	3-16T	8T@150C/C
BM-36	200X600	3-20T +3-16T	3-20T	8T@100C/C	2-20T	3-20T	8T@150C/C
BM-37	200X500	3-20T	3-16T	8T@100C/C	2-20T	3-16T	8T@150C/C
BM-38	200X500	3-20T	3-16T	8T@100C/C	3-20T	3-16T	8T@150C/C

SLAB THK.	SHORT SPAN		LONG SPAN	
	SUPPORT TOP	MID SPAN BOTTOM	SUPPORT TOP	MID SPAN BOTTOM
150	10# @150C/C	10# @200C/C	10# @150C/C	10# @150C/C
125	8# @150C/C	8# @150C/C	8# @150C/C	8# @150C/C

PROJECT
PROPOSED G+12 STOREY AFFORDABLE HOUSING UNDER PRADHAN MANTRI AWAS YOJANA AT MUNICIPAL HOLDING NO. 29, KANAILAL GOSWAMI SARANI (PREVIOUSLY KNOWN AS RAILAND ROAD), UNDER CIRCLE NO. 'F', OF THE SERAMPORE MUNICIPALITY COMPRISED IN L.R. DAG NOS. 2501, 2502, 2503, 2504, 2528, 2573, 2574, 2575, 2576, 2577, 2578, 2579, 2580, 2581, 2582, 2583, 2584, 2585, 2590, 2594, 2596, 2597, 2642, 2643, 2594, 2596, 2597, 2642, 2643, MOUZA: MAHESH, P.S. SERAMPORE, J.L.: 15, L.R. KHATIAN NO. 11337, P.O. SERAMPORE, PIN: 712201, DISTRICT HOOGHLY, WEST BENGAL.

TITLE
GA. OF TYPICAL FLOOR, FLOOR BEAM & SLAB SCHEDULE (TOWER-5)

- ALL DIMENSIONS ARE IN MM EXCEPT NOTED.
- GRADE OF CONCRETE M40/M30
- GRADE OF STEEL Fe500

EDEN REALTY VENTURES PVT. LTD.
Arjo Sengupta
 Director
CONSTITUTED ATTORNEY OF PYRAMID ENCLAVE (P) LTD.

SIGNATURE OF OWNER
 WE DO HEREBY CERTIFY THAT THE FOUNDATION AND SUPERSTRUCTURE OF THE BUILDING PROPOSED FOR CONSTRUCTION AT MUNICIPAL HOLDING NO.29,K.L.GOSWAMI SARANI, UNDER CIRCLE NO. 'F', OF THE SERAMPORE MUNICIPALITY COMPRISED IN L.R. DAG NOS. 2501, 2502, 2503, 2504, 2528, 2573, 2574, 2575, 2576, 2577, 2578, 2579, 2580, 2581, 2582, 2583, 2584, 2585, 2590, 2594, 2596, 2597, 2642, 2643, MOUZA: MAHESH, P.S. SERAMPORE, J.L.: 15, L.R. KHATIAN NO. 11337, P.O. SERAMPORE, PIN: 712201, DISTRICT HOOGHLY, WEST BENGAL HAVE BEEN SO DESIGNED BY ME/US WILL HAVE SUCH FOUNDATION AND SUPERSTRUCTURE SAFE IN ALL RESPECT INCLUDING THE CONSIDERATION OF BEARING CAPACITY AND SETTLEMENT OF SOIL ETC.

Malay Kumar Ghosh
 MALAY KUMAR GHOSH
 Regn. No. CA/92/14854
 35A, Dr. Sarat Banerjee Road
 Kolkata - 700 029
 SIGNATURE OF ARCHITECT
 MALAY KUMAR GHOSH
 REGN. NO. CA/92/14854
 35A, DR. SARAT BANERJEE ROAD, KOLKATA-700 029
 KMC ENLISTMENT NO.180(A)

Bibek Bikash Mullick
BIBEK BIKASH MULLICK
 E.S.E. - 1/75
 KOLKATA MUNICIPAL CORPORATION
Koushik Sengupta
KOUSHIK SENGUPTA
 R.E.(CIVIL), M.E. (STRUCTURE)
 ESE-1/75 (K.M.C.)
 Signature of Struc. Reviewer

SIGNATURE OF STRUCTURAL ENGINEER
BIBEK BIKASH MULLICK

Alok Roy
 ALOK ROY
 Registered Geotechnical Engineer
 Kolkata Municipal Corporation
 Class-1, Reg-01/11
 6A, MILON PARK, SERAMPORE
 KOLKATA-700 084
 SIGNATURE OF GEOTECHNICAL ENGINEER
GEOTEST ENGINEERS PVT.LTD.
 ALOK ROY
 GTE - 1/11
 6A, MILON PARK, GARIA, KOLKATA-700084,

DESIGNED-BBM	REF.
CHECKED-BBM	SCALE : 1:250,1:25
DEALT - P.P	DATE : 03.08.2018
DRG. NO-PMC/MUN/ST/SERAMPORE/07	

STRUCTURAL CONSULTANT
P M CONSULTANT
 35A, DR. SARAT BANERJEE ROAD, KOL-29
 PHONE- 9830461784,
 e-mail- bibekbm@rediffmail.co

ESPACE
 35-A, DR. SARAT BANERJEE ROAD, KOLKATA-700029
 TeleFax : 91-33-2465-4130 / 4159
 e-mail : espace@vsnl.net
 WEBSITE : www.espaceindia.com

749 2018-19
1. Permission for the new construction as proposed and shown in the plan is granted
Vide SI No. 885-8 and corresponding
B.O.C. Meeting D. 28.9.2018
Dated: 28/9/18 Chairman

Serampore Municipality

This plan is valid for three years and may be revalidated for the further two years on payment of necessary charges with production of original plan allowing with production of original plan allowing with prescribed from.
2. Within one month after the completion of new construction or a suitable portion there of, the owner must be informed this to the Municipal Authority for interim assessment on a prescribed form.

Niranjana Bera
Technical Advisor & Consulting Engineer
Retd. Chief Engineer M.E.M.R.
Serampore Municipality

Chandrayit Chakrabarty
Urban Infrastructure Expert
Serampore Municipality

CONSTITUTED ATTORNEY
OF
PYRAMID ENCLAVE (P) LTD.