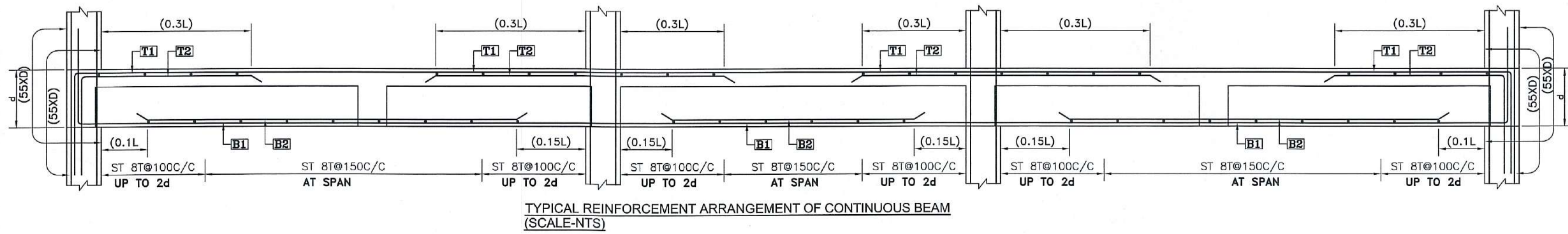
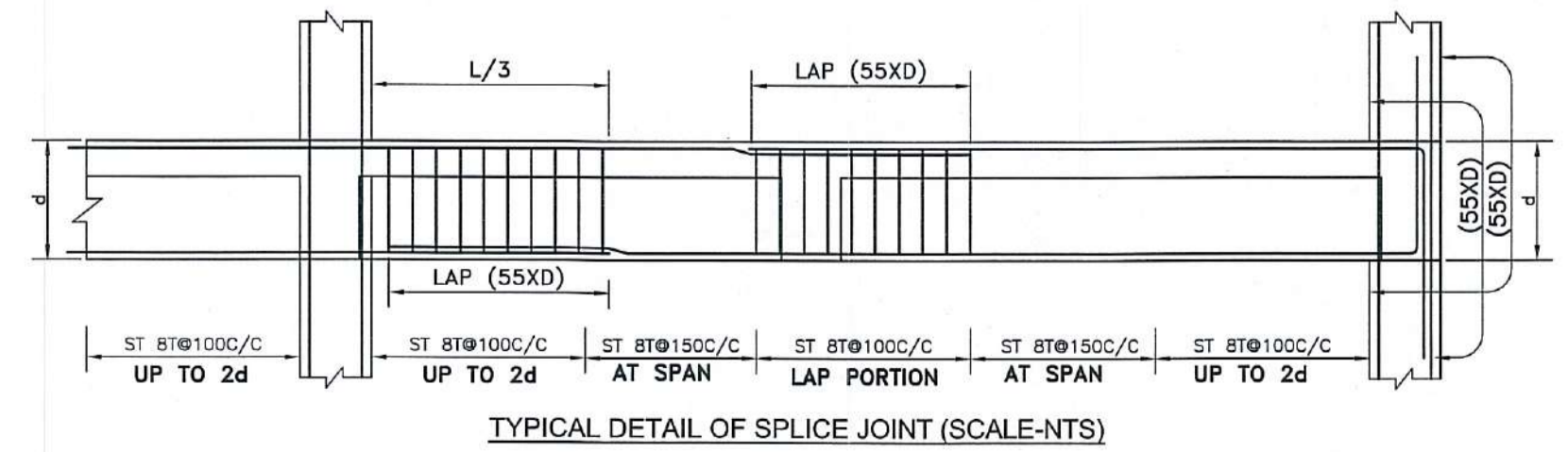


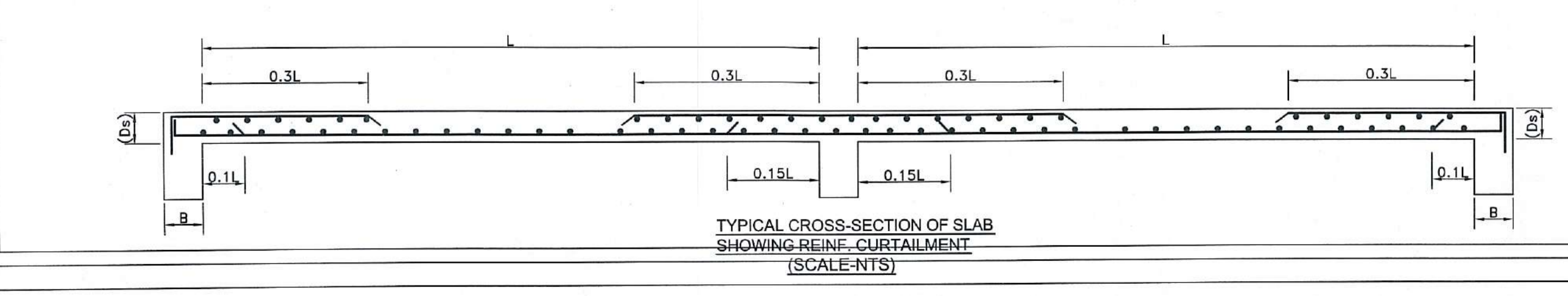
TYPICAL FLOOR GA (ALL SLAB 125 THK.)
TOWER-4



TYPICAL REINFORCEMENT ARRANGEMENT OF CONTINUOUS BEAM
(SCALE:NTS)



TYPICAL DETAIL OF SPLICE JOINT (SCALE:NTS)



TYPICAL CROSS-SECTION OF SLAB
SHOWING REINF. CURTAILMENT
(SCALE:NTS)

BEAM SCHEDULE FOR TOWER-4

BEAM MKD.	BEAM SIZE	SUPPORT REINFORCEMENT			SPAN REINFORCEMENT		
		TOP	BOTTOM	STIRRUPS	TOP	BOTTOM	STIRRUPS
BM-1	200x600	3-25T +3-16T	3-25T	8T@100C/C	2-25T	3-25T +3-16T	8T@150C/C
BM-2	200x600	3-20T +3-16T	3-20T	8T@100C/C	2-20T	3-20T	8T@150C/C
BM-3,6	200x400	2-16T	3-20T	8T@100C/C	2-16T	3-20T	8T@150C/C
BM-4	200x600	2-20T	3-25T	8T@100C/C	2-20T	3-25T	8T@150C/C
BM-4A,18	200x400	2-16T	3-16T	8T@100C/C	2-16T	3-16T	8T@150C/C
BM-5	200x600	3-25T +3-16T	3-25T	8T@100C/C	2-25T	3-25T	8T@150C/C
BM-5A	200x500	3-16T	3-16T	8T@100C/C	3-16T	3-16T	8T@125C/C
BM-7	200x400	2-16T	3-20T	8T@100C/C	2-16T	3-20T	8T@150C/C
BM-7A	200x500	3-20T	3-20T	8T@100C/C	2-20T	3-20T	8T@150C/C
BM-8	200x600	3-20T +3-16T	3-20T	8T@100C/C	2-20T	3-20T	8T@150C/C
BM-9	200x600	3-25T +3-20T	3-25T	8T@100C/C	2-25T	3-25T +3-20T	8T@150C/C
BM-10	200x600	3-25T +3-20T	3-25T	8T@100C/C	2-25T	3-25T +3-16T	8T@150C/C
BM-11	200x400	2-16T	3-16T	8T@100C/C	2-16T	3-16T	8T@150C/C
BM-12	200x600	3-20T	3-25T	8T@100C/C	3-20T	3-25T +3-16T	8T@150C/C
BM-13,14	200x600	3-25T +3-20T	3-25T	8T@100C/C	2-25T	3-25T +3-20T	8T@150C/C
BM-15,16	200x600	3-25T +3-20T	3-25T	8T@100C/C	2-25T	3-25T +3-16T	8T@150C/C
BM-17	200x600	3-20T +3-16T	3-25T	8T@100C/C	2-20T	3-25T	8T@150C/C
BM-19	200x600	3-20T	3-20T	8T@100C/C	3-20T	3-20T	8T@150C/C
BM-20	200x600	3-20T +3-16T	3-20T	8T@100C/C	2-20T	3-20T	8T@150C/C
BM-21	200x800	3-20T +3-16T	3-20T	8T@100C/C	2-20T	3-20T	8T@150C/C
BM-22,23	400x600	4-25T +4-20T	4-25T	10T@100C/C(4L)	4-25T	4-25T+ 4-20T	10T@150C/C(4L)
BM-24	250x500	2-20T	3-20T	8T@100C/C	2-20T	3-20T	8T@150C/C
BM-25,26	400x800	4-25T +4-20T	4-25T	10T@100C/C(4L)	4-25T	4-25T+ 4-20T	10T@150C/C(4L)

SLAB SCHEDULE

SLAB THK.	SHORT SPAN		LONG SPAN	
	SUPPORT TOP	MID SPAN BOTTOM	SUPPORT TOP	MID SPAN BOTTOM
150	10# @150C/C	10# @200C/C	10# @150C/C	10# @150C/C
125	8# @150C/C	8# @150C/C	8# @150C/C	8# @150C/C

PROJECT
PROPOSED G+12 STOREY AFFORDABLE HOUSING UNDER PRADHAN MANTRI AWAS YOJANA AT MUNICIPAL HOLDING NO. 29, KANAILAL GOSWAMI SARANI (PREVIOUSLY KNOWN AS RAILAND ROAD), UNDER CIRCLE NO. 'F', OF THE SERAMPORE MUNICIPALITY COMPRISED IN L.R. DAG NOS. 2501, 2502, 2503, 2504, 2528, 2573, 2574, 2575, 2576, 2577, 2578, 2579, 2580, 2581, 2582, 2583, 2584, 2585, 2590, 2594, 2596, 2597, 2642, 2643, MOUZA: MAHESH, P.S. SERAMPORE, J.L.: 15, L.R. KHATIAN NO. 11337, P.O. SERAMPORE, PIN: 712201, DISTRICT HOOGHLY, WEST BENGAL.

TITLE
GA. OF TYPICAL FLOOR, FLOOR BEAM & SLAB SCHEDULE (TOWER-4)

- ALL DIMENSIONS ARE IN MM EXCEPT NOTED.
- GRADE OF CONCRETE M40/M30
- GRADE OF STEEL Fe500

EDEN REALTY VENTURES PVT. LTD.
Amrita Sengupta
 Director
CONSTITUTED ATTORNEY OF PYRAMID ENCLAVE (P) LTD.

SIGNATURE OF OWNER
 WE DO HEREBY CERTIFY THAT THE FOUNDATION AND SUPERSTRUCTURE OF THE BUILDING PROPOSED FOR CONSTRUCTION AT MUNICIPAL HOLDING NO.29,K.L.GOSWAMI SARANI, UNDER CIRCLE NO. 'F', OF THE SERAMPORE MUNICIPALITY COMPRISED IN L.R. DAG NOS. 2501, 2502, 2503, 2504, 2528, 2573, 2574, 2575, 2576, 2577, 2578, 2579, 2580, 2581, 2582, 2583, 2584, 2585, 2590, 2594, 2596, 2597, 2642, 2643, MOUZA: MAHESH, P.S. SERAMPORE, J.L.: 15, L.R. KHATIAN NO. 11337, P.O. SERAMPORE, PIN: 712201, DISTRICT HOOGHLY, WEST BENGAL, HAVE BEEN SO DESIGNED BY ME/US WILL MAKE SUCH FOUNDATION AND SUPERSTRUCTURE SAFE IN ALL RESPECT INCLUDING THE CONSIDERATION OF BEARING CAPACITY AND SETTLEMENT OF SOIL ETC.

Malay Kumar Ghosh
 MALAY KUMAR GHOSH
 Regn. No. CA/92/14854
 35A, Dr. Sarat Banerjee Road
 Kolkata - 700 029

SIGNATURE OF ARCHITECT
 MALAY KUMAR GHOSH
 REGN. NO. CA/92/14854
 35A, DR. SARAT BANERJEE ROAD, KOLKATA-700 029
 KMC ENLISTMENT NO.180(A)

Bibek Bikash Mullick
 BIBEK BIKASH MULLICK
 E.S.E. - 1/75
 KOLKATA MUNICIPAL CORPORATION
 Signature of Struc. Reviewer

SIGNATURE OF STRUCTURAL ENGINEER
 BIBEK BIKASH MULLICK

Alok Roy
 ALOK ROY
 Registered Geotechnical Engineer
 Kolkata Municipal Corporation
 Class-4, No.- 617511
 E.S. No. 1/75

SIGNATURE OF GEOTECHNICAL ENGINEER
 GEOTEST ENGINEERS PVT.LTD.
 ALOK ROY
 GTE - 1/11
 6A, MILON PARK, GARIA, KOLKATA-700084.

DESIGNED-BBM REF.
 CHECKED-BBM SCALE : 1:250,1:25
 DEALT - P.P DATE : 03.08.2018
 DRG. NO-PMC/MUN/ST/SERAMPORE/06

STRUCTURAL CONSULTANT
P M CONSULTANT
 35A, DR. SARAT BANERJEE ROAD, KOL.-29
 PHONE- 9830461784,
 e-mail- bibekbm@rediffmail.co

ESPACE
 35-A, DR. SARAT BANERJEE ROAD, KOLKATA-700029
 TeleFax : 91-33-2465-4130 / 4159
 e-mail : espace@vsnl.net
 WEBSITE : www.espaceindia.com

Permit No. 749 2018-19
Permission for the new construction as
proposed and shown in the plan is granted
vide SI No. 1025 and corresponding
H.O.C. Meeting Dt. 23.1.2018
Dated.....Chairman.....

Serampore Municipality

1. This plan is valid for three years and may
be revalidated for the further two years on
payment of necessary charges with production
of original plan allowing with prescribed from.
2. Within one month after the completion of new
construction or a salable portion there of, the
owner must be informed this to the Municipal
Authority for interim assessment on a prescribed
form.

Niranjan Kumar
Technical Advisor & Consulting Engineer
Field, Chief Engineer, M.E. & T.R.
Serampore Municipality

Chandrajit Chakrabarty
Urban Infrastructure Expert
Serampore Municipality

СЕРАМПОРЕ МУНИЦИПАЛИТАТ
ОБ
СОНСТРОЕНЕТО УПЛОТНЕНИЕ

СЕРАМПОРЕ МУНИЦИПАЛИТАТ