



Mohana Commercial Pvt. Ltd.



CIN NO : U51909 WB2004 PTC 100677

ISO 9001 : 2015

Regd. Office

Stall No.-B/37, Mohana Super Market
Haldia Township, Purba Medinipur
www.mohonacommercial.com

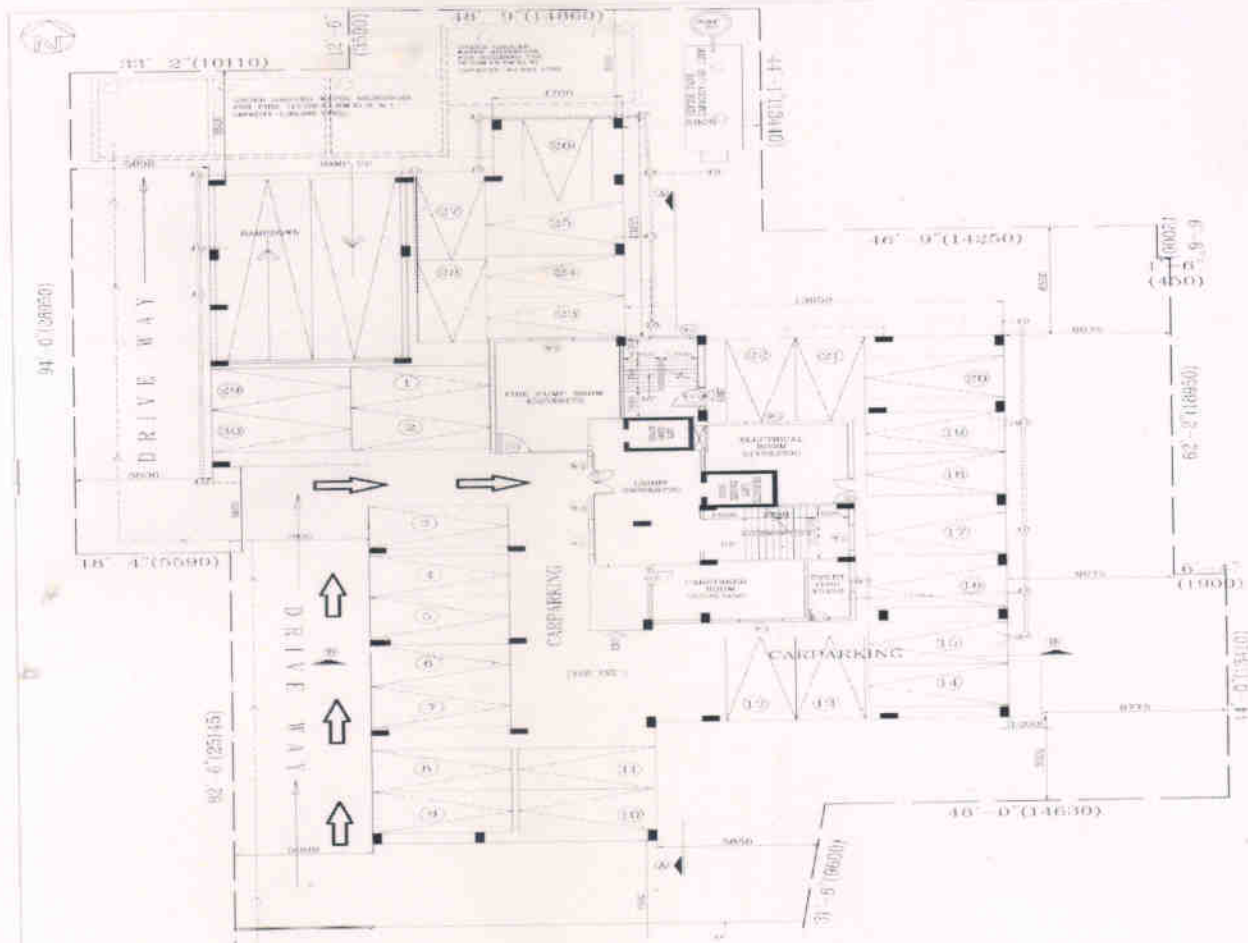
Head Office

The Landmark (1st Floor), Haldia Township,
Dist.-Purba Medinipur, Pin-721607
Ph.: 03224-267333
E-mail : mohonacommercial@gmail.com

Ref. No.:.....

Date : 22.10.2019

CRYSTAL TOWER PARKING
NUMBER OF GARAGE = 28 (GROUND FLOOR COVER PARKING)
AREA OF GARAG = 80 SQFT PER GARAGE, 28*80 = 2240 SQFT



For MOHANA COMMERCIAL PVT. LTD.

Adlikany
Director





Mohana Commercial Pvt. Ltd.



CIN NO : U51909 WB2004 PTC 100677

ISO 9001 : 2015

Head Office

Regd. Office

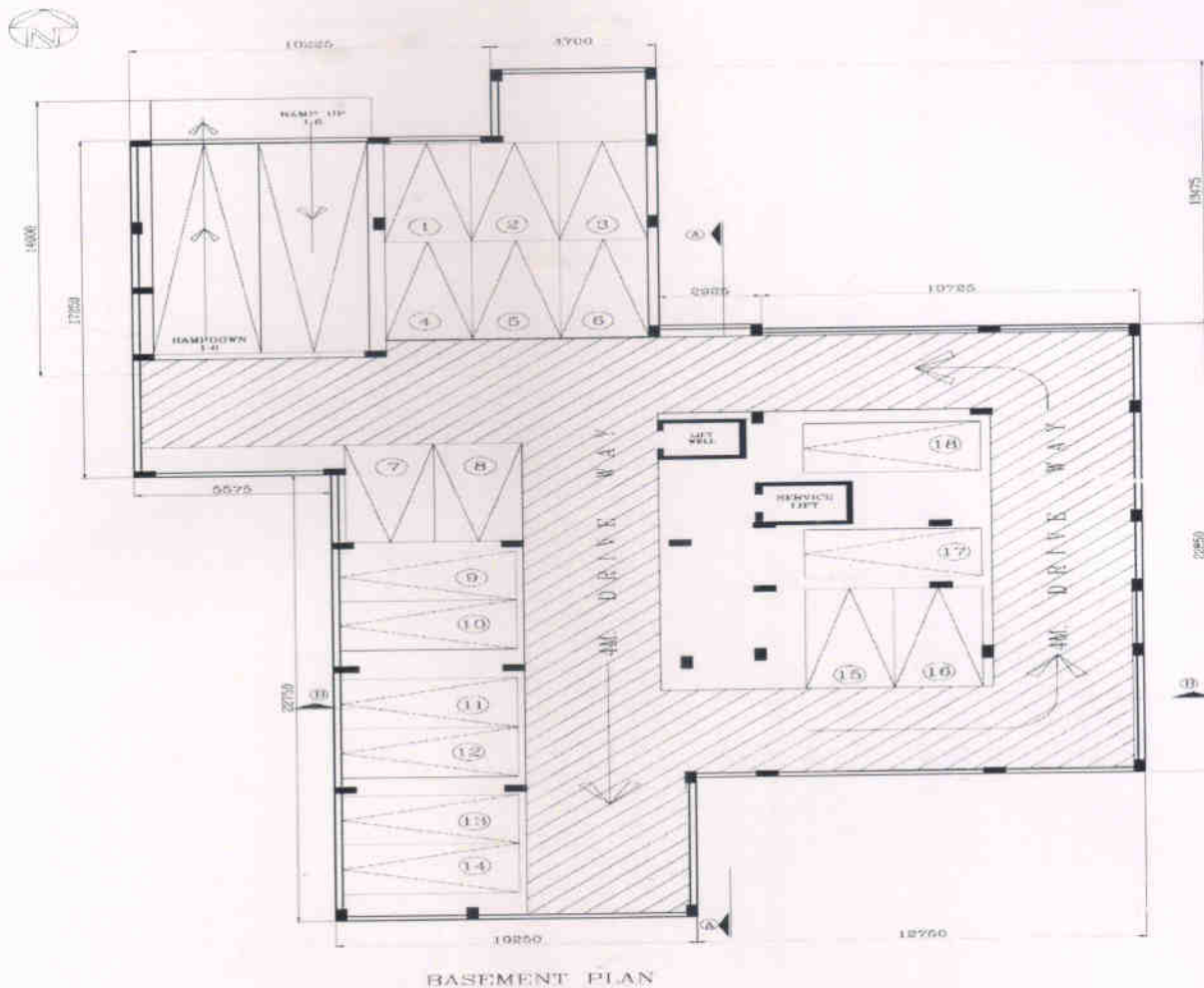
Stall No.-B/37, Mohana Super Market
Haldia Township, Purba Medinipur
www.mohonacommercial.com

The Landmark (1st Floor), Haldia Township,
Dist.-Purba Medinipur, Pin-721607
Ph.: 03224-267333
E-mail : mohanacommercial@gmail.com

Ref. No.:.....

Date : 22.10.2019

CRYSTAL TOWER PARKING
NUMBER OF GARAGE = 18 (BASEMENT COVER PARKING)
AREA OF GARAG = 80 SQFT PER GARAGE, 18*80 = 1440 SQFT



For MOHANA COMMERCIAL PVT. LTD.

Adikyan

Director

